

reducing sleeve

With cooling canal along the location hole

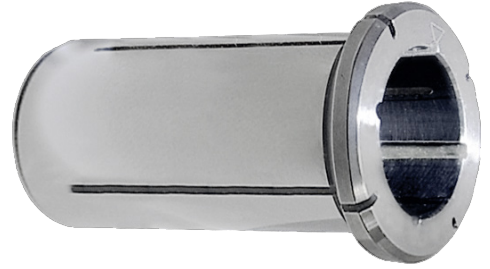
ATORN[®]

Application

For reducing the clamping diameter. For drilling, reaming, milling and tool sharpening.

Version

- Slotted and polished
- Concentricity tolerance $\leq 3\mu\text{m}$
- Concentricity tolerance $\leq 3\mu\text{m}$



Art. No.	23336 602
Chuck clamping diameter	12 mm
Clamping diameter	4 mm
Collar diameter	16 mm
Insertion depth	29 mm
Max. insert depth	40 mm
Length	44 mm
Coolant supply	KKB

EAN-Code

4050293436709