

Euromas Aluminium / Euromas F05

Enclosure, aluminium



A 168

Order no.: 01168000

* = Available on request.

Characteristics

Colour of enclosure group

Grey, similar to RAL 7001

Protection class

IP 66

Enclosure Material

G Al Si 12, PU foamed seal

For details see Technical Information

Scope of delivery

Lid and base, lid screws made of V2A, earthing screw

Note

On the A 198, because of the wall-mounting drill holes inside the sealed lip, expert sealing of the wall-mounting is necessary to achieve protection class IP 66.

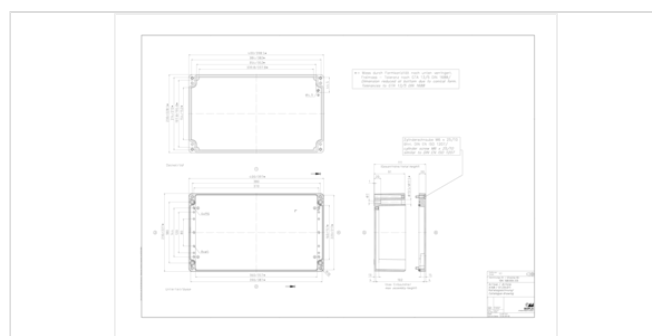
G = design with transparent lid (PC)

Dimensions

Dimensions

400 x 230 x 111 mm

Product drawing



Important!

To compensate for pressure when temperatures change and cause moisture in the enclosure, we recommend that you use a pressure compensation element.

» Additional information

20.02.2020

Technical documentation / Downloads

Technical drawings

3D product data in STEP format: Registration necessary
Product drawing in PDF format: 01168000 A-168.pdf (90.8 KB)
Product drawing in DXF format: 01168000 A-168.dxf (604.3 KB)
Drawing for mechanical processing: 01168000 A-168-G.dxf (324.4 KB)

Milling contours are shown here as a DXF file. (Sub D, USB, HDMI, cable glands, ...)

Works Test Certificates

682 WPZ-Euomas-Aluminium DE.pdf (163.7 KB)
682 WPZ-Euomas-Aluminium EN.pdf (143.7 KB)

Product information

Euomas Aluminium F05 GB.pdf (1.8 MB)

Matching accessories



Mounting panels, galvanised sheet steel

21002400 M For A 168, A 170



Capstan-headed screws, sealable

21007955 KP For A 119, A 122, A 124-125, A 130, A 135-190, A 196-197



Allen cheese-head screw for lid

21007950 IS For A 119, A 122, A 124-125, A 130, A 135, A 140-168, A 170-190



Earthing bars with fitted terminal clamps

21005400 E For A 168, A 170-190, P 340-341, P 3412, P 355



Wall brackets, screw-on at rear

21004300 WL For A 119-198, P 330-355



DIN rails DIN EN 60715 G 32, galvanised steel

21004100 TS 32 For A 168, A 170-190, P 340-341, P 3412, P 355



DIN rails DIN EN 60715 TH 35, galvanised steel

21004110 TS 35

For A 168, A 170-190, P 340-341, P
3412, P 355



Set of hinges

21007800 SCHED