

LISA3CSP-RS-PIN

~15° spot beam

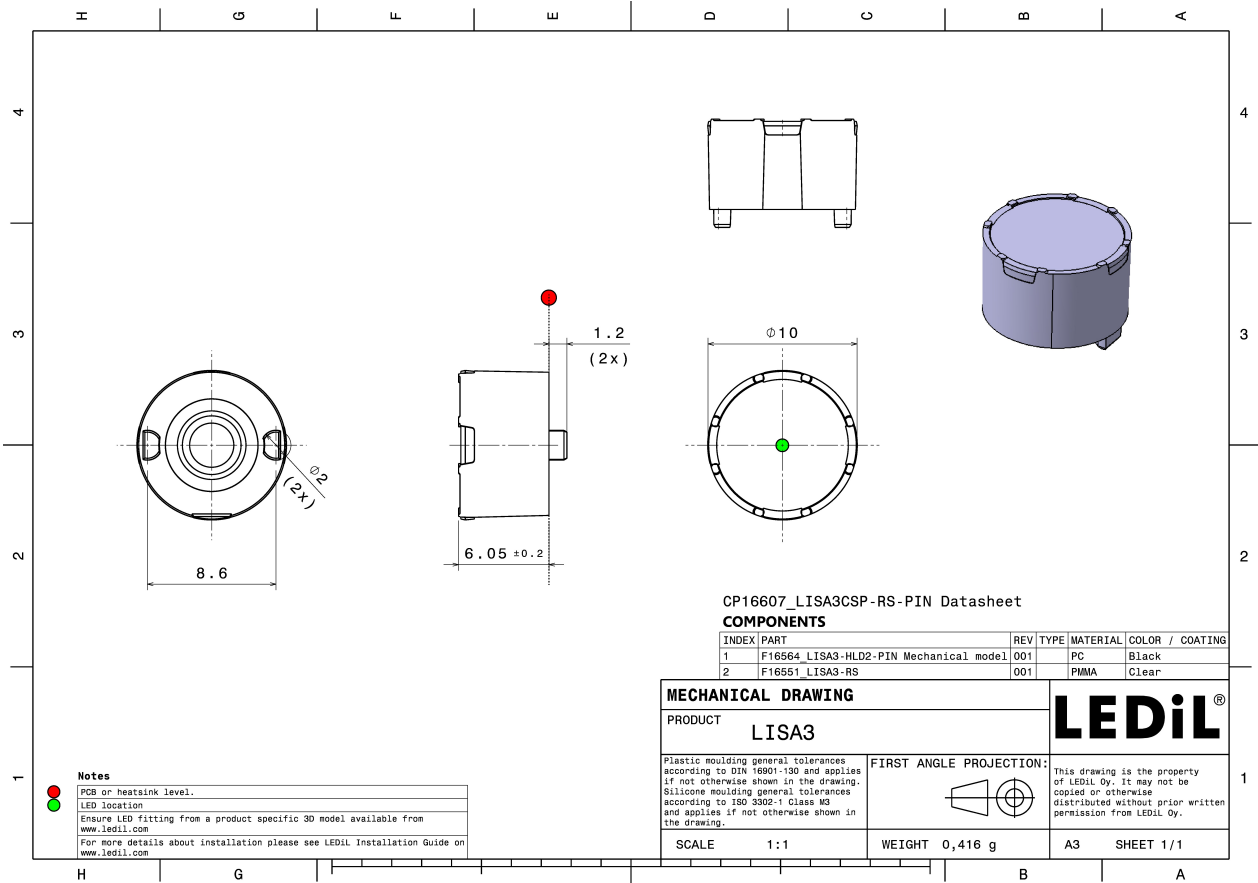
TECHNICAL SPECIFICATIONS:

Dimensions	Ø 10.0 mm
Height	7.2 mm
Fastening	glue
Colour	black
Box size	310 x 230 x 60 mm
Box weight	1.2 kg
Quantity in Box	2000 pcs
ROHS compliant	yes ⓘ



MATERIAL SPECIFICATIONS:

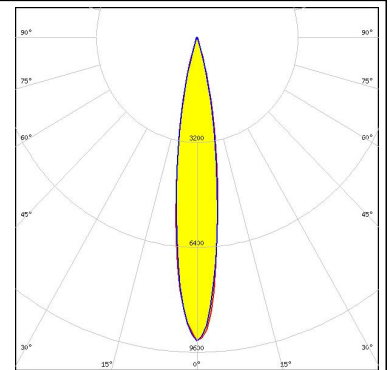
Component	Type	Material	Colour
LISA3-RS	Single lens	PMMA	
LISA3-HLD2-PIN	Holder	PC	



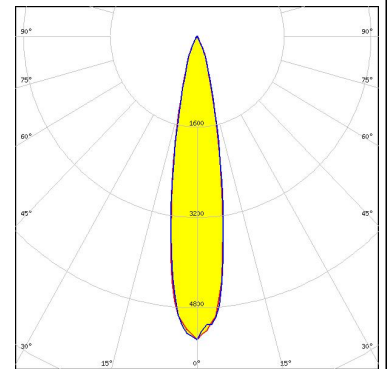
PHOTOMETRIC DATA (SIMULATED):



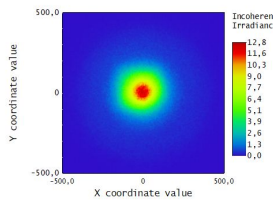
LED NCSxE17A
 FWHM 15.0°
 Efficiency 87 %
 Peak intensity 8.100 cd/lm
 LEDs/each optic 1
 Light colour White
 Required components:



LED NVSxE21A
 FWHM 20.0°
 Efficiency 90 %
 Peak intensity 5.430 cd/lm
 LEDs/each optic 1
 Light colour White
 Required components:



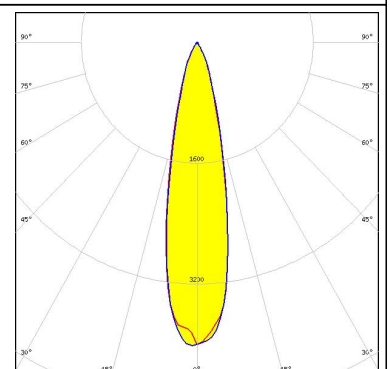
LED SFH 4710S
 FWHM 16.0°
 Efficiency 76 %
 Peak intensity cd/lm
 LEDs/each optic 1
 Light colour White
 Required components:



Detector Stage: Incoherent Irradiance
 Zemax OpticStudio 11.4 SP1
 Configuration 1 of 1



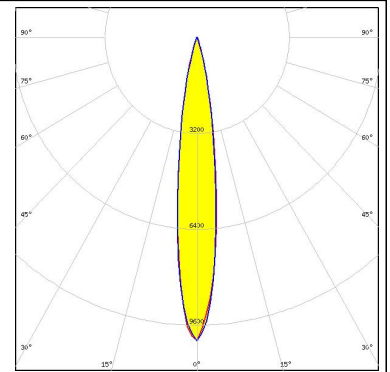
LED LH181B
 FWHM 22.0°
 Efficiency 89 %
 Peak intensity 4.170 cd/lm
 LEDs/each optic 1
 Light colour White
 Required components:



PHOTOMETRIC DATA (SIMULATED):

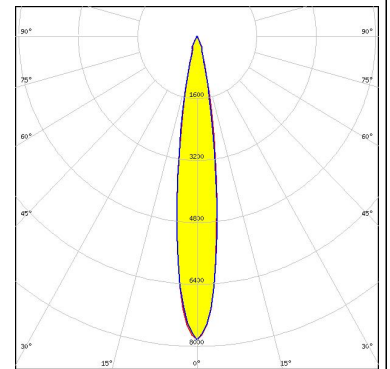
SAMSUNG

LED LM101B
 FWHM 14.0°
 Efficiency 89 %
 Peak intensity 8.830 cd/lm
 LEDs/each optic 1
 Light colour White
 Required components:



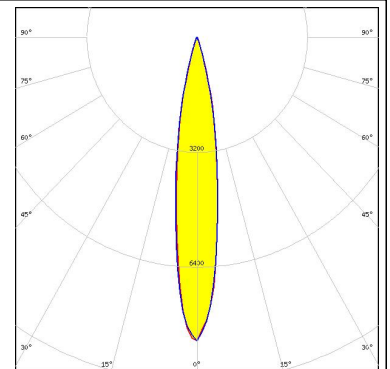
SEOUL SEMICONDUCTOR

LED Z8Y11
 FWHM 16.0°
 Efficiency 81 %
 Peak intensity 7.900 cd/lm
 LEDs/each optic 1
 Light colour White
 Required components:



SEOUL SEMICONDUCTOR

LED Z8Y15
 FWHM 15.5°
 Efficiency 86 %
 Peak intensity 7.210 cd/lm
 LEDs/each optic 1
 Light colour White
 Required components:



GENERAL INFORMATION:

NOTE: The typical beam angle will be changed by different color, chip size and chip position tolerance. The typical total beam angle is the full angle measured where the luminous intensity is half of the peak value.

MATERIALS:

As part of our continuous research and improvement processes, and to ensure the best possible quality and availability of our products, LEDiL reserves the right to change material grades without notice.

PRODUCT DATA USER AGREEMENT AND DISCLAIMER:

The measured data in the provided downloadable LEDiL Product Datasheets and Mechanical 2D-Drawings is rounded and provided as reference for planning. LEDiL Oy's optical specifications have been verified by conducting performance testing of the products in accordance with the company's quality system. The reported data are averaged results of multiple measurements with typical variation. LEDiL Oy reserves the right to without prior notification make changes and improvements to its products.

LEDiL Oy assumes neither warranty, nor guarantee nor any other liability of any kind for the contents and correctness of the provided data. The provided data has been generated with highest diligence but the provided data may in reality not represent the complete possible variation range of all intrinsic parameters. Therefore, in certain cases a deviation from the provided data could occur.

LEDiL Oy reserves the right to undertake technical changes of its products without further notification which could lead to changes in the provided data. LEDiL Oy assumes no liability of any kind for the possible deviation from any provided data or any other damage resulting from the usage of the provided data.

The user agrees to this disclaimer and user agreement with the download or usage of the provided files.

LEDiL Oy

Joensuunkatu 13
FI-24240 SALO
Finland

LEDiL Inc.

228 West Page Street
Suite D
Sycamore IL 60178
USA

Local sales and technical support

[www.ledil.com/
where_to_buy](http://www.ledil.com/where_to_buy)

Shipping locations

Salo, Finland
Hong Kong, China

Distribution Partners

[www.ledil.com/
where_to_buy](http://www.ledil.com/where_to_buy)