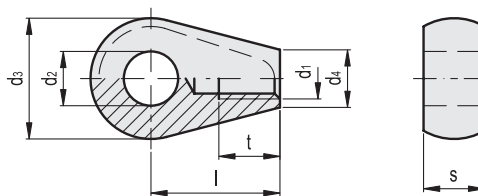


MATERIAL

Black-oxide steel, class 5.8 (tensile strength 500 N/mm²).

FEATURES AND APPLICATIONS

GN 444.2 eye nuts can be used together with threaded studs of different lengths. They are used mainly for moulds, connections, equipment, etc.



Code	Description	d1	d2 H7	d3-0.3	d4	l	s-0.15	tmin	⚖️
GN.12704	GN 444.2-M6-8	M6	8	18	8.5	19	9	9	18
GN.12706	GN 444.2-M8-10	M8	10	20	11	24	12	11	30
GN.12708	GN 444.2-M10-12	M10	12	25	13.5	28	14	14	52
GN.12710	GN 444.2-M12-16	M12	16	32	16	34	17	16	110

- 1
- 2
- 3
- 4
- 5
- 6
- 7
- 8
- 9
- 10
- 11
- 12
- 13
- 14
- 15
- 16
- 17
- 18