
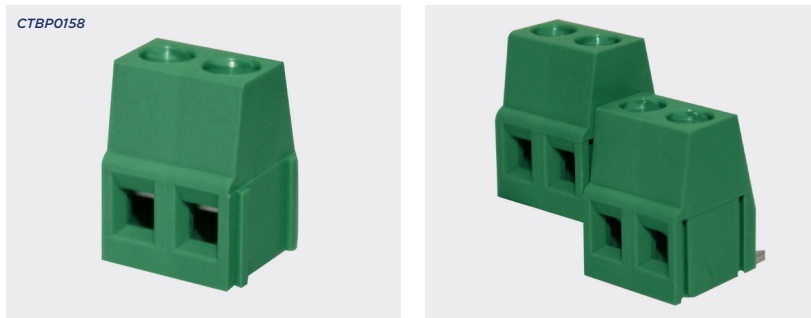


5.08mm pitch standard profile 90° rising clamp terminal blocks

Product overview

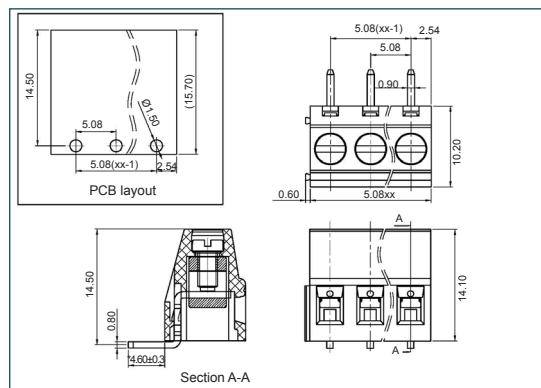
- 2 and 3 pole double interlocking mechanism for increased strength
- Moulded in green UL94-V0 flame retardant PA
- 90° mounting
- Cable acceptance - 0.3-3.31mm² (22-12AWG)
- Professional rising clamp terminals
- Guided pin alignment
- Captive screws
-  approved

CTBP0158



SPECIFICATION	
Rating	16A / 300V
Insulation resistance	500MΩ / 500V
Withstand voltage	AC1600V / 1min
Contact resistance	20mΩ (max)
Working temperature	-40°C to +105°C
Moulding	UL94-V0 flame retardant PA
Pin/terminal	Tin plated brass
Rising clamp	Nickel plated brass
Screw/torque	M2.5 steel, zinc plated / 0.4Nm
Recommended PCB hole size	Ø1.5mm

PART NO.	POLES	LENGTH
CTBP0158/2	2	10.16mm
CTBP0158/3	3	15.24mm
CTBP0158/4	4	20.32mm
CTBP0158/5	5	25.4mm
CTBP0158/6	6	30.48mm
CTBP0158/7	7	35.56mm
CTBP0158/8	8	40.64mm
CTBP0158/9	9	45.72mm
CTBP0158/10	10	50.8mm
CTBP0158/11	11	55.88mm
CTBP0158/12	12	60.96mm



KEY FEATURES

Standard profile | Double interlock mechanism | Rising clamp terminals



081

TERMINAL STRIPS

095

WIRE TO BOARD
CONNECTORS

100

CIRCULAR
CONNECTORS

151

IP68 CONNECTORS

158

INTERFACE
MODULES AND
RELAY BASES