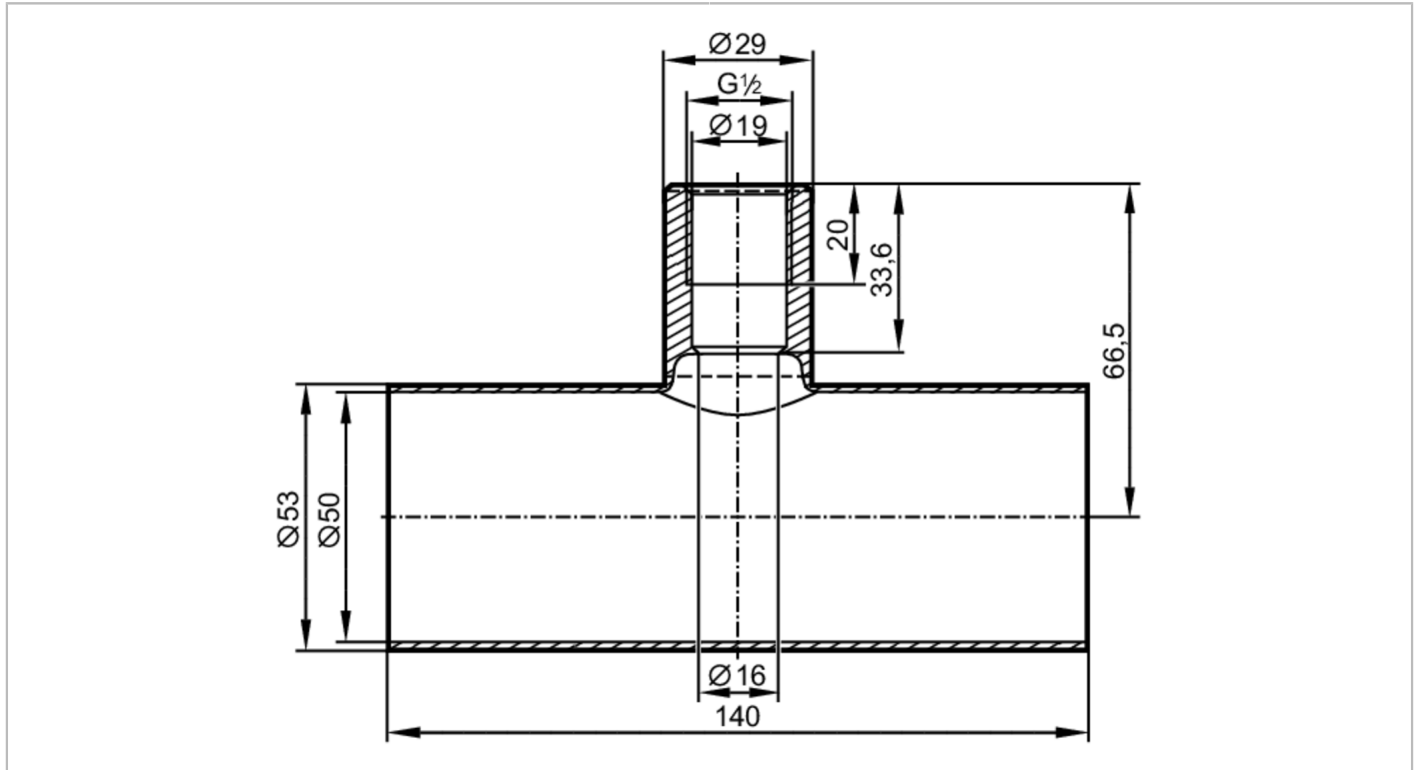


# E43318



## T-piece

T-PIPE/G1/2/L140/DN50



EC 1935/2004 EHEDG Certified **FCM**

| Application                                       |  |
|---|--|
| Design  | for sensors and adapters with process connection G 1/2 A |
| Pressure rating [bar]                             | 20   |
| Mechanical data                                   |  |
| Weight [g]  | 667.5  |
| Materials   | stainless steel (1.4404 / 316L)                          |
| Surface characteristics Ra/Rz of the wetted parts | 0.8 / 4  |
| Accessories                                       |  |
| Accessories (supplied)                            | O-rings: 1, FKM  |
| Remarks   |  |
| Pack quantity                                     | 1 pcs.   |