

Gehäuseunterteil grau,  
Deckel gelb,  
Isoschwenkgriff  
rot GRX  
Enclosure base grey,  
Cover yellow,  
Plastic swivel handle  
red GRX



IP 44

Einstellbereiche  
Setting ranges

isogekapselt mit Einschlossverriegelung und CEE-Gerätestecker 5-polig, 16 A, 400 V  
in plastic enclosure with interlocking for 1 padlock and CEE plug 5 poles, 16 A, 400 V

**Thermische Auslösung**  
Thermal releases

**Thermische und magnetische Schnellauslösung**  
Thermal and magnetic instantaneous tripping mechanism

A

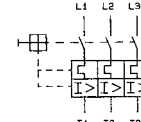
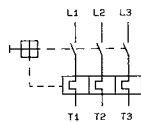
Typ Type

Best.-Nr. Ref. No.

Typ Type

Best.-Nr. Ref. No.

⊕ (3P+N+⊕)



0,3 – 0,45	CGEM/HS 516/6h-CT8/2-SE-GRX/0,45	154 533	CGEM/KA/HS 516/6h-CT8/2-SE-GRX/0,45	154 541
0,4 – 0,6	CGEM/HS 516/6h-CT8/2-SE-GRX/0,6	154 534	CGEM/KA/HS 516/6h-CT8/2-SE-GRX/0,6	154 542
0,54 – 0,9	CGEM/HS 516/6h-CT8/2-SE-GRX/0,9	154 535	CGEM/KA/HS 516/6h-CT8/2-SE-GRX/0,9	154 543
0,85 – 1,35	CGEM/HS 516/6h-CT8/2-SE-GRX/1,35	149 535	CGEM/KA/HS 516/6h-CT8/2-SE-GRX/1,35	154 544
1,3 – 2,0	CGEM/HS 516/6h-CT8/2-SE-GRX/2,0	149 494	CGEM/KA/HS 516/6h-CT8/2-SE-GRX/2,0	154 545
1,8 – 3,0	CGEM/HS 516/6h-CT8/2-SE-GRX/3,0	149 476	CGEM/KA/HS 516/6h-CT8/2-SE-GRX/3,0	149 501
2,8 – 4,6	CGEM/HS 516/6h-CT8/2-SE-GRX/4,6	149 477	CGEM/KA/HS 516/6h-CT8/2-SE-GRX/4,6	154 546
4,2 – 6,7	CGEM/HS 516/6h-CT8/2-SE-GRX/6,7	149 421	CGEM/KA/HS 516/6h-CT8/2-SE-GRX/6,7	154 547
6,5 – 10,0	CGEM/HS 516/6h-CT8/2-SE-GRX/10	149 336	CGEM/KA/HS 516/6h-CT8/2-SE-GRX/10	149 330
10,0 – 16,0	CGEM/HS 516/6h-CT8/2-SE-GRX/16	149 534	CGEM/KA/HS 516/6h-CT8/2-SE-GRX/16	149 327

⊕ (3P+N+⊕)

Einstellbereiche  
Setting ranges

isogekapselt mit Einschlossverriegelung und CEE-Gerätestecker 5-polig, 16 A, 400 V  
in plastic enclosure with interlocking for 1 padlock and CEE plug 5 poles, 16 A, 400 V

**Thermische und Unterspannungsauslösung,**  
**Spulenspannung 400 V, 50 Hz**  
Thermal and undervoltage releases,  
coil voltage 400 V, 50 Hz

**Thermische und magnetische Schnellauslösung und**  
**Unterspannungsauslösung, Spulenspannung 400 V, 50 Hz**  
Thermal and magnetic instantaneous tripping mechanism  
and undervoltage release, coil voltage 400 V, 50 Hz

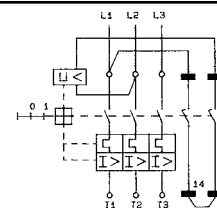
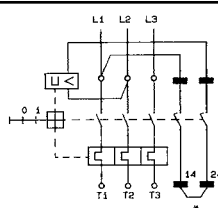
A

Typ Type

Best.-Nr. Ref. No.

Typ Type

Best.-Nr. Ref. No.



0,3 – 0,45	CGEM 013/HS 516/6h-CT8/2-SE-GRX/0,45	154 537	CGEM 013/KA/HS 516/6h-CT8/2-SE-GRX/0,45	154 549
0,4 – 0,6	CGEM 013/HS 516/6h-CT8/2-SE-GRX/0,6	149 407	CGEM 013/KA/HS 516/6h-CT8/2-SE-GRX/0,6	154 550
0,54 – 0,9	CGEM 013/HS 516/6h-CT8/2-SE-GRX/0,9	154 538	CGEM 013/KA/HS 516/6h-CT8/2-SE-GRX/0,9	154 551
0,85 – 1,35	CGEM 013/HS 516/6h-CT8/2-SE-GRX/1,35	154 539	CGEM 013/KA/HS 516/6h-CT8/2-SE-GRX/1,35	149 448
1,3 – 2,0	CGEM 013/HS 516/6h-CT8/2-SE-GRX/2,0	149 434	CGEM 013/KA/HS 516/6h-CT8/2-SE-GRX/2,0	154 552
1,8 – 3,0	CGEM 013/HS 516/6h-CT8/2-SE-GRX/3,0	149 459	CGEM 013/KA/HS 516/6h-CT8/2-SE-GRX/3,0	149 491
2,8 – 4,6	CGEM 013/HS 516/6h-CT8/2-SE-GRX/4,6	149 386	CGEM 013/KA/HS 516/6h-CT8/2-SE-GRX/4,6	149 332
4,2 – 6,7	CGEM 013/HS 516/6h-CT8/2-SE-GRX/6,7	149 419	CGEM 013/KA/HS 516/6h-CT8/2-SE-GRX/6,7	149 415
6,5 – 10,0	CGEM 013/HS 516/6h-CT8/2-SE-GRX/10	149 322	CGEM 013/KA/HS 516/6h-CT8/2-SE-GRX/10	149 318
10,0 – 16,0	CGEM 013/HS 516/6h-CT8/2-SE-GRX/16	149 335	CGEM 013/KA/HS 516/6h-CT8/2-SE-GRX/16	149 464