



PRODUKTINFORMATION

Vi reserverar oss mot fel samt förbehåller oss rätten till ändringar utan föregående meddelande

ELFA artikelnr

35-679-55 Membrantangentbord 1x4 CCM4TR

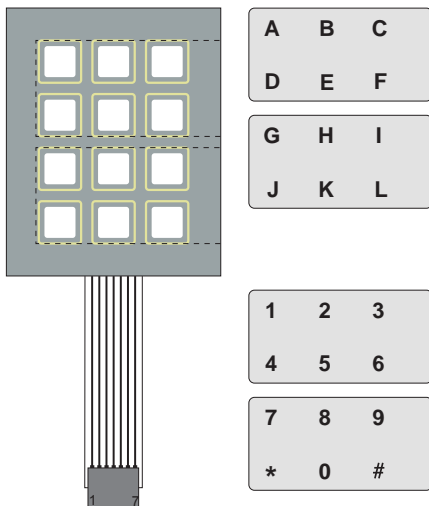
35-679-71 Membrantangentbord 3x4 CCM12TR



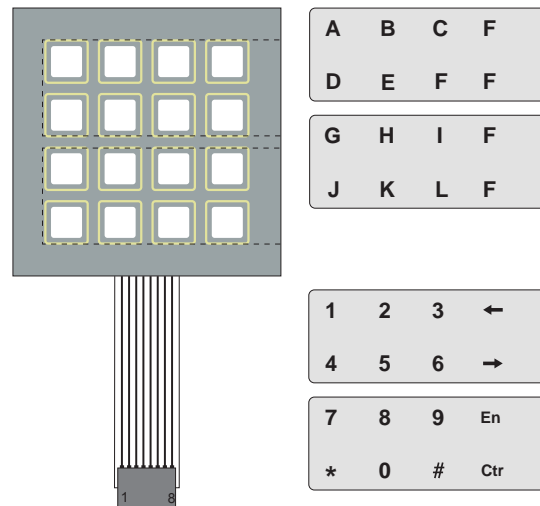
A P E M

Standard keyboards 4, 12 & 16 keys

Ref:CCM 12 TR



Ref:CCM 16 TR



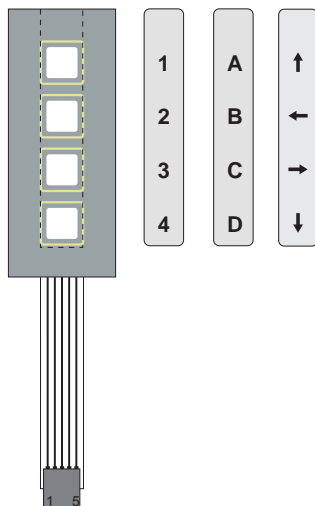
General specification

Tactile keyboard with changeable legends
 Graphics overlay and labels in polyester 150µ
 Graphics overlay screen printed with 2 colours
 Labels screen printed with 2 colours
 Output with flexible tail
 With a female connector pitch 2.54 mm

Mechanical specification

Contact force 250 gr +/- 20%
 Contact travel 0,42 mm +/- 15%
 Type of contact Inox domes + silver ink
 Operations 1 000 000

Ref:CCM 4 TR



Electrical specification

Nominal operating voltage 24 V
 Maximum operating voltage 50 V
 Minimum operating voltage 1 V
 Maximum intensity 30 mA
 Maximum switchable power 500 m W
 Contact circuit resistance(typical) 1 ohm/cm (tracks 1mm width)
 Dielectric strength 250 V
 Insulation resistance at 100 V 100 Mohms
 Maximum contact bounce 5 ms sous 5 V
 Compatibility with TTL & MOS circuits
 ESD shielding Level 3

Climatic specification

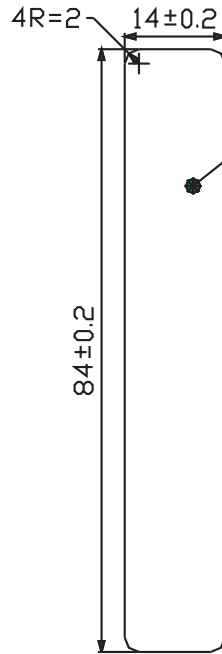
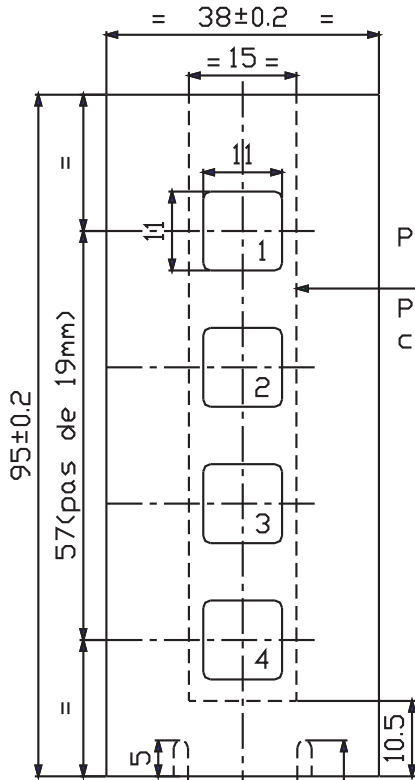
Operating temperature -25° à + 65° C
 Storage temperature -30° à + 85° C

Version du 27/05/2002

Unité Claviers

Production : Route d'Ardus - 82000 Montauban - Tel: +33 (0)5 63 91 78 00 - Fax: +33 (0)5 63 91 78 01
 Information : Tel : +33 (0)5 63 93 14 98 - Fax: +33 (0)5 63 93 19 03

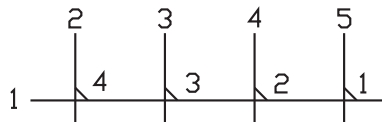
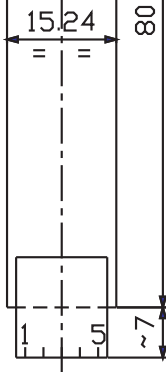
TOLERANCES GENERALES NON CUMULABLES	DECOUPE	SERIGRAPHIE	DEFORMATION/SERIG.	HAUTEUR DEFORMATION	LARGEUR DEFORMATION
	±0.2	±0.2	±0.3	POLYESTER 0.1 ^{+0.2} / ₀	POLYCARBONATE 0.3 ^{+0.3} / ₀

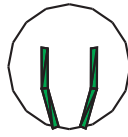


ETIQUETTE SERIGRAPHIEE
POLYESTER 150 Microns
Silk screen printed label
Polyester 150 μ

CLAVIER PLAT AVEC EFFET TACTILE PAR COUPELLES
METAL.10x10 (type CCM)
MATIERE FACE AVANT POLYESTER 150 Microns
MATIERE ADHESIF ARRIERE DS397
CONNECTEUR CRIMPFLEX FEMELLE 5 Pts
AU PAS DE 2.54mm (REF: E200F05)
CLAVIER RELEGENDBLE PAR LE HAUT

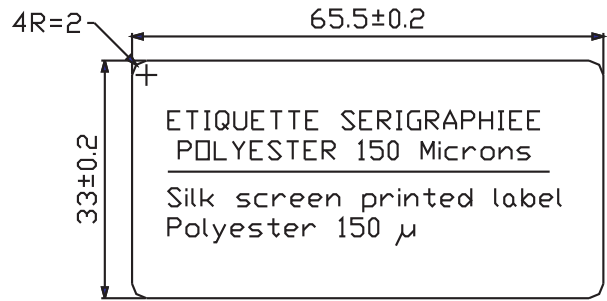
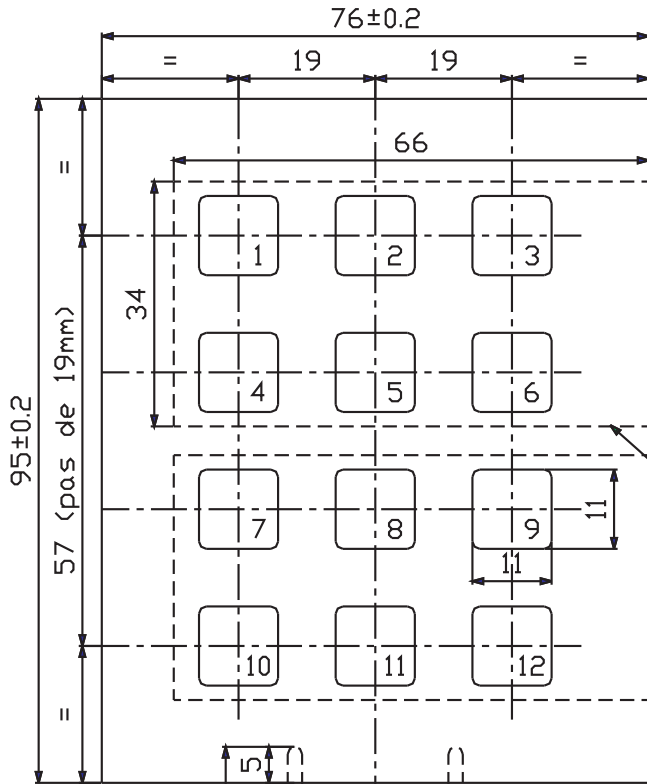
Flexible membrane keyboard with tactile effect
by metal domes 10x10 (CCM TYPE)
Front face of polyester 150μ
Rear side adhesive : DS397
Crimflex female connector 5 pins pitch 2.54mm (REF:E200F05)
Keyboard with changeable legend from the top



				Matiere	 APEM Unité Claviers Route d'ardus - 82000 Montauban Tél: 05 63 91 78 00 - Fax: 05 63 91 78 01	Dessine: KORMANN.M
				Traitement		Date: 04/10/95
				Protection		Verifie:
				Ech: 1/1		Ref.Plan 4T-STDR
A	CREATION	04.10 95	KM	PLAN DE REFERENCE DU CLAVIER "4 TOUCHES STANDARD"		Cde Art. CCM4 TR
Rep.	Modifications	Date	Visa			

Ce plan est la propriété de APEM. Il ne peut être reproduit ou communiqué sans autorisation écrite. Loi du 11 Mars 1902.

TOLERANCES GENERALES NON CUMULABLES	DECOUPE	SERIGRAPHIE	DEFORMATION/SERIG.	HAUTEUR DEFORMATION		LARGEUR DEFORMATION
	±0.2	±0.2	±0.3	POLYESTER 0.1 ^{+0.2} ₀	POLYCARBONATE 0.3 ^{+0.3} ₀	0.95mm Mini



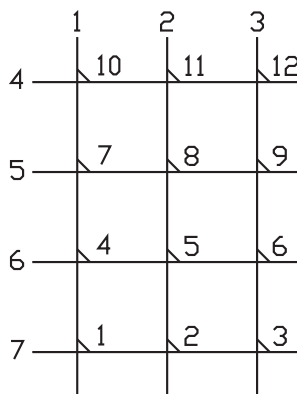
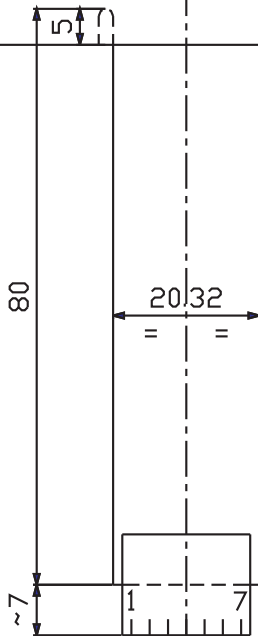
PASSAGES ETIQUETTES RELEGENDABLES
Place to insert changeable legends


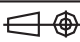
CLAVIER PLAT AVEC EFFET TACTILE PAR COUPELLES METAL.10x10 (type CCM)
MATIERE FACE AVANT POLYESTER 150 Microns
MATIERE ADHESIF ARRIERE DS397
CONNECTEUR CRIMPFLEX FEMELLE 7 Pts AU PAS DE 2.54mm (REF: E200F07)
CLAVIER RELEGENDABLE PAR LE COTE DROIT

Flexible membrane keyboard with tactile effect by metal domes 10x10 (CCM TYPE)
Front face of polyester 150μ
Rear side adhesive : DS397

Crimpflex female connector 7 pins pitch 2.54mm (REF:E200F07)

Keyboard with changeable legend from the right border



				Matiere	 APEM Unité Claviers	Dessine: KORMANN.M
				Traitement		Date: 04/10/95
				Protection		Verifie:
				Ech: 1/1		Ref.Plan 12T-STDR
					Route d'ardus - 82000 Montauban Tél: 05 63 91 78 00 - Fax: 05 63 91 78 01	Cde Art. CCM12 TR
A	CREATION	04.10 95	KM	PLAN DE REFERENCE DU CLAVIER "12 TOUCHES STANDARD"		
Rep.	Modifications	Date	Visa			

Ce plan est la propriété de A P E M. Il ne peut être reproduit ou communiqué sans autorisation écrite. Loi du 11 Mars 1902.