

# PRODUCT DATASHEET

## HE 14 W/840

LUMILUX T5 HE | Tubular fluorescent lamps 16 mm, high efficiency, with G5 base



---

### AREAS OF APPLICATION

- Public buildings
- Offices
- Shops
- Supermarkets and department stores
- Industry
- Outdoor applications only in suitable luminaires

---

### PRODUCT BENEFITS

- Good economy and efficiency
- Up to 20 % more economical than LUMILUX T8
- Up to 50 % smaller volume than comparable T8 lamps

---

### PRODUCT FEATURES

- Luminous efficacy: up to 104 lm/W
- Very good lumen maintenance: 90 % throughout the service lifetime of the lamp
- Long average lifetime: up to 24,000 h (with QUICKTRONIC ECG)
- Good color rendering group: 1B ( $R_a$ : 80...89)
- Dimmable



**TECHNICAL DATA**

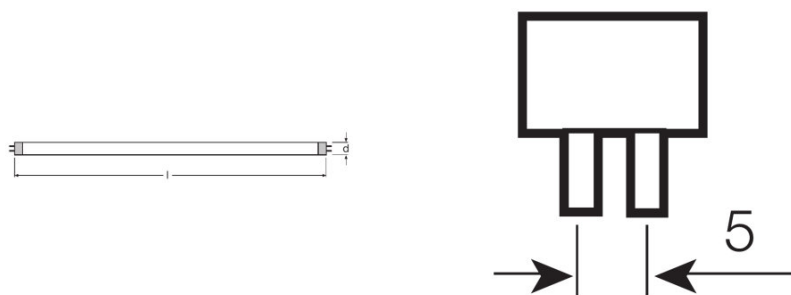
Electrical data

Nominal voltage	220 V
Rated lamp efficacy (HF data 25 °C)	86 lm/W
Rated wattage	14.00 W
Nominal wattage	14.00 W

Photometrical data

Color rendering index Ra	≥80
Rated luminous flux	1200 lm
Luminous flux at 25 °C	1200 lm
Luminous flux at 35 °C	1350 lm
Light color	840
Rated color temperature	4000 K
Nominal luminous flux	1200 lm
Light color (designation)	LUMILUX Cool White
Rated LLMF at 2,000 h	0.95
Rated LLMF at 4,000 h	0.93
Rated LLMF at 6,000 h	0.92
Rated LLMF at 8,000 h	0.90
Rated LLMF at 12,000 h	0.90
Rated LLMF at 16,000 h	0.90
Rated LLMF at 20,000 h	0.89
Color temperature	4000 K
Luminous flux	1200 lm
Color rendering index Ra	≥80

Dimensions & weight



Tube diameter	16 mm
---------------	-------

<b>Length</b>	549.0 mm
<b>Length with base excl. base pins/connection</b>	549.00 mm
<b>Diameter</b>	16.0 mm
<b>Maximum diameter</b>	16.0 mm

### Temperatures & operating conditions

<b>Rated ambient temp.w.max.luminous flux</b>	35.0 °C
---	---------

### Lifespan

<b>Service life</b>	19000 h <sup>1)</sup>
<b>Lifespan</b>	24000 h <sup>1)</sup>
<b>Rated lamp survival factor at 2,000 h</b>	0.99
<b>Rated lamp survival factor at 4,000 h</b>	0.99
<b>Rated lamp survival factor at 6,000 h</b>	0.99
<b>Rated lamp survival factor at 8,000 h</b>	0.99
<b>Rated lamp survival factor at 12,000 h</b>	0.99
<b>Rated lamp survival factor at 16,000 h</b>	0.97
<b>Rated lamp survival factor at 20,000 h</b>	0.85
<b>Operation mode LLMF/LSF</b>	HF
<b>Rated lamp life time</b>	24000 h
<b>Nominal lamp life time</b>	24000 h

<sup>1)</sup> With preheat ECG

### Additional product data

<b>Base (standard designation)</b>	G5
<b>Mercury content</b>	1.9 mg
<b>Show WEEE picto</b>	Yes
<b>Product remark</b>	Suitable for ECG operation only/Lamp designed for internal luminaire temperatures of 30...40 °C; optimum luminous flux achieved at 35 °C

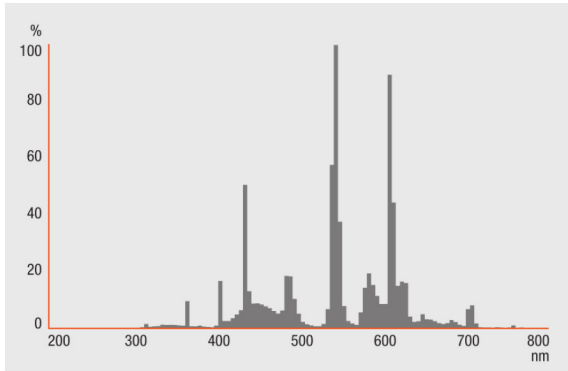
### Capabilities

<b>Dimmable</b>	Yes
<b>Suitable for indoor</b>	Yes

### Certificates & standards

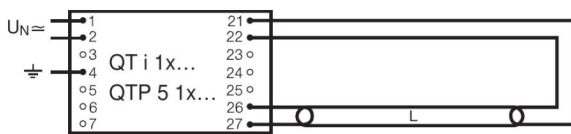
<b>Energy efficiency class</b>	A+
<b>Energy consumption</b>	16 kWh/1000h

Light Distribution

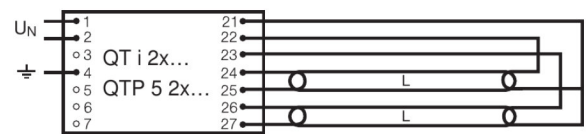


Spectral power distribution

Wiring Diagram



Wiring diagram



Wiring diagram

**SYSTEM GUARANTEE**

OSRAM System+ Guarantee in combination with OSRAM ECGs

**SAFETY ADVICE**

In case of lamp breakage: [www.ledvance.com/brokenlamp](http://www.ledvance.com/brokenlamp)

**LOGISTICAL DATA**

Product code	Packaging unit (Pieces/Unit)	Dimensions (length x width x height)	Gross weight	Volume
4008321916013	Sleeves 1	610 mm x 17 mm x 46 mm	74.00 g	0.48 dm <sup>3</sup>
4008321912152	Shipping carton box 10	633 mm x 46 mm x 232 mm	959.00 g	6.76 dm <sup>3</sup>
4050300464688	Unpacked 1	558 mm x 15 mm x 16 mm	46.67 g	0.13 dm <sup>3</sup>
4050300464695	Shipping carton box 40	598 mm x 95 mm x 198 mm	2580.00 g	11.25 dm <sup>3</sup>
4050300591384	Sleeves 1	570 mm x 20 mm x 23 mm	69.00 g	0.26 dm <sup>3</sup>
4050300591391	Shipping carton box 20	587 mm x 90 mm x 129 mm	1503.00 g	6.82 dm <sup>3</sup>

- The mentioned product code describes the smallest quantity unit which can be ordered. One shipping unit can contain one or more single products. When placing an order, for the quantity please enter single or multiples of a shipping unit.

**REFERENCES / LINKS**

For more information on the system guarantee and the terms and conditions of the guarantee visit

▶ [www.ledvance.com/system-guarantee](http://www.ledvance.com/system-guarantee)

**DISCLAIMER**

Subject to change without notice. Errors and omission excepted. Always make sure to use the most recent release.

## LUMILUX T5 HE | Tubular fluorescent lamps 16 mm, high efficiency, with G5 base

Product name	Product name ECG	EAN	Nominal current	Nominal wattage + Power loss	Luminous flux at 35 °C	Number of lighting outlets	EEL – Energy Label
HE 14 W/840	QT-ECO 1x4-16/220-240 L	4050300660370	0.10 A	15.00 W	1150 lm	1	A2
	QT-ECO 1x4-16/220-240 S	4050300638584	0.10 A	15.00 W	1150 lm	1	A2
	QT-FIT 5 1x14-35	4008321971234	0.08 A	16.00 W	1200 lm	1	
	QT-FIT 5 2x14-35	4008321971258	0.14 A	32.00 W	1200 lm	2	
	QT-FIT 5 3x14, 4x14	4008321971210	0.28 A	63.00 W	1200 lm	4	
	QTi 1x14/24/21/39 GII	4008321383334	0.08 A	16.00 W	1200 lm	1	
	QTi 1x14/24 DIM	4050300870922	0.07 A	15.40 W	1200 lm	1	
	QTi 1x28/54/35/49 GII	4008321383358	0.08 A	16.00 W	1275 lm	1	
	QTi 1x35/49/80 GII	4008321383372	0.08 A	16.00 W	1275 lm	1	
	QTi 2x14/24/21/39 GII	4008321383396	0.15 A	31.00 W	1200 lm	2	
	QTi 2x14/24 DIM	4050300870946	0.14 A	30.60 W	1200 lm	2	
	QTi 2x28/54/35/49 GII	4008321383419	0.15 A	32.00 W	1275 lm	2	
	QTi 2x35/49/80 GII	4008321658951	0.18 A	34.00 W	1250 lm	2	
	QTi 3x14/24 DIM	4008321069719	0.20 A	45.30 W	1200 lm	3	
	QTi 4x14/24 DIM	4008321069993	0.27 A	60.40 W	1200 lm	4	
	QTi DALI 1x14/24 DIM	4050300870380	0.07 A	15.40 W	1200 lm	1	
	QTi DALI 2x14/24 DIM	4050300870861	0.14 A	30.60 W	1200 lm	2	
	QTi DALI 3x14/24 DIM	4008321069955	0.20 A	45.30 W	1200 lm	3	
	QTi DALI 4x14/24 DIM	4008321070036	0.27 A	60.40 W	1200 lm	4	
	QTP5 1x14-35	4008321329035	0.08 A	16.00 W	1200 lm	1	
	QTP5 2x14-35	4008321329073	0.14 A	30.00 W	1200 lm	2	
	QTP5 3x14, 4x14	4008321484598	0.28 A	48.00 W	1350 lm	3	
	QTP5 3x14, 4x14	4008321484598	0.22 A	63.00 W	1350 lm	4	

Product name	Product name ECG	EAN	Luminous flux at 25 °C
HE 14 W/840	QT-ECO 1x4-16/220-240 L	4050300660370	
	QT-ECO 1x4-16/220-240 S	4050300638584	
	QT-FIT 5 1x14-35	4008321971234	
	QT-FIT 5 2x14-35	4008321971258	
	QT-FIT 5 3x14, 4x14	4008321971210	
	QTi 1x14/24/21/39 GII	4008321383334	
	QTi 1x14/24 DIM	4050300870922	
	QTi 1x28/54/35/49 GII	4008321383358	
	QTi 1x35/49/80 GII	4008321383372	
	QTi 2x14/24/21/39 GII	4008321383396	
	QTi 2x14/24 DIM	4050300870946	
	QTi 2x28/54/35/49 GII	4008321383419	
	QTi 2x35/49/80 GII	4008321658951	
	QTi 3x14/24 DIM	4008321069719	
	QTi 4x14/24 DIM	4008321069993	
	QTi DALI 1x14/24 DIM	4050300870380	
	QTi DALI 2x14/24 DIM	4050300870861	
	QTi DALI 3x14/24 DIM	4008321069955	
	QTi DALI 4x14/24 DIM	4008321070036	
	QTP5 1x14-35	4008321329035	
	QTP5 2x14-35	4008321329073	
	QTP5 3x14, 4x14	4008321484598	1200 lm
	QTP5 3x14, 4x14	4008321484598	1200 lm