

1: Programming buttons

transmitter in lower lens, Receiver in upper lens



Product characteristics
Diffuse reflection sensor

Cube

Connector

Background suppression

Range 15...200mm (Range referred to white paper 200 x 200 mm, 90 % remission)
adjustable

Electrical data

Electrical design

DC PNP

Operating voltage [V]

10...30 DC

Current consumption [mA]

30

Type of light

Red light 624 nm

Protection class

III

Reverse polarity protection

yes

Outputs

Output function

light-on / dark-on programmable via pushbutton

Voltage drop [V]

< 2.5

Current rating [mA]

200

Short-circuit protection

pulsed

Overload protection

yes

Switching frequency [Hz]

1000

Range

Range [mm]

15...200 (Range referred to white paper 200 x 200 mm, 90 % remission)

- Object white (90 % remission)

15...200

- Object grey (18 % remission)

15...200

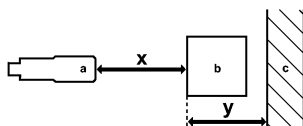
- Object black (6 % remission)

15...200

Light spot diameter [mm]

13 (at maximum range)

Accuracy graph



a: sensor

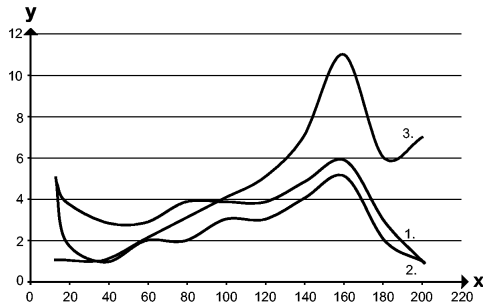
b: object

c: background

x: distance sensor / object

y: min. distance object / background

OGH580 - Diffuse reflection sensor - eclass: 27270904 / 27-27-09-04



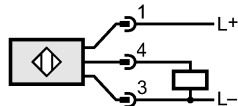
Values in [mm]

- 1 = object black (6 % remission), background white (90 % remission)
- 2 = object grey (18 % remission), background white (90 % remission)
- 3 = object white (90 % remission), background white (90 % remission)

Environment

Ambient temperature	[°C]	-25...60
Protection		IP 67
Tests / approvals		
EMC		EN 60947-5-2
MTTF	[Years]	359
Mechanical data		
Housing materials		Zinc Alloy; PEI
Lens material		PEI
Weight	[kg]	0.06
Displays / operating elements		
Output status indication	LED	yellow
Operation	LED	green
Electrical connection		
Connection		M12 connector

Wiring



Accessories

Accessories (included)		1 lock nut
Remarks		
Remarks		cULus - Class 2 source required
Pack quantity	[piece]	1