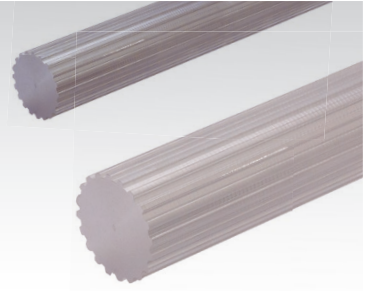
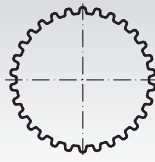
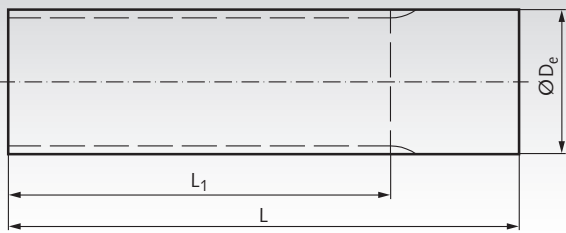


## Timing Bars, for Timing Belts Profile T, Steel and Stainless Steel



Material: Steel C45.

Stainless steel 1.4305 (AISI 303).



Ordering Details: e.g.: Product No. 16291001, Timing Bar T5, No. of Teeth 10, Steel

*Other types and materials on request.*

### Profile T 5, Steel

Product No.	Number of teeth	De mm	L1 mm	L mm	Weight kg
162 910 01	10	15,08	140	140	0,18
162 912 01	12	18,26	140	140	0,26
162 914 01	14	21,44	140	140	0,36
162 915 01	15	23,03	140	140	0,41
162 918 01	18	27,81	140	140	0,61
162 920 01	20	30,99	160	160	0,9
162 924 01	24	37,36	160	160	1,25
162 925 01	25	38,95	160	160	1,36
162 930 01	30	46,91	160	160	2,03
162 932 01	32	50,09	160	160	2,32
162 935 01	35	54,86	160	160	2,94
162 936 01	36	56,46	160	160	2,95
162 940 01	40	62,82	160	160	3,86
162 948 01	48	75,55	160	160	5,36
162 960 01	60	94,65	160	160	8,55

### Profile T 10, Steel

Product No.	Number of teeth	De mm	L1 mm	L mm	Weight kg
164 910 01	10	29,97	140	140	0,66
164 914 01	14	42,7	160	160	1,65
164 915 01	15	45,89	160	160	1,85
164 918 01	18	55,44	160	160	2,78
164 920 01	20	61,8	160	160	3,48
164 924 01	24	74,53	160	160	5,01
164 925 01	25	77,72	160	160	5,36
164 930 01	30	93,63	160	160	7,99
164 932 01	32	100	160	160	9,21
164 936 01	36	112,73	160	160	11,76
164 940 01	40	125,46	160	160	14,86

### Profile T 5, Stainless Steel

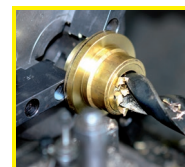
Product No.	Number of teeth	De mm	L1 mm	L mm	Weight kg
162 999 10	10	15,08	140	140	0,18
162 999 12	12	18,26	140	140	0,26
162 999 14	14	21,44	140	140	0,36
162 999 15	15	23,03	140	140	0,41
162 999 16	16	24,62	140	140	0,46
162 999 18	18	27,81	140	140	0,61
162 999 20	20	30,99	160	160	0,9
162 999 24	24	37,36	160	160	1,25
162 999 25	25	38,95	160	160	1,36
162 999 30	30	46,91	160	160	2,03
162 999 32	32	50,09	160	160	2,32
162 999 36	36	56,46	160	160	2,95
162 999 40	40	62,82	160	160	3,86
162 999 48	48	75,55	160	160	5,36
162 999 50	50	78,74	160	160	5,85
162 999 60	60	94,65	160	160	8,55

### Profile T 10, Stainless Steel

Product No.	Number of teeth	De mm	L1 mm	L mm	Weight kg
164 999 10	10	29,97	140	140	0,66
164 999 12	12	36,34	140	140	0,98
164 999 14	14	42,7	160	160	1,65
164 999 15	15	45,89	160	160	1,85
164 999 16	16	49,07	160	160	2,14
164 999 18	18	55,44	160	160	2,78
164 999 20	20	61,8	160	160	3,48
164 999 24	24	74,53	160	160	5,01
164 999 25	25	77,72	160	160	5,36
164 999 30	30	93,63	160	160	7,99
164 999 32	32	100	160	160	9,21
164 999 36	36	112,73	160	160	11,76
164 999 40	40	125,46	160	160	14,86



Flanges page 198



Reworking within  
24h-service possible.  
Custom made parts  
on request.