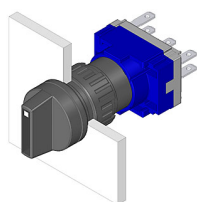


# EAO – Your Expert Partner for Human Machine Interfaces

## 61-4210.0 - Selector switch actuator 2 positions round

### 61-4210.0 - Selector switch actuator 2 positions round



*Attention: The preview is based on a sample product. This can differ from your current configuration.*

#### Mounting

Mounting cut-out      Ø 16 mm  
Design                    raised

#### Front

Front dimension      Ø 18 mm  
Front shape            round

#### Other Attributes

Weight                    0,006 kg

#### Operating-/Indication part

Switching angle      90° right  
Lever illumination  
Lever shape            short  
Lever material        Plastic

#### IP-Rating

Front protection      IP65

#### Actuator

Switching action      Rest - Maintain

#### Switching element

Rotary positions      2

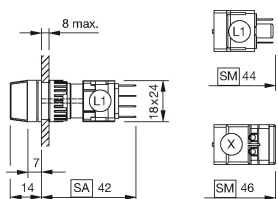
#### Function

Selector switch

# EAO – Your Expert Partner for Human Machine Interfaces

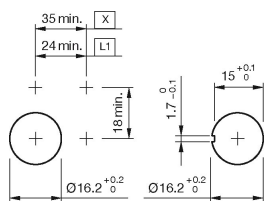
## 61-4210.0 - Selector switch actuator 2 positions round

### Dimensions



L1 = Solder/Plug-in terminal 2.8 x 0.5 mm

### Mounting cut-outs



L1 = Solder/Plug-in terminal 2.8 x 0.5 mm

### Wiring diagram



### Additional information

illuminative

If mounted with anti-twist device, the lug is on the left side

Anti-twist ring not needed by using anti-twist device

### Legend

Switching action: A = Rest, C = Maintained