



SAW Components

SAW Rx filter

WCDMA Band III

Series/Type:	B9896
Ordering code:	B39182B9896P810
Date:	July 4, 2013
Version:	2.0



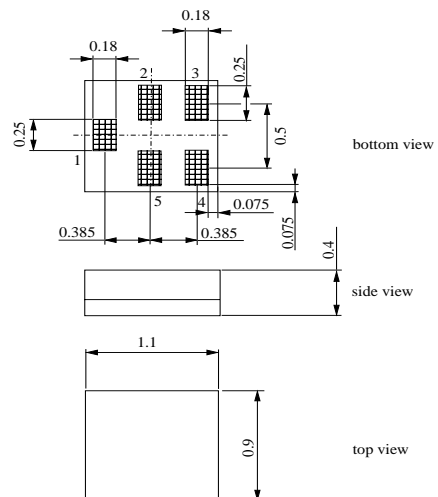
Application

- Low-loss RF filter for mobile telephone WCDMA Band III, receive path (RX)
- Suitable for diversity applications
- High TX suppression
- Impedance transformation from 50 Ω to 100 Ω
- Unbalanced to balanced operation
- Usable passband: 75 MHz



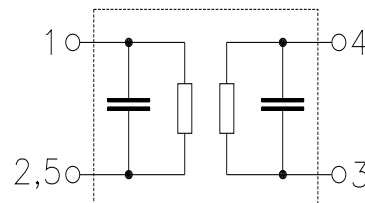
Features

- Package size 1.1 x 0.9 x 0.4 mm³
- RoHS compatible
- Approx. weight 0.001g
- Package for Surface Mount Technology (SMT)
- Ni, gold-plated terminals
- Electrostatic Sensitive Device (ESD)
- Moisture Sensitive Level (MSL) 3



Pin configuration

- 1 Input, unbalanced
- 3,4 Output, balanced
- 2,5 Case-ground





Data Sheet



Characteristics

Temperature range for specification: $T = -20\text{ °C to }+85\text{ °C}$
 Terminating source impedance: $Z_S = 50\ \Omega \parallel 8.2\text{nH}$ (unbalanced)
 Terminating load impedance: $Z_L = 100\ \Omega \parallel 11\text{nH} + 2 \times 2.2\text{pF}$ (balanced)

		min.	typ. @ 25 °C	max.	
Center frequency	f_C	—	1842.5	—	MHz
Average insertion attenuation					
1805.0 ... 1880.0 MHz	α_{CW}		1.5 ¹⁾		dB
Maximum insertion attenuation					
1805.0 ... 1880.0 MHz	α_{CW}		2.2	3.8	dB
1805.0 ... 1880.0 MHz	α_{CW} ²⁾		2.2	3.5	dB
1805.0 ... 1880.0 MHz	α_{CW} ³⁾		2.2	4.1	dB
Amplitude ripple (p-p)					
1805.0 ... 1880.0 MHz	$\Delta\alpha$		1.1	2.7	dB
1805.0 ... 1880.0 MHz	$\Delta\alpha$ ²⁾		1.1	2.4	dB
1805.0 ... 1880.0 MHz	$\Delta\alpha$ ³⁾		1.1	3.0	dB
Error Vector Magnitude⁴⁾					
@ $f_{Carrier}$ Bd 3 RX	1807.4 ... 1877.6 MHz	EVM	2.6	5.0	%
@ $f_{Carrier}$ Bd 3 RX	1807.4 ... 1877.6 MHz	EVM ²⁾	2.6	4.0	%
@ $f_{Carrier}$ Bd 3 RX	1807.4 ... 1877.6 MHz	EVM ³⁾	2.6	5.5	%
Input VSWR	1805.0 ... 1880.0 MHz		1.5	2.0	
Output VSWR	1805.0 ... 1880.0 MHz		1.6	2.0	
CMRR ($S_{21}-S_{31} / S_{21}+S_{31}$)					
1805.0 ... 1880.0 MHz		20	26		dB
1805.0 ... 1880.0 MHz	²⁾	20	26		dB
1805.0 ... 1880.0 MHz	³⁾	20	26		dB

1) Average value of the parameter over the indicated band. The average value may vary over time.
 2) Temperature range +0 °C to +85 °C
 3) Temperature range -30 °C to +85 °C
 4) Error Vector Magnitude (EVM) for WCDMA signal based on definition given in 3GPP TS 25.141.



Data Sheet



Characteristics

Temperature range for specification:

$$T = -20\text{ °C to }+85\text{ °C}$$

Terminating source impedance:

$$Z_S = 50\ \Omega \parallel 8.2\text{nH (unbalanced)}$$

Terminating load impedance:

$$Z_L = 100\ \Omega \parallel 11\text{nH} + 2 \times 2.2\text{pF (balanced)}$$

				min.	typ. @ 25°C	max.	
Attenuation			α				
	DC	...	115.0 MHz	40	120		dB
	115.0	...	1615.0 MHz	40	59		dB
	1615.0	...	1690.0 MHz	40	53		dB
	1690.0	...	1710.0 MHz	40	61		dB
	1710.0	...	1785.0 MHz	40	47		dB
	1785.0	...	1790.0 MHz	8	44		dB
	1920.0	...	1965.0 MHz	40	44		dB
	1965.0	...	3515.0 MHz	40	44		dB
	3515.0	...	3665.0 MHz	40	76		dB
	3665.0	...	6000.0 MHz	40	48		dB



SAW Components **B9896**

SAW Filter **1842.5 MHz**

Data Sheet



Annotation for characteristics section

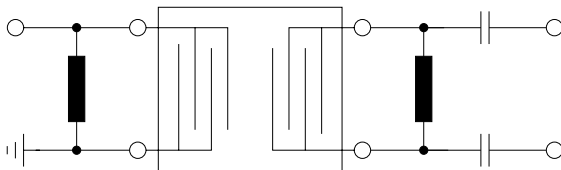
Attenuation of WCDMA signal (“Powertransferfunction”, α_{WCDMA}) is determined by

$$\int_{-\infty}^{\infty} |S_{ds21}(f)H_{RRC}(f - f_{Carrier})|^2 df$$

$f_{Carrier}$ according to 3GPP TS 25.101 (e.g. for band III RX passband, $f_{Carrier}$ ranges from 1807.4 MHz (lowest RX channel) to 1877.6 MHz (highest RX channel)). $H_{RRC}(f)$ is the transfer function of the root-raised cosine transmit pulse shaping filter according to 3GPP TS 25.101 with the following normalization:

$$\int_{-\infty}^{\infty} |H_{RRC}(f)|^2 df = 1$$

Matching topology proposal for improved VSWR in 50/100Ω environment



Input (ubal): $L_p=8.2nH$

Output (bal): $L_p=11nH, C_s=2.2pF$

Maximum ratings

Operable temperature range	T	-40/+85	°C	
Storage temperature range	T _{stg}	-40/+85	°C	
DC voltage	V _{DC}	5	V	
ESD voltage	V _{ESD}	50 ¹⁾	V	machine model, 1 pulse
Input power	P _{IN(TX)}	17	dBm	CW @55°C, 2000h, Bd III TX band
	P _{IN}	10	dBm	CW @55°C, 2000h, all other bands

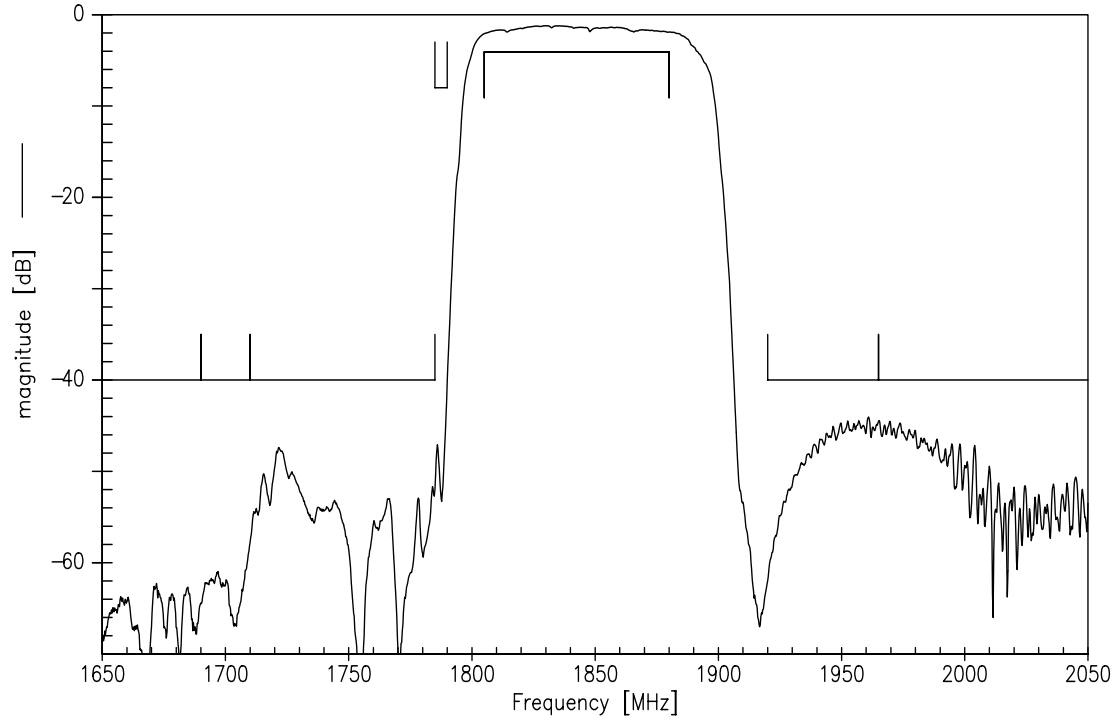
¹⁾ acc. to JESD22-A115A (machine model), 1 negative & 1 positive pulse.



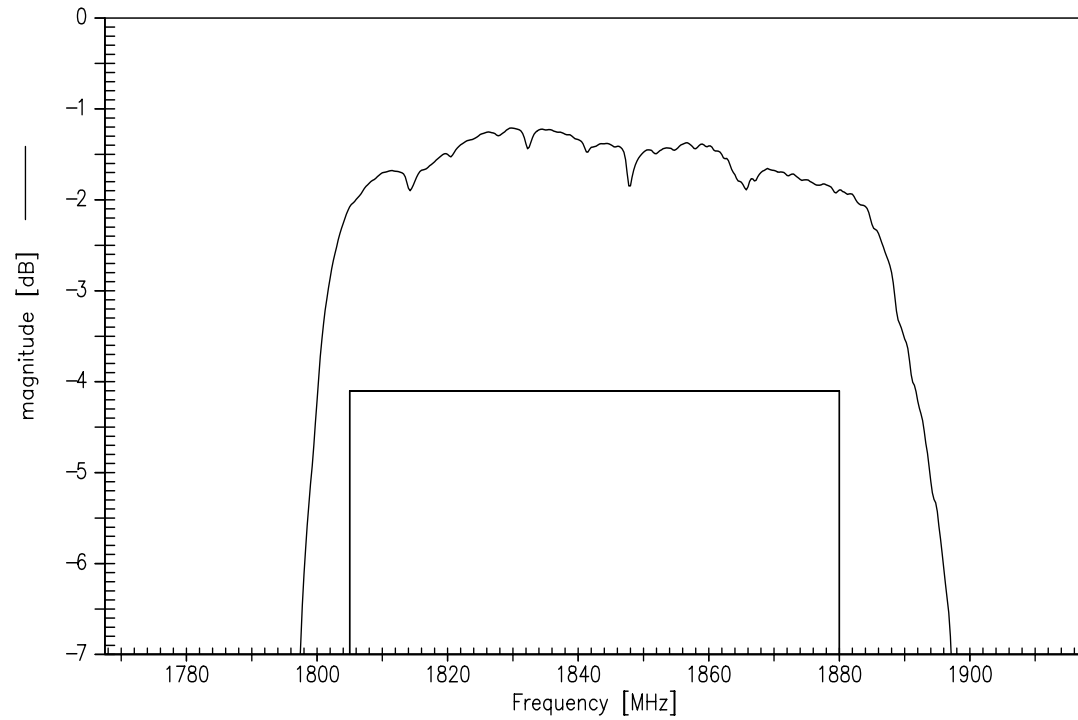
Data Sheet



Transfer function



Transfer function



Please read *cautions and warnings and important notes* at the end of this document.



SAW Components

B9896

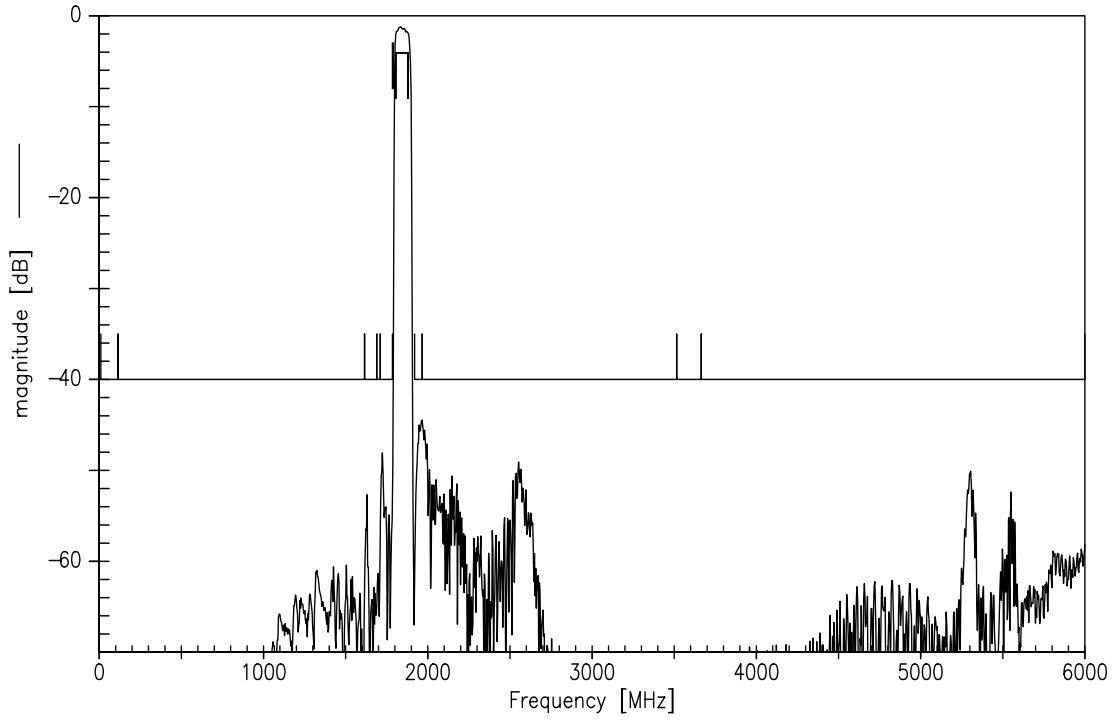
SAW Filter

1842.5 MHz

Data Sheet



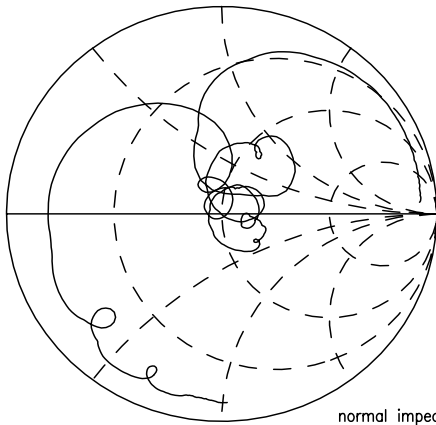
Transfer function (wideband)



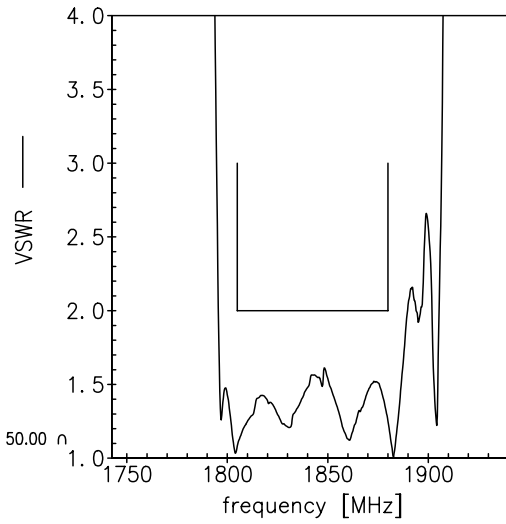


Smith charts (matching topology acc. to page 5)

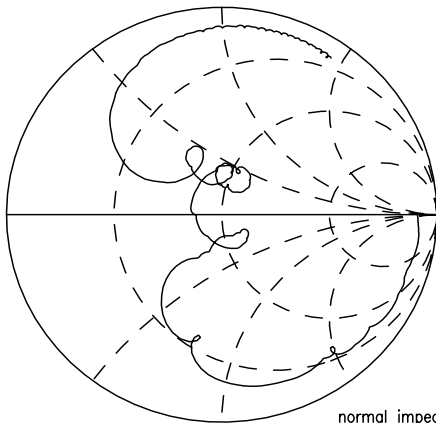
S₁₁ function



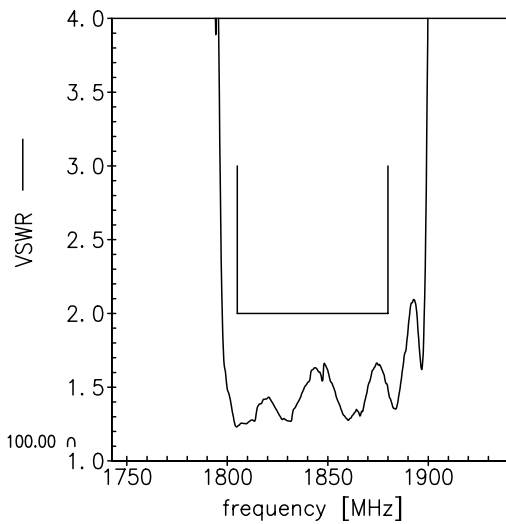
normal impedance: 50.00 Ω



S₂₂ function



normal impedance: 100.00 Ω





SAW Components **B9896**

SAW Filter **1842.5 MHz**

Data Sheet



References

Type	B9896
Ordering code	B39182B9896P810
Marking and package	C61157-A8-A56
Packaging	F61074-V8255-Z000
Date codes	L_1126
S-parameters	B9896_NB_UN.s3p, B9896_WB_UN.s3p see file header for port/pin assignment table
Soldering profile	S_6001
RoHS compatible	RoHS-compatible means that products are compatible with the requirements according to Art. 4 (substance restrictions) of Directive 2011/65/EU of the European Parliament and of the Council of June 8 th , 2011, on the restriction of the use of certain hazardous substances in electrical and electronic equipment ("Directive") with due regard to the application of exemptions as per Annex III of the Directive in certain cases.
Moldability	Before using in overmolding environment, please contact your EPCOS sales office.
Matching coils	See http://www.tdk.co.jp/tefe02/coil.htm#aname1 http://www.tdk.co.jp/etvcl/index.htm for a large variety of matching coils.

For further information please contact your local EPCOS sales office or visit our webpage at www.epcos.com.

Published by EPCOS AG
Systems, Acoustics, Waves Business Group
P.O. Box 80 17 09, 81617 Munich, GERMANY

© EPCOS AG 2013. This brochure replaces the previous edition.

For questions on technology, prices and delivery please contact the Sales Offices of EPCOS AG or the international Representatives.

Due to technical requirements components may contain dangerous substances. For information on the type in question please also contact one of our Sales Offices.

Please read *cautions and warnings and important notes* at the end of this document.



Important notes

The following applies to all products named in this publication:

1. Some parts of this publication contain **statements about the suitability of our products for certain areas of application**. These statements are based on our knowledge of typical requirements that are often placed on our products in the areas of application concerned. We nevertheless expressly point out **that such statements cannot be regarded as binding statements about the suitability of our products for a particular customer application**. As a rule, EPCOS is either unfamiliar with individual customer applications or less familiar with them than the customers themselves. For these reasons, it is always ultimately incumbent on the customer to check and decide whether an EPCOS product with the properties described in the product specification is suitable for use in a particular customer application.
2. We also point out that **in individual cases, a malfunction of electronic components or failure before the end of their usual service life cannot be completely ruled out in the current state of the art, even if they are operated as specified**. In customer applications requiring a very high level of operational safety and especially in customer applications in which the malfunction or failure of an electronic component could endanger human life or health (e.g. in accident prevention or life-saving systems), it must therefore be ensured by means of suitable design of the customer application or other action taken by the customer (e.g. installation of protective circuitry or redundancy) that no injury or damage is sustained by third parties in the event of malfunction or failure of an electronic component.
3. **The warnings, cautions and product-specific notes must be observed.**
4. In order to satisfy certain technical requirements, **some of the products described in this publication may contain substances subject to restrictions in certain jurisdictions (e.g. because they are classed as hazardous)**. Useful information on this will be found in our Material Data Sheets on the Internet (www.epcos.com/material). Should you have any more detailed questions, please contact our sales offices.
5. We constantly strive to improve our products. Consequently, **the products described in this publication may change from time to time**. The same is true of the corresponding product specifications. Please check therefore to what extent product descriptions and specifications contained in this publication are still applicable before or when you place an order. We also **reserve the right to discontinue production and delivery of products**. Consequently, we cannot guarantee that all products named in this publication will always be available. The aforementioned does not apply in the case of individual agreements deviating from the foregoing for customer-specific products.
6. Unless otherwise agreed in individual contracts, **all orders are subject to the current version of the "General Terms of Delivery for Products and Services in the Electrical Industry" published by the German Electrical and Electronics Industry Association (ZVEI)**.
7. The trade names EPCOS, BAOKE, Alu-X, CeraDiode, CSMP, CSSP, CTVS, DeltaCap, DigiSiMic, DSSP, FormFit, MiniBlue, MiniCell, MKD, MKK, MLSC, MotorCap, PCC, PhaseCap, PhaseCube, PhaseMod, PhiCap, SIFERRIT, SIFI, SIKOREL, SilverCap, SIMDAD, SiMic, SIMID, SineFormer, SIOV, SIP5D, SIP5K, ThermoFuse, WindCap are **trademarks registered or pending** in Europe and in other countries. Further information will be found on the Internet at www.epcos.com/trademarks.