

Belt sanding machine GI 150 2H



Application:

Each component in this machine is attuned to the needs of rigorous professional application. A particularly high-performance motor constantly maintains the rotation speed and thus ensures a high cutting capacity – even in long-term use! Ideal for machining stainless steel and can be expanded with modules.

Version:

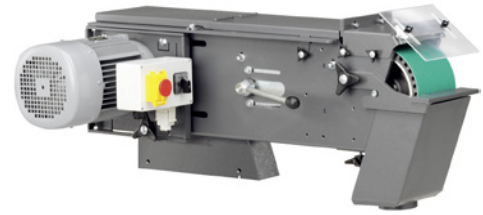
- can be expanded with modules
- S1 three-phase motor 400 V, 50 Hz
- patented belt tensioning system
- low-vibration
- with emergency stop switch
- adjustable working height

Advantage:

- easy conversion to radius, round and surface-grinding machine
- optional connection for suction devices for clean work
- adjustable working height by means of gas pressure spring with no energy expenditure

Delivery:

CEE plug (16 A9), 1 sanding belt (150 x 2000 mm, grain 40)



Art. no.	78238 110
Model	GRIT GI 150 2 H
Max. sanding belt width	150 mm
Grinding belt length	2000 mm
Max. belt speed	30 m/s
Total motor speed	1500/3000 rpm
Total engine capacity	2.6/3.1 kW
Weight	82 kg

EAN-Code

4014586859019