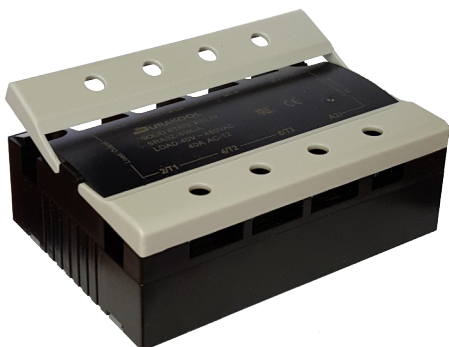


# SRA3

solid-state relay - three phase

# DURAKOOL



- High load voltage - up to 480VAC
- 4 - 32VDC or 90 - 250VAC control voltage
- Zero cross-over or Random switching
- LED input indicator
- Finger protected terminals
- RoHS Compliant



## Output (load)

Load type		3PST-NO (3 N/O) Resistive
Load current		10A, 20A, 25A, 30A, 40A, 60A, or 80A
Load switching voltage	AC V <sub>rms</sub>	24 - 240V, 40 - 480V
Maximum peak voltage	AC V <sub>pk</sub>	900V
Switch type		Zero Cross (std) or Random
On voltage drop	V AC	1.5V
Leakage current (off state)	mA	≤ 7mA

## Input (control)

Control voltage	V	D: 4 - 32VDC or A: 90 - 250VAC
Control current	mA	< 20mA
Turn-on voltage	V <sub>min</sub>	D: 3VDC / A: 90VAC
Turn-off voltage	V	D: 1VDC / A: 10VAC

## Insulation

Insulation resistance		≤ 500MΩ at 500VDC, 50%RH
Dielectric strength	V AC	≥ 2500V

## General Data

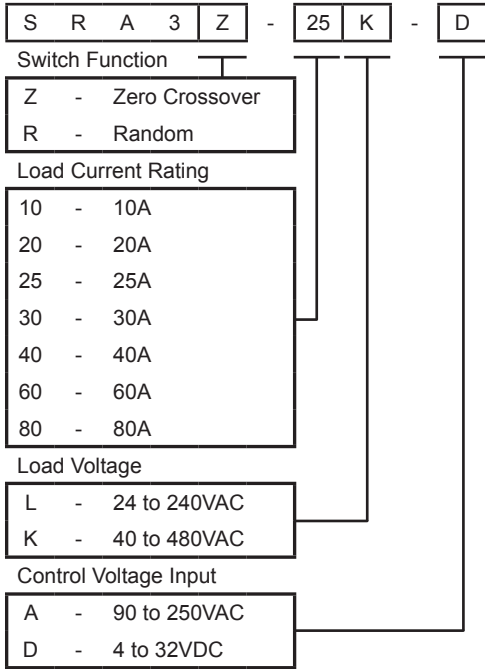
Operating time	ms	approx 1/2 cycle of load frequency + ≤1ms (zero x-over)
Release time	ms	approx 1/2 cycle of load frequency + ≤1ms (zero x-over)
Dimensions	L x W x H	106 x 75 x 38mm
Weight		various 365g 10A ~ 500g 80A
Ambient temperature	storage	-30 to 80°C
	operating	-30 to 80°C (with derating). A heat sink may be required.

# SRA3

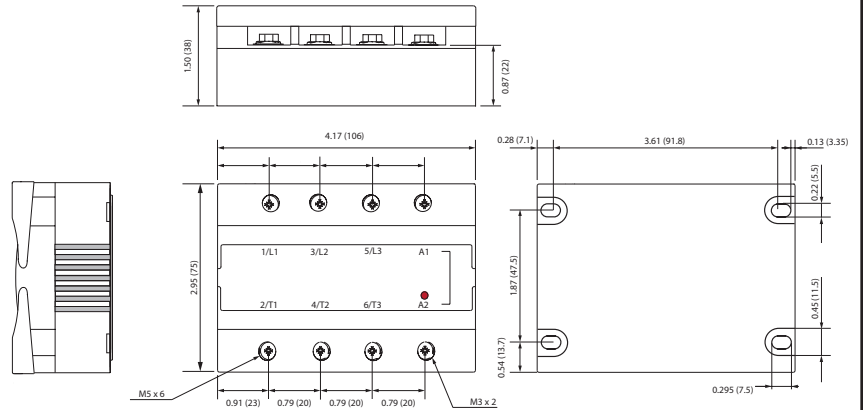
## solid-state relay - three phase



### Ordering Code



### Dimensions



Dimensions in inches (mm)

Fig.2

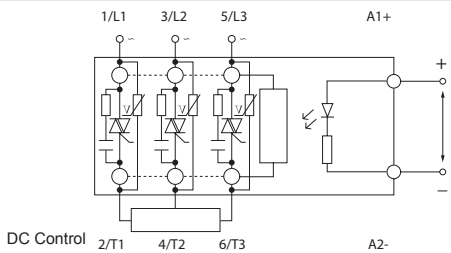


Fig.3

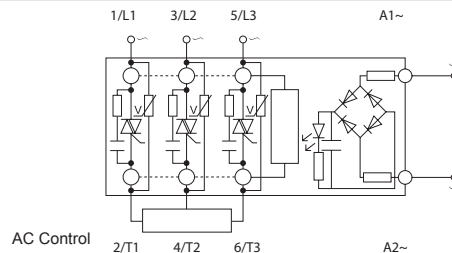


Fig.4

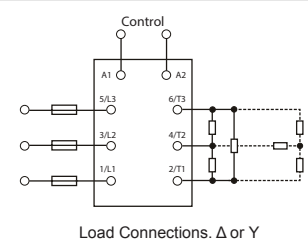


Table 1

Fig. 5

SSR Series	SRA3*-10*.*	SRA3*-25*.*	SRA3*-40*.*	SRA3*-60*.*
	SRA3*-20*.*	SRA3*-30*.*		SRA3*-80*.*
Current rating	≤ 20A	≤ 30A	≤ 40A	≤ 80A
Heat Sink	DHS05	DHS06	DHS07	DHS08 (or DHS09)
Heat Sink Rating °C/W	0.93	0.65	0.48	0.44 (0.39)

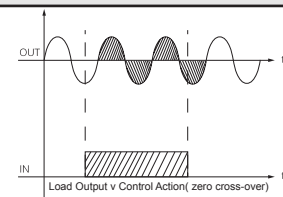
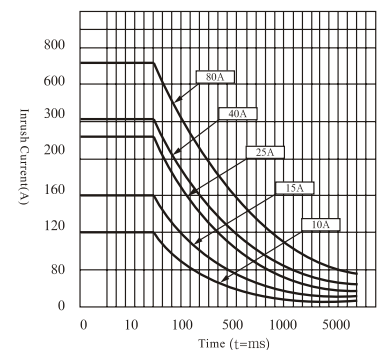
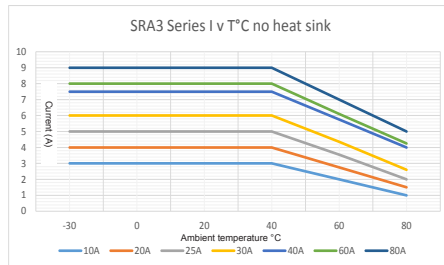
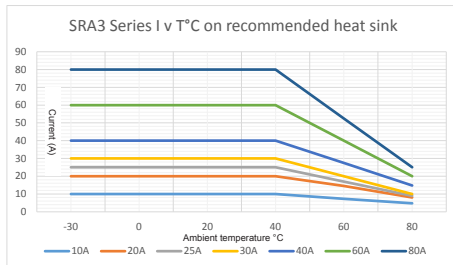


Fig.6

Fig.7

Fig.8



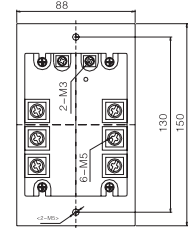
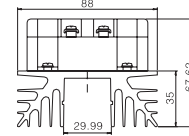
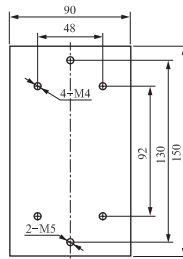
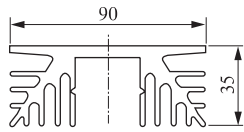
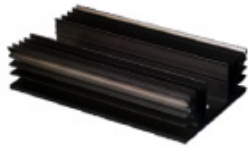
# SRA3

solid-state relay - three phase

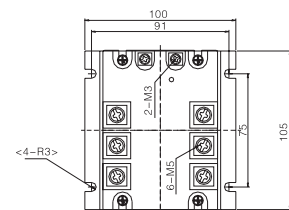
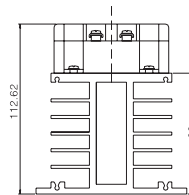
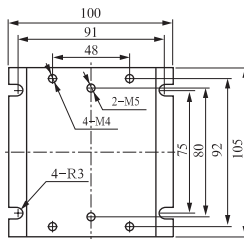
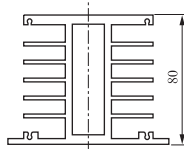


## Heat Sinks

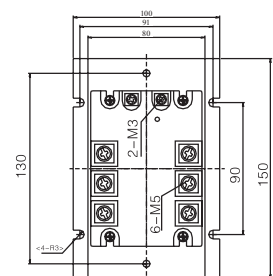
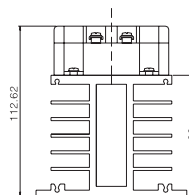
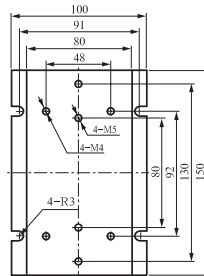
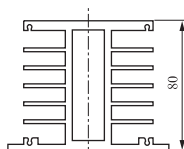
### DHS05



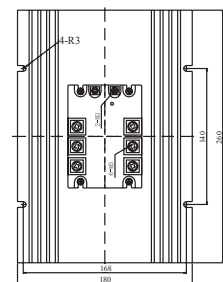
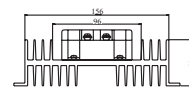
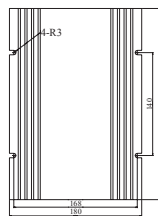
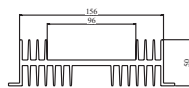
### DHS06



### DHS07



### DHS08



### DHS09

