

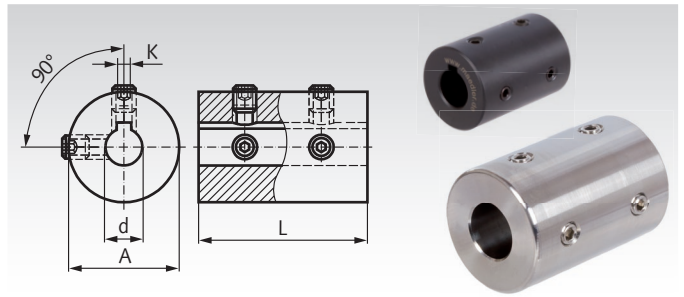
## Set-Screw Couplings TR

**Material:** Steel C45, black oxide finish.  
Stainless Steel 1.4305 (AISI 303).



Bore tolerance: +0.05 mm.

These couplings do not allow any shaft displacement in axial or radial direction. They should therefore only be used with perfectly aligned shafts.



Ordering Details: e.g.: Product No. 600 106 00, Set Screw Coupling TR, Steel without Keyway, Bore 6 mm

Product No. without keyway Steel	Product No. without keyway Stainless Steel	Product No. with keyway* Steel	Product No. with keyway* Stainless Steel	Torque T**		d mm	A mm	L mm	K mm	Screws DIN 916	Fastening Torque T <sub>A</sub>		Weight g
				Steel Nm	Stainless Nm						Steel Nm	Stainless Nm	
600 106 00	600 991 06	600 206 00	600 992 06	4	2,7	6	18	30	2	M4	2,2	1,76	47
600 108 00	600 991 08	600 208 00	600 992 08	8	5,4	8	24	35	2	M4	2,2	1,76	102
600 110 00	600 991 10	600 210 00	600 992 10	12	8,1	10	29	45	3	M5	4,0	3,2	185
600 112 00	600 991 12	600 212 00	600 992 12	17	12	12	29	45	4	M6	7,2	5,8	180
600 114 00	600 991 14	600 214 00	600 992 14	30	20	14	34	50	5	M6	7,2	5,8	272
600 115 00	600 991 15	600 215 00	600 992 15	32	22	15	34	50	5	M6	7,2	5,8	266
600 116 00	600 991 16	600 216 00	600 992 16	35	24	16	34	50	5	M6	7,2	5,8	261
600 120 00	600 991 20	600 220 00	600 992 20	70	47	20	42	65	6	M6	7,2	5,8	518
600 125 00	600 991 25	600 225 00	600 992 25	135	91	25	45	75	8	M8	17	13,6	623
600 130 00	600 991 30	600 230 00	600 992 30	155	105	30	53	83	8	M8	17	13,6	920
600 135 00	600 991 35	600 235 00	600 992 35	230	155	35	67	95	10	M8	17	13,6	1880
600 140 00	600 991 40	600 240 00	600 992 40	310	210	40	77	108	12	M10	33	26,4	2710
600 150 00	-	600 250 00	600 992 50	490	340	50	85	124	14	M10	33	26,4	3520

\* Feather Key Groove DIN 6885/1, Tolerance P9.

\*\* For couplings with keyway: calculations based on feather-key connection.

For couplings without keyway, the transmittable torque is lower and depends on how far the set screws penetrate the shaft.

## Clamp Couplings (Box couplings) DIN 115 Made from Cast Iron

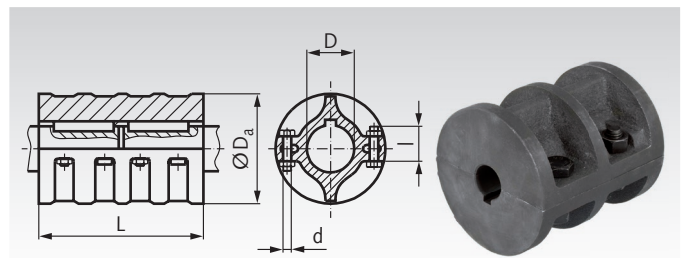
**Material:** Grey Cast Iron GG25.

Up to 50 mm bore these two-part couplings are manufactured according to bore tolerance zone V7. For larger bores the fit is U7. All bores have a feather key groove according to DIN 6885/1. Recommended shaft tolerance: f7.

A bearing must be placed right beside both ends of the coupling. Box couplings can be assembled and dismantled in radial direction without moving the shaft in vertical direction.

Version A: For shafts of the same diameter.

Version B: For shafts of different diameter available on request.



Ordering Details: e.g.: Product No. 600 020 00, clamp Coupling DIN 115 with Keyway

Product No. (with Keyway) Version A	Torque max. Nm	D mm	D <sub>a</sub> mm	L mm	Hexagon Screws DIN 931		Speed n <sub>max.</sub> min <sup>-1</sup>	Weight kg
					Amount	d x l mm		
600 020 00	25	20	85	100	4	M10 x 30	1700	1,9
600 025 00	40	25	100	130	4	M12 x 40	1500	4,5
600 030 00	60	30	100	130	4	M12 x 40	1500	4,2
600 035 00	80	35	110	160	6	M12 x 50	1420	6,5
600 040 00	100	40	110	160	6	M12 x 50	1420	6,2
600 045 00	125	45	120	190	6	M12 x 50	1350	8,5
600 050 00	150	50	130	190	6	M12 x 50	1300	9
600 055 00	500	55	150	220	6	M16 x 60	1200	13
600 060 00	850	60	150	220	6	M16 x 60	1200	12,5
600 065 00	1250	65	170	250	6	M16 x 60	1120	18,5
600 070 00	1700	70	170	250	6	M16 x 60	1120	17
600 080 00	2500	80	190	280	8	M16 x 60	1060	27
600 090 00	3800	90	215	310	8	M20 x 75	1000	41
600 100 00	5400	100	250	350	8	M20 x 90	920	63