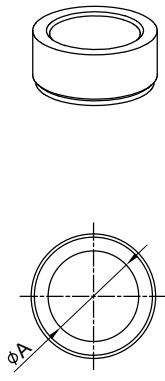
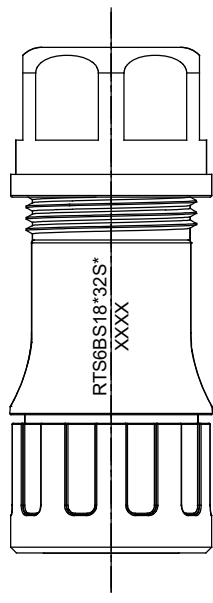
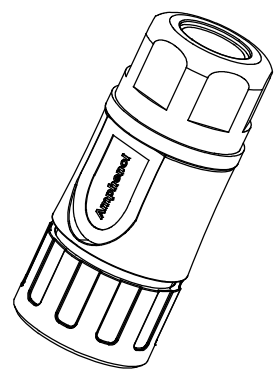
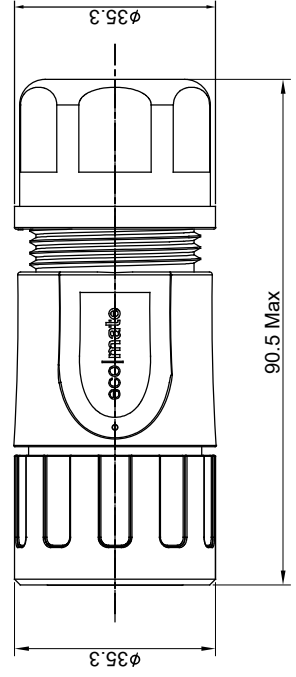
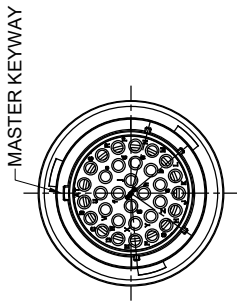


REVISIONS

REV	ECO	DESCRIPTION	DATE	BY	APPR
A1	--	RELEASED DRAWING	Dec-26-2016	Ben	Tommy



- NOTES : (UNLESS OTHERWISE SPECIFIED)
- MATERIAL :
 - SHELL : THERMOPLASTIC , UL94 V-0.
 - INSERT : THERMOPLASTIC , UL94 V-0.
 - COUPLING NUT : THERMOPLASTIC , UL94 V-0.
 - O-RING : NBR/SILICONE RUBBER.
 - BACK SHELL : THERMOPLASTIC , UL94 V-0.
 - CLAMP NUT : THERMOPLASTIC , UL94 V-0.
 - PLASTIC RING : THERMOPLASTIC , UL94 V-0.
 - RUBBER RING : NBR/SILICONE RUBBER.
 - SPECIFICATIONS :
 - 2.1 RATED CURRENT :
 - 2.1.1 STAMPED CONTACT 5A (MAX).
 - 2.1.2 MACHINED CONTACT 7.5A (MAX).
 - 2.2 RATED VOLTAGE : 250V(AC/DC).
 - 2.3 OPERATING TEMPERATURE : SEE CHART .
 - 2.4 DIELECTRIC WITHSTANDING VOLTAGE : LESS THAN 2 MILLIAMPS CURRENT LEAKAGE@1500 VOLTS AC.
 - 2.5 INSULATION RESISTANCE : 5000 MEGOHMS MIN.
 - 2.6 IP--CLASS : IP67.
 - 2.7 MATING CYCLES DURABILITY : 500 CYCLES MIN.
 - 2.8 RoHS COMPLIANT.
 - SUITABLE CONTACTS : 20# CONTACTS.
 - ALL DIMENSIONS ARE FOR REFERENCE USE ONLY.

DIMENSION ϕ A	CABLE OD RANGE
16.5 MM	7.0-16.0 MM
18.5 MM	9.0-18.0 MM

KEY	PART NUMBER	DESCRIPTION
	-40°C ~ +105°C	-40°C ~ +125°C
N	RTS6BS18N32S	RTS6BS18N32S03

QUANTITY	PART NUMBER	DESCRIPTION	ITEM
		MATERIALS LIST	
UNLESS OTHERWISE SPECIFIED			
1) All dimensions are in metric(mm).			
2) Tolerances are as follows:			
DRAWN	Ben	DATE	Dec-26-2016
CHECKED	Ted	DATE	Dec-26-2016
3) PL DEC 40,15	Angle: ±1/64		
APPROVAL:	Tommy		
CUSTOMER:	Tommy		
MATERIAL SPECIFICATIONS:			
THIS DRAWING IS SUPPLIED FOR YOUR USES. SPECIFICATIONS AND PERFORMANCE DATA SHOWN HEREON ARE THE PROPERTY OF AMPHENOL SINE. NO RIGHTS OF REPRODUCTION ARE IMPLIED. ALL DIMENSIONS ARE IN UNLESS OTHERWISE MANUFACTURING VARIATIONS.			
PROCESS SPECIFICATIONS:			
NEXT ASSY:			
Amphenol Sine Systems - www.amphenol-sine.com 44724 Money Drive Clinton Township, MI 48036			ECO-MATE, PLUG, BACK SHELL, SIZE 18,32POS. SOCKET.
SIZE	TYPE	DWG NO	RELEASED
B C-	NONE	RTS6BS18*32S*	A1
SCALE		SHEET 1	OF 1

ecomate® RM/RSSM/Aquarius™ - Contact Size 20 Options

Crimp Contacts, Machined				
Part Number	Wire Range (mm ²)		Plating	
	Male	Female		
MP20W23F	MS20W23G5	MS20W23F	Gold Flash	
MP20W23G5	MS20W23G10	MS20W23G5	Gold 5µ"	
MP20W23G10	MS20W23G15	MS20W23G10	Gold 10µ"	
MP20W23G15	MS20W23G30	MS20W23G15	Gold 15µ"	
MP20W23G30	MS24W23F	MS20W23G30	Gold 30µ"	
MP24W23F	MS24W23G5	MS24W23F	Gold Flash	
MP24W23G5	MS24W23G10	MS24W23G5	Gold 5µ"	
MP24W23G10	MS24W23G15	MS24W23G10	Gold 10µ"	
MP24W23G15	MS24W23G30	MS24W23G15	Gold 15µ"	
MP24W23G30	MS28W23F	MS24W23G30	Gold 30µ"	
MP28W23F	MS28W23G5	MS28W23F	Gold Flash	
MP28W23G5	MS28W23G10	MS28W23G5	Gold 5µ"	
MP28W23G10	MS28W23G15	MS28W23G10	Gold 10µ"	
MP28W23G15	MS28W23G30	MS28W23G15	Gold 15µ"	
MP28W23G30		MS28W23G30	Gold 30µ"	

Tooling, Machined	
Part Number	Description
QXRT20	Contact Extraction Tool, #20 (Ø 1.0), Contact
MFx-3959	Hand Crimp Tool for Machined Contacts
MFx-3960	Pneumatic Crimp Tool for Machined Contact

Plating Options, All	
Symbol	Plating
T	Tin Plated (for Stamped & Formed Contacts)
S	Silver Plated 5µm (for Machined Contacts)
F	Gold Plated
G5	Gold Plated (Thickness 5µ")
G10	Gold Plated (Thickness 10µ")
G15	Gold Plated (Thickness 15µ")
G30	Gold Plated (Thickness 30µ")

Crimp Contacts, Stamped & Formed				
Part Number	Wire Range (mm ²)		Plating	
	Male	Female		
SP20W2F	SS20W2G5	SS20W2F	Gold Flash	
SP20W2G5	SS20W2G10	SS20W2G5	Gold 5µ"	
SP20W2G10	SS20W2G15	SS20W2G10	Gold 10µ"	
SP20W2G15	SS20W2G30	SS20W2G15	Gold 15µ"	
SP20W2G30	SS24W2F	SS20W2G30	Gold 30µ"	
SP24W2F	SS24W2G5	SS24W2F	Gold Flash	
SP24W2G5	SS24W2G10	SS24W2G5	Gold 5µ"	
SP24W2G10	SS24W2G15	SS24W2G10	Gold 10µ"	
SP24W2G15	SS24W2G30	SS24W2G15	Gold 15µ"	
SP24W2G30	SS28W2F	SS24W2G30	Gold 30µ"	
SP28W2F	SS28W2G5	SS28W2F	Gold Flash	
SP28W2G5	SS28W2G10	SS28W2G5	Gold 5µ"	
SP28W2G10	SS28W2G15	SS28W2G10	Gold 10µ"	
SP28W2G15	SS28W2G30	SS28W2G15	Gold 15µ"	
SP28W2G30		SS28W2G30	Gold 30µ"	

Tooling, Stamped & Formed	
Part Number	Description
QXRT20	Contact Extraction Tool, #20 (Ø 1.0) Contact
MFx-3958	Hand Tool, Stamped & Formed Contact, Size 20, 20-28AWG
MFx-3957	Crimp Die for Stamped & Formed Contact

Misc Tooling, All	
Part Number	Description
CA-4020-59	Sealing Plug, Size 16 & 20

Standard Quantity Order Options	
Machined	Stamped & Formed
Bulk Package, 500 Pieces	Reel, 3000 Pieces