

## Collet chucks type ER metal-sealed, according to DIN 6499 A/ISO 15488

Can be used up to 120 bar, concentricity < 2 µm

**ATORN**<sup>®</sup>

### Application

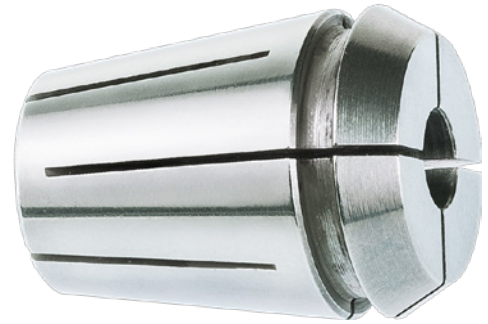
For use on precision collet chucks

### Version

- Metal sealed up to 120 bar for internal coolant supply

### Advantage

- Higher degree of concentricity extends service life of tool



<b>Art. No.</b>	<b>23388 882</b>
<b>Collet type</b>	ER 25
<b>Clamping diameter</b>	4 mm
<b>Outer diameter</b>	26 mm
<b>Length</b>	34 mm

### EAN-Code

4050293679755