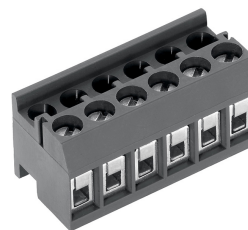


AK1350/..DS-3.5-GREY



Technical Data

Wire Sizes		Insulating Material	
Solid min	0.08 mm ²	Material	PA 6.6
solid max	1.5 mm ²	Flammability Class	UL 94 V-0
Stranded (flexible) min	0.08 mm ²	Temperatures	
Stranded (flexible) max	1.5 mm ²	Operating Temperature	-30 °C - 105 °C
Stranded with Ferrule min	0.14 mm ²	Wave Soldering Process	
Stranded with Ferrule max	0.5 mm ²	Soldering Temperature, recommended	-
Dimensions		Peak Soldering Time, recommended	-
Stripped Length	5.0 mm	Reflow Process	
Materials		Soldering Temperature, recommended	-
Clamp	Brass	Peak Soldering Time, recommended	-
Wire Guard	Stainless Steel		
Screw	Bronze		
Contact Spring	Bronze		

Colours

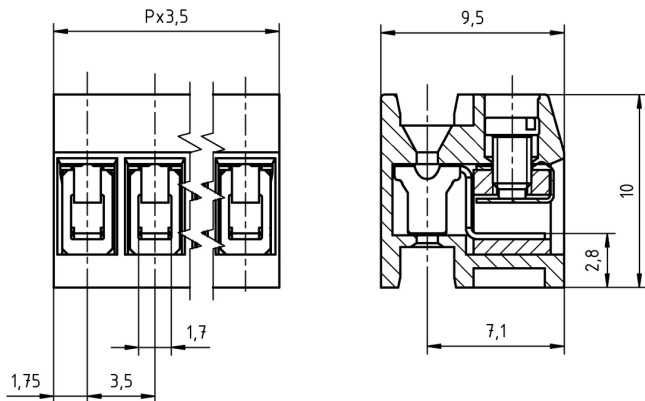
	GREY, RAL7016
	LIGHT GREEN, similar RAL 6018

Colours according to RAL, there may be variations on colour due to production conditions. Special colours on request.

Counterparts (Spacing 3.5 mm)

Pin Strip/Terminal Blocks	STL1350
---------------------------	---------

If there are combinations with different ratings, the lower value is valid.



Order Data (Spacing 3.5 mm)

Poles	Width (mm)	Article Designation	Article Number	PU
2	7.00	AK1350/2DS-3.5-GREY	51350020001G	250
3	10.50	AK1350/3DS-3.5-GREY	51350030001G	250
4	14.00	AK1350/4DS-3.5-GREY	51350040001G	250
5	17.50	AK1350/5DS-3.5-GREY	51350050001G	250
6	21.00	AK1350/6DS-3.5-GREY	51350060001G	250
7	24.50	AK1350/7DS-3.5-GREY	51350070001G	250
8	28.00	AK1350/8DS-3.5-GREY	51350080001E	100
9	31.50	AK1350/9DS-3.5-GREY	51350090001E	100
10	35.00	AK1350/10DS-3.5-GREY	51350100001E	100
11	38.50	AK1350/11DS-3.5-GREY	51350110001E	100
12	42.00	AK1350/12DS-3.5-GREY	51350120001E	100

Accessories

Figure	Designation	Article Number
	Bridge, 2-pole, BR/2-3.5/3.81-L4.7	50000000013
	Bridge, 3-pole, BR/3-3.5/3.81-L4.7	50000000014
	Bridge, 2-pole, insulated, BRI/2-7.0/7.62-L7.5-LIGHT GREY	50000000018
	Coding cover CC-AK1350-GREY	51350000000

Ratings



Usegroup	B	C	D	III	
Rated Voltage	150 V	-	150 V	125 V	
Rated Current	9 A	-	9 A	8 A	
Overvoltage Category					
Rated Wire Size			min		max
	solid	AWG 28-16	-	AWG 28-16	0.2 mm ² (4 A) 1.5 mm ² (8 A)
	stranded	AWG 28-16	-	AWG 28-16	0.2 mm ² (4 A) 1.5 mm ² (8 A)
Torque	0.25 Nm		-	0.25 Nm	0.25 Nm
Screw Size	M2		-	M2	M2
Test Voltage	1.3 kV		-	1.3 kV	2.5 kV
Pollution Degree	3				

* Approval Pending