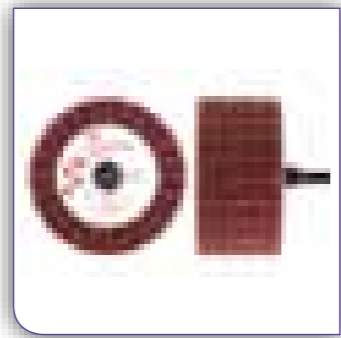


3M™ Roloc+™ Combi Flap Brush CB-ZR

3M™ Roloc+™ Cut & Polish Flap Brush PF-ZR

Mineral Aluminium oxide
Construction Alternate flaps of Scotch-Brite™ Web and X-weight coated cloth
Attachment Roloc+



Benefits

- Combination of Scotch-Brite Clean & Finish material and coated abrasive gives greater scratch depth, removes defects and reduces scratch roughness in one step
- Integrated shaft means brush is ready to use, saving downtime and process costs
- Produces a finer finish than a coated abrasive flap wheel

Applications

- Blending scratches on stainless steel; fine finishing aluminium prior to anodizing

Materials

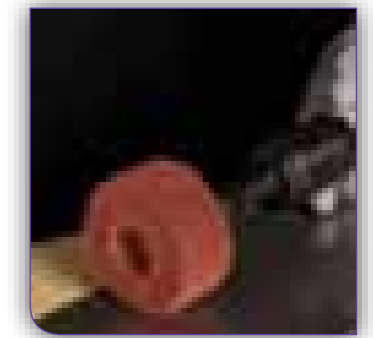
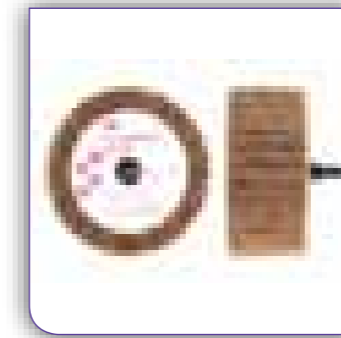
- All metals



SIZE	USE WITH	GRADE	MOS (RPM)	BRUSHES PER INNER	BRUSHES PER OUTER	MOQ (brushes)	PART NO.
63 x 32	Holder No. 1	P80	9,000	10	10	10	09717
63 x 32	Holder No. 1	P120	9,000	10	10	10	09720
63 x 32	Holder No. 1	P180	9,000	10	10	10	09723

For holders see P57

Mineral Aluminium oxide
Construction Flaps of Scotch-Brite™ Web bonded to a central core
Grades Medium
Attachment Roloc+



Benefits

- Three dimensional Scotch-Brite web produces consistent, repeatable results without damaging the workpiece
- Open, flexible flap construction is soft and pliable to produce uniform surface finishes without chatter marks

Applications

- Satin finishing and light deburring of larger components where the machine is taken to the part

Materials

- Wood
- Metal



SIZE mm	USE WITH	GRADE	MOS (RPM)	BRUSHES PER INNER	BRUSHES PER OUTER	MOQ (brushes)	PART NO.
50 x 25	Holder No. 1	AMED	12,000	25	25	25	09700
63 x 32	Holder No. 1	AMED	9,000	10	10	10	09701
75 x 35	Holder No. 1	AMED	8,000	10	10	10	09702

For holders see P57