

### RUNDDOSEN



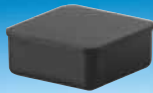
Art.-Nr.	<b>V 1-12-6-6-10-10</b>	<b>V 1-11-6-6-10-10</b>	<b>V 2-101-6-6-10-10</b>	<b>V 2-102-6-6-10-10</b>
Innenmaße	26 Ø x 13	26 Ø x 17,5	52 Ø x 40	52 Ø x 67

### SCHNAPP-VERSCHLUSS



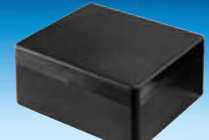
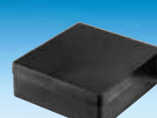
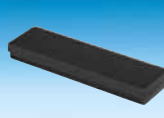
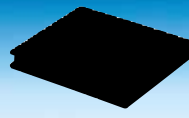
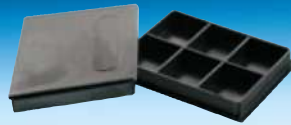
Art.-Nr.	<b>V 20-200 ESD</b>	<b>V 20-201 ESD</b>	<b>V 20-202 ESD</b>	<b>V 20-203 ESD</b>	<b>V 20-204 ESD</b>	<b>V 20-205 ESD</b>
Innenmaße	32 x 32 x 8	55 x 39 x 10	66 x 47 x 13	92 x 65 x 17	111 x 78 x 26	134 x 95 x 30

### RECHTECKDOSEN



Art.-Nr.	<b>V 3-4A-6-6-10-10*</b>	<b>V 3-12-6-6-10-10*</b>	<b>V 3-18-6-6-10-10*</b>	<b>V 3-40-6-6-10-10*</b>
Innenmaße	27 x 27 x 12	50 x 30 x 16	57 x 36 x 17	80 x 50 x 27

\*) mit Steckschaum 8 mm Art. Nr. **V3-../9-6-10**



Art.-Nr.	<b>V 6-4-6-6-10-10</b>	<b>V 3-10-6-6-10-10</b>	<b>V 3-53-6-6-10-10</b>	<b>V 3-37-6-6-10-10</b>	<b>V 3-54-6-6-10-10</b>
Innenmaße	6 Fächer je 19 x 15 x 5	49,5 x 39,5 x 5	102 x 25 x 10	75 x 75 x 27	102 x 85 x 47

### STAPELDOSEN



conductive material

◀ Ar.-Nr. Stapeldosen, Stülpdeckel

<b>V 3-16-6-6-10-10</b>	55 x 55 x 25/16 innen
<b>V 3-17-6-6-10-10</b>	55 x 55 x 35/26 innen
<b>V 3-59-6-6-10-10</b>	115 x 55 x 35/26 innen
<b>V 3-61-6-6-10-10</b>	115 x 115 x 55/46 innen

Ar.-Nr. Stapeldosen, Scharnierdeckel ▶

<b>V 8-1-6-6-10-10</b>	75 x 50 x 33 innen
<b>V 8-2-6-6-10-10</b>	75 x 50 x 45 innen
<b>V 8-5-6-6-10-10</b>	106 x 75 x 46 innen
<b>V 8-7-6-6-10-10</b>	156 x 106 x 46 innen

EGB-Schaumstoffeinlagen auf Anfrage

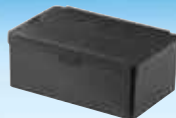
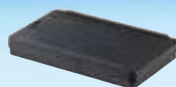


Leitfähiges Material

### SCHARNIERBOXEN



conductive material



Art.-Nr.	<b>V 20-29-6-10</b>	<b>V 20-30-6-10</b>	<b>V 20-31-6-10</b>	<b>V 20-32-6-10</b>	<b>V 20-33-6-10</b>
Innenmaße	130 x 80 x 14	130 x 80 x 30	130 x 80 x 50	178 x 133 x 78	221 x 121 x 55