

MATERIAL

Aluminium, matte finish.
AISI 304 stainless steel screws and nuts.

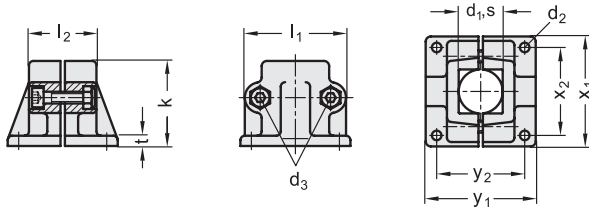
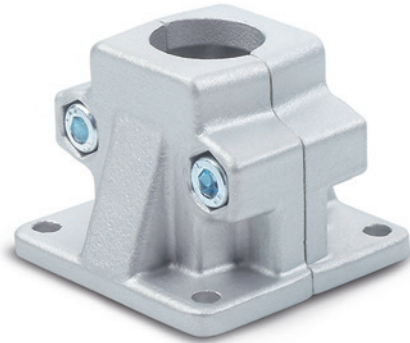
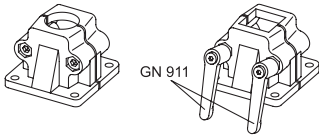
STANDARD EXECUTIONS

- **GN 165-BL**: natural aluminium.
- **GN 165-SW**: aluminium, epoxy resin coating, RAL 9005 black colour.

FEATURES AND APPLICATIONS

The assembly hole of GN 165 connecting clamps allows an excellent match with tubes GN 990 (see page 1778).

The clamping screws d_3 may be replaced by clamping kits GN 911 (see page 1782).



Code BL	Code SW	Description	d1 Hole	s Square hole	d2	d3	k	l1	l2	t	x1	x2	y1	y2	d3 Clamping kit	
GN.49011	GN.49016	GN 165-B20-2-*	20	-	7	M8	58	69	46	7	75	60	75	60	GN 911-M8-40	300
GN.49031	GN.49036	GN 165-B25-2-*	25	-	7	M8	58	69	46	7	75	60	75	60	GN 911-M8-40	296
GN.49051	GN.49056	GN 165-B30-2-*	30	-	7	M8	58	69	46	7	75	60	75	60	GN 911-M8-40	282
GN.49071	GN.49076	GN 165-B40-2-*	40	-	11	M10	91	98	70	14	115	90	119	90	GN 911-M10-63	945
GN.49091	GN.49096	GN 165-B42-2-*	42	-	11	M10	91	98	70	14	115	90	119	90	GN 911-M10-63	905
GN.49111	GN.49116	GN 165-B45-2-*	45	-	11	M10	91	98	70	14	115	90	119	90	GN 911-M10-63	878
GN.49131	GN.49136	GN 165-B48-2-*	48	-	11	M10	91	98	70	14	115	90	119	90	GN 911-M10-63	840
GN.49151	GN.49156	GN 165-B50-2-*	50	-	11	M10	91	98	70	14	115	90	119	90	GN 911-M10-63	810
GN.49211	GN.49216	GN 165-V20-2-*	-	20x20	7	M8	58	69	46	7	75	60	75	60	GN 911-M8-40	298
GN.49231	GN.49236	GN 165-V25-2-*	-	25x25	7	M8	58	69	46	7	75	60	75	60	GN 911-M8-40	286
GN.49251	GN.49256	GN 165-V30-2-*	-	30x30	7	M8	58	69	46	7	75	60	75	60	GN 911-M8-40	270
GN.49271	GN.49276	GN 165-V40-2-*	-	40x40	11	M10	91	98	70	14	115	90	119	90	GN 911-M10-63	920
GN.49291	GN.49296	GN 165-V45-2-*	-	45x45	11	M10	91	98	70	14	115	90	119	90	GN 911-M10-63	885
GN.49311	GN.49316	GN 165-V50-2-*	-	50x50	11	M10	91	98	70	14	115	90	119	90	GN 911-M10-63	840

* Complete the description of the standard item needed by adding the finish of the connector clamps: BL (blank) or SW (black).

