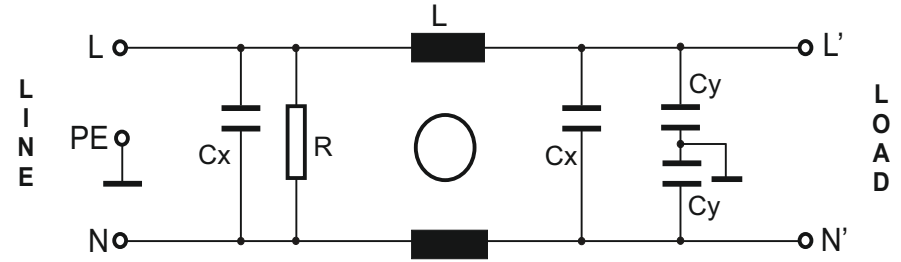
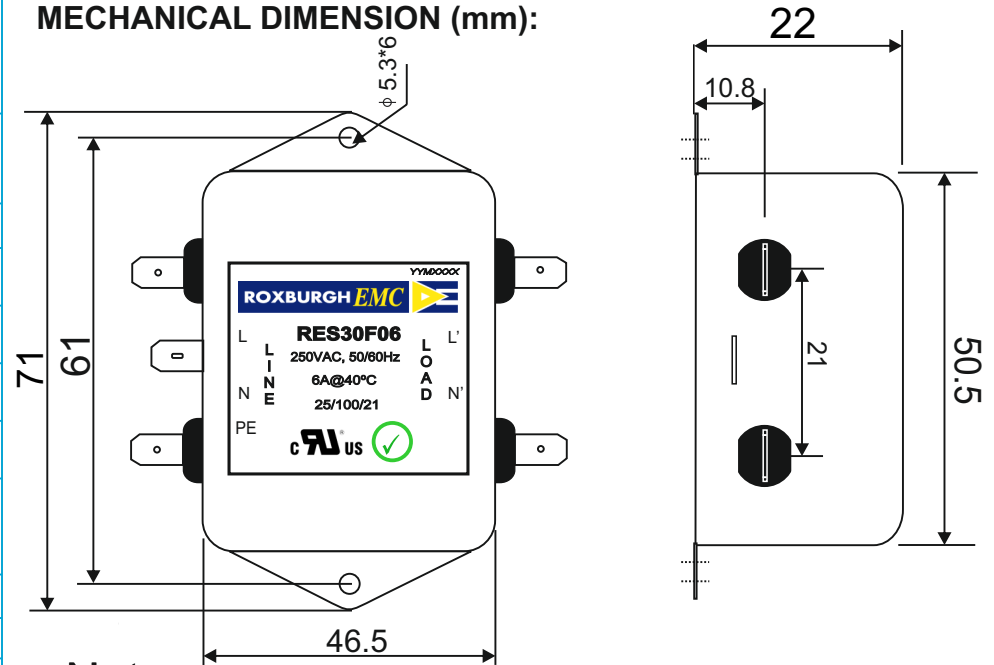


<b>RES30F06</b>	<b>Rev. 0</b>
<b>CHARACTERISTICS:</b>	
Rated Voltage:	250VAC max
Rated Current at Ambient:	6A @ 40°C
Operating Frequency:	DC-400Hz
Climatic Class (IEC60068-1):	25/100/21
Temperature Range:	-25°C to +100°C
Over load Current:	1.5 x Rated Ct. for 1 Min
Operational Leakage current : ( at 230VAC and Total C +/-20%)	0.74 mA max
Worst case Leakage current : ( N interrupted and Total C +/-20%)	<1.5 mA max
DCR @ 25°C (+/-25%) :	100 mΩ
Test Voltage (100%) for 2 sec:-	
P-P:	1500VDC
P-GND:	3000VDC
Ingress Protection:	IP 20
Weight (Approximate):	120 gr
<b>FILTER PARAMETERS:</b>	
Total Inductance (P-P'+N-N') @10KHz:	8mH +50%,-30%
Total Capacitance (P-P/P-N) @1KHz:	0.94μF +/- -20%
Total Capacitance (P/N-GND) @1KHz:	9.4nF +/- -20%
Total Resistance (P-P/P-N):	680K Ω +/- -10%
Total Resistance (P/N-GND):	
<b>APPROVALS:</b> REACH RoHS UL	APPROVED By Ajay Date: 25-03-2014

**CIRCUIT DIAGRAM:**



**MECHANICAL DIMENSION (mm):**



**Note:**

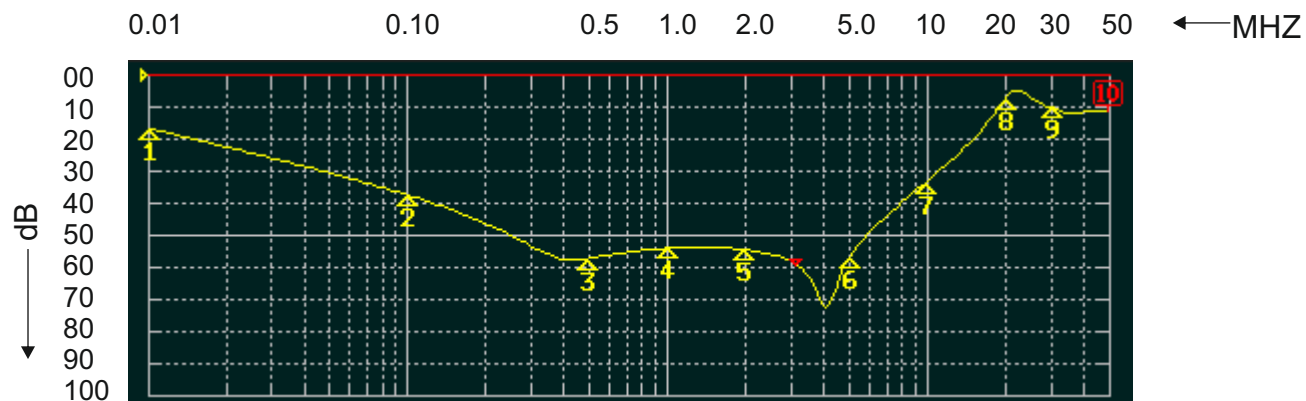
Housing matl. Fe with Ni Plated  
Fast-On Terminal ( 6.38 x 0.8mm)  
Connections

TOLERANCE: +/-1.0 mm

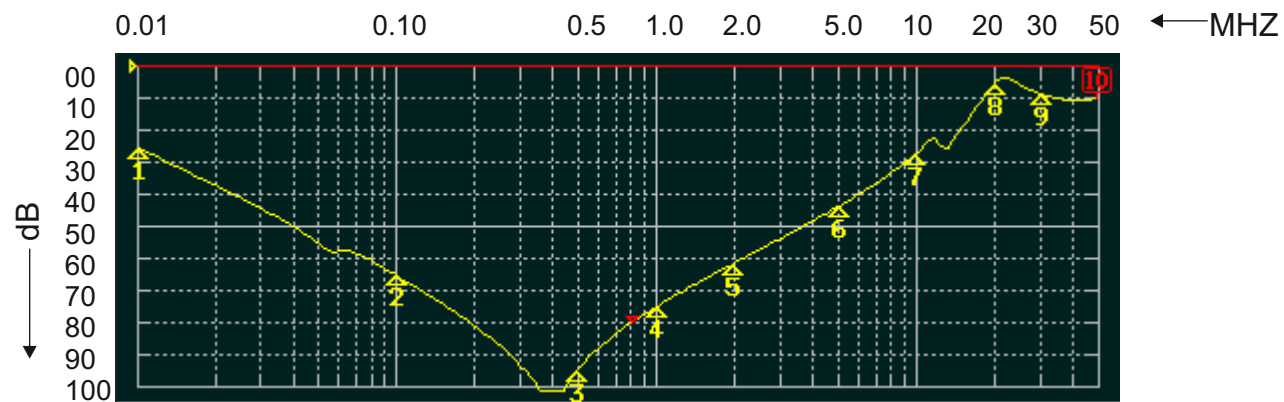


**ROXBURGH EMC**  
FILTER INSERTION LOSS CHARACTERISTICS  
CISPR 17 - 50 OHM METHOD

**RES30F06**



COMMON MODE



DIFFERENTIAL MODE

