

JST

Hand crimping tool
Type: WC-750

Features

Parallel action
operation

Ratchet release

Easy readjustment
of load

Contact locator with
insulation-stop

Precisely ground
profiles

Ergonomic soft grips
colour: green

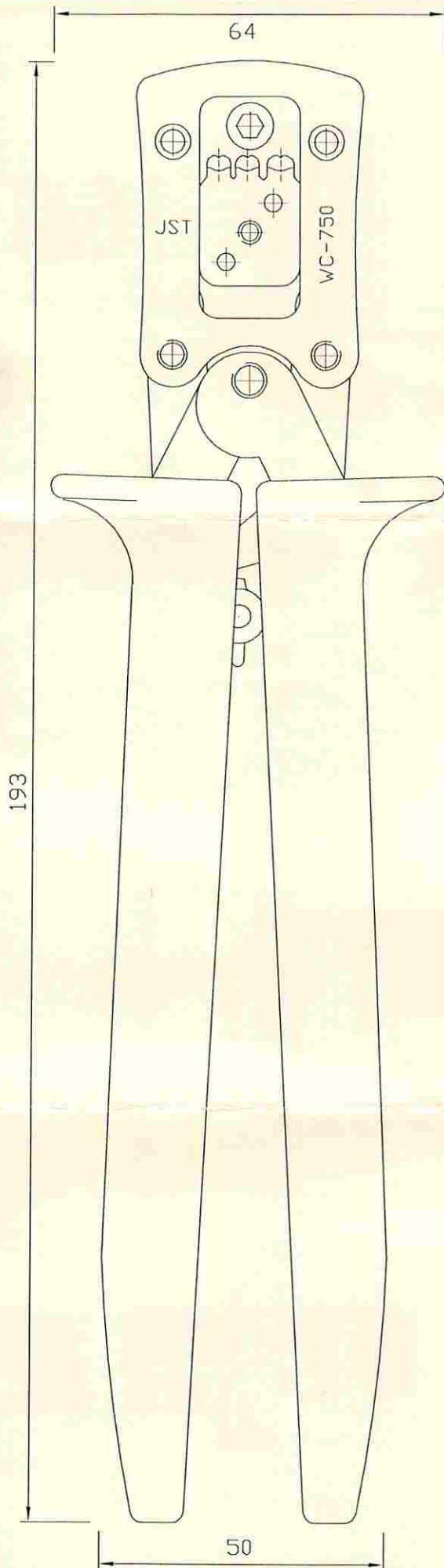
Fully recyclable

Applicable terminal:
()PS-41T-110

Cross section range:
Profile 1: 0.5mm²
Profile 2: 0.75mm²
Profile 3: 1.25mm²

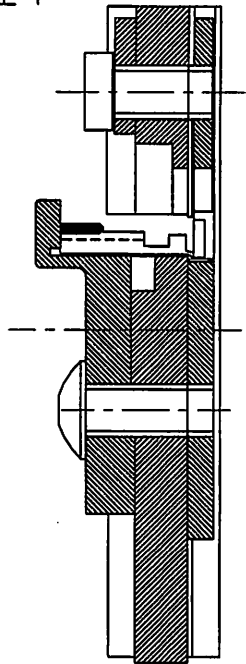
Crimp height specification
0.5mm² - 1.05mm
0.75mm² - 1.20mm
1.25mm² - 1.35mm

Operating instructions see overleaf



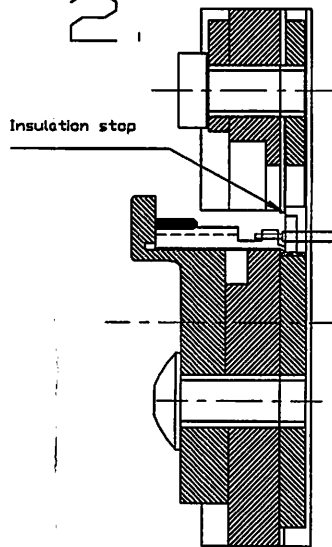
OPERATION INSTRUCTIONS

1.



1. Locate terminal up to stop.

2.

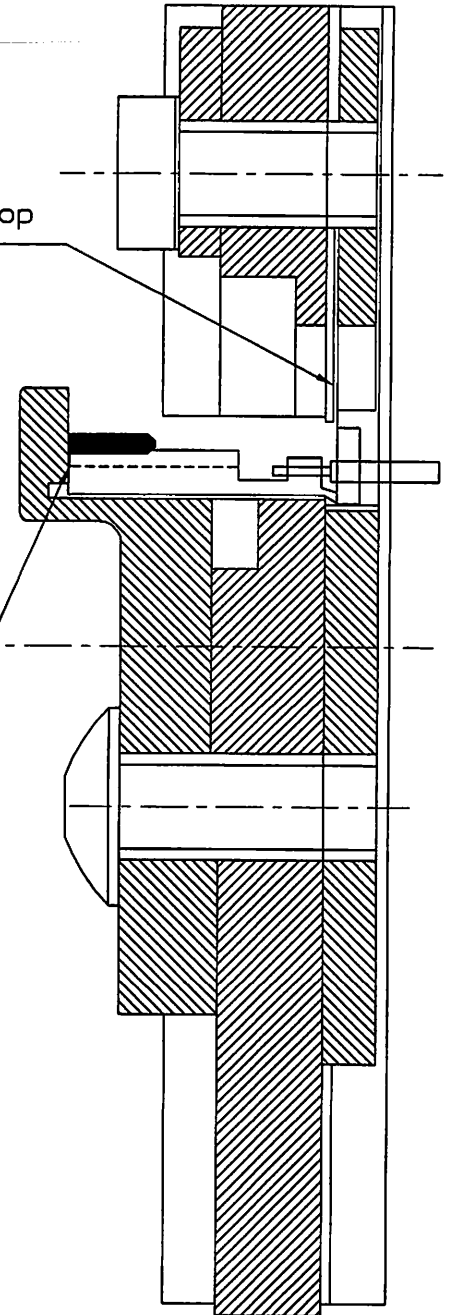


2. Close handtool until first ratchet.

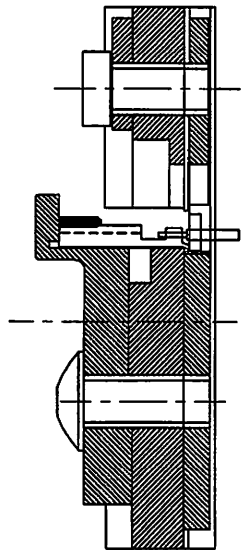
3. Insert wire up to stop.

Terminal stop

Insulation stop



3.



4. Close handtool until the ratchet releases.

5. Carefully remove the wire.