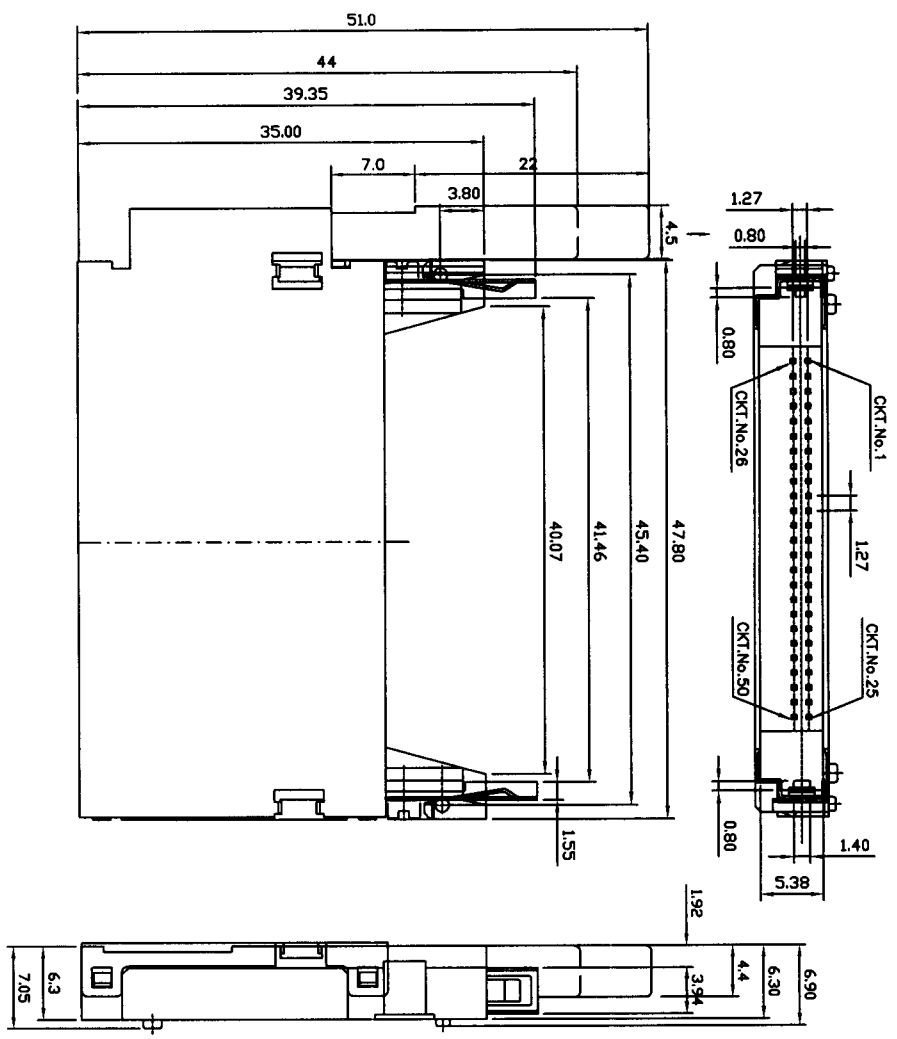


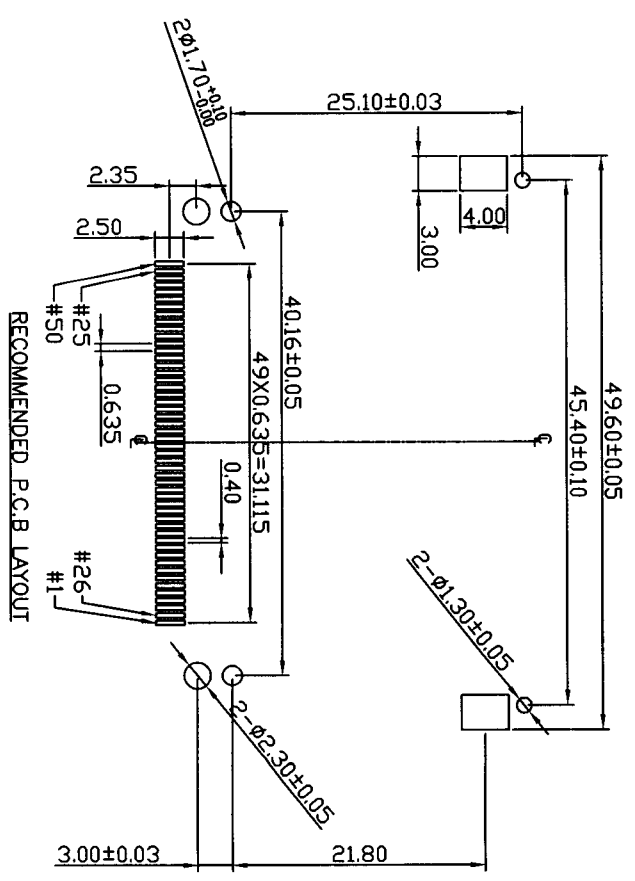
THE INFORMATION CONTAINED IN THIS DRAWING IS THE SOLE PROPERTY OF YAMAICHI ELECTRONICS DEUTSCHLAND GmbH. ANY REPRODUCTION IN PART OR WHOLE WITHOUT THE WRITTEN PERMISSION OF YAMAICHI ELECTRONICS DEUTSCHLAND GmbH IS PROHIBITED.



POWER	5.00mm
GENERAL	4.25mm
DETECT	3.50mm
Pin type	Interface Dim. L

Drawing 1.D · CF050-P2

Rev.No.	Revision Description	Drw. App.	Date
C	Specification Change	SAK SAK	26/10/00
D	Part number change	SAK SAK	05/12/00
E	Design change	SAK SAK	11/01/01
F	Dimension additions	SAK SAK	05/02/01
G	Stand-off / Part no.	SAK SAK	19/03/01
H	Dimension changes	SAK SAK	29/05/01
J	Recommended PCB layout	SAK SAK	30/08/01



RECOMMENDED P.C.B LAYOUT

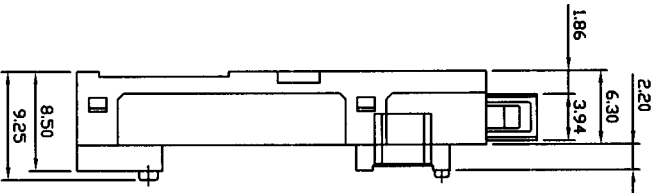
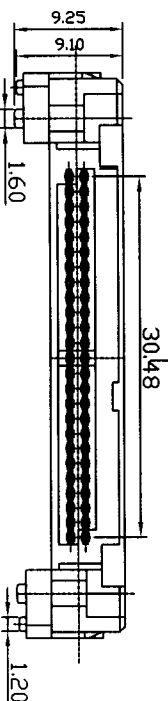
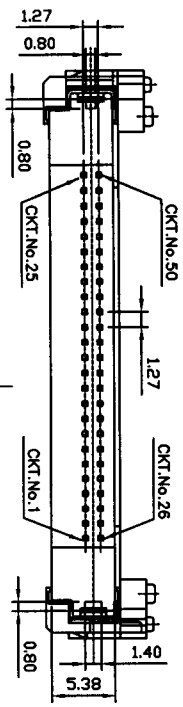
Notes:  
Tolerances ±0.3 unless otherwise specified.

For ordering code and engineering notes, see drawing P(039)A02, sheet 2/2.

Scale:	%	APP	APP	CHK	DRW.	DSGN.	Title: Compact Flash Adapter Type I & II	
Dimension:	mm	09/1/99	09/1/99	09/1/99	09/1/99	09/1/99	90° SMT type, male, ejector version	
Angle Proj.:		PA	WMM	SAK	SAK	SAK	Drawing No.: P(039)A02	
							Sheet No.: 1/2	
							Rev: J	



THE INFORMATION CONTAINED IN THIS DRAWING IS THE SOLE PROPERTY OF YAMACHI ELECTRONICS DEUTSCHLAND GmbH. ANY REPRODUCTION IN PART OR WHOLE WITHOUT THE WRITTEN PERMISSION OF YAMACHI ELECTRONICS DEUTSCHLAND GmbH IS PROHIBITED.



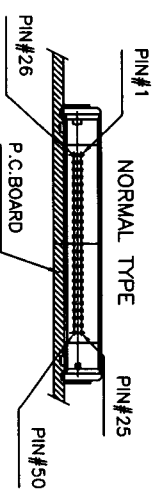
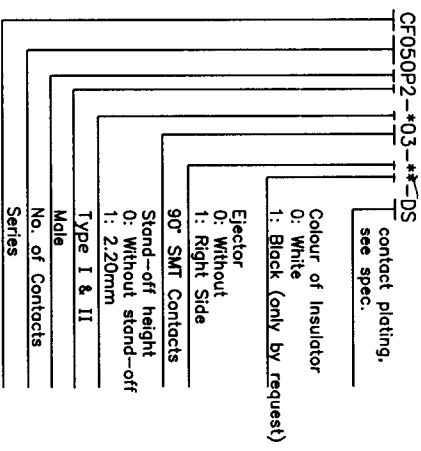
POWER	5.00mm
GENERAL	4.25mm
DETECT	3.50mm
Pin type	Interface Dim. L

**SPECIFICATION**

Insulation Resistance: 1000MΩ at 500V DC  
 Withstanding Voltage: 500V AC for 1 Minute  
 Voltage Rating: 100V max.  
 Current Rating: 1A AC/DC max.  
 Contact Resistance: 40mΩ max. at 20mV max./10mA max.  
 Operating Temperature Range: -20°C ~ +90°C  
 Reflow Solder Temperature: 235°C max. for 3 sec.  
 Mating Cycles: 10,000

**MATERIAL**

Insulator: Glass Reinforced LCP UL94V-0  
 Push button: Glass Reinforced PBT UL94V-0  
 Cover: Stainless Steel  
 Contacts: Brass  
 Mount eor: Brass ; Tin plated overall  
 CONTACT PLATING  
 Contact area: Gold flash plating over 40u" Nickel  
 Solder tail area: 100u" tin plating over 40u" Nickel  
 PART NUMBER: CF050P2-\*03-\*--DS



**Notes:**  
 Tolerances ±0.3 unless otherwise specified.  
 For PCB Layout, see Drawing P(039)A02, sheet 1/2



Drawing I.D.: CF050-P2,  
 752D-50AX20X11

Scale:	%	APP.	APP.	CHK.	DRW.	DSCN.	Classification:	CF050P2*03-*--DS
Dimension:	mm	09/11/99	09/11/99	09/11/99	09/11/99	09/11/99	Title:	Compact Flash Adapter Type I & II
Angle Proj.:	PA	WM	SAK	SAK	SAK	SAK	Drawing No.:	P(039)A02
							Sheet No.:	2/2
							Rev.:	J