

- 1
- 2
- 3
- 4
- 5
- 6
- 7
- 8
- 9
- 10
- 11
- 12
- 13
- 14
- 15
- 16
- 17
- 18**

MATERIAL

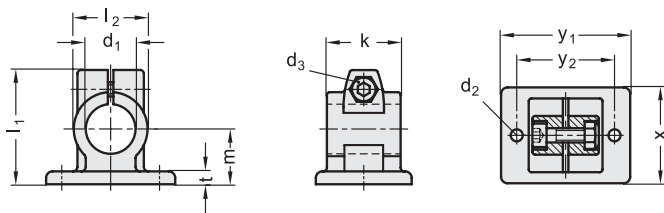
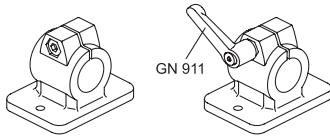
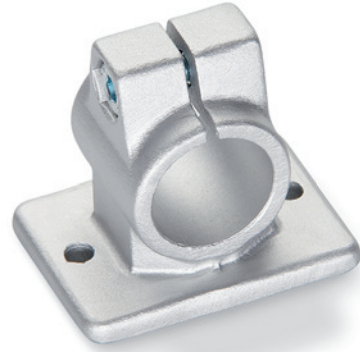
Aluminium, matte finish.
AISI 304 stainless steel screws and nuts.

STANDARD EXECUTIONS

- **GN 146.3-BL**: natural aluminium.
- **GN 146.3-SW**: aluminium, epoxy resin coating, RAL 9005 black colour.

FEATURES AND APPLICATIONS

The assembly hole of GN 146.3 connecting clamps allows an excellent match with tubes GN 990 (see page 1778).
The clamping screws d₃ may be replaced by clamping kits GN 911 (see page 1782).



GN 146.3-BL

Code	Description	d1	d2	d3	k	l1	l2	m	t	x	y1	y2	d ₃ Clamping kit	⚖️
GN.46711	GN 146.3-B20-40-2-BL	20	6.5	M8	40	62	40	30	7	52	70	53	GN 911-M8-32	180
GN.46731	GN 146.3-B25-40-2-BL	25	6.5	M8	40	62	40	30	7	52	70	53	GN 911-M8-32	180
GN.46751	GN 146.3-B30-40-2-BL	30	6.5	M8	40	62	40	30	7	52	70	53	GN 911-M8-32	160
GN.46771	GN 146.3-B30-56-2-BL	30	8.5	M10	56	83	56	42	10	78	108	82	GN 911-M10-40	510
GN.46791	GN 146.3-B32-56-2-BL	32	8.5	M10	56	83	56	42	10	78	108	82	GN 911-M10-40	480
GN.46811	GN 146.3-B35-56-2-BL	35	8.5	M10	56	83	56	42	10	78	108	82	GN 911-M10-40	480
GN.46831	GN 146.3-B40-56-2-BL	40	8.5	M10	56	83	56	42	10	78	108	82	GN 911-M10-40	440

GN 146.3-SW

Code	Description	d1	d2	d3	k	l1	l2	m	t	x	y1	y2	d ₃ Clamping kit	⚖️
GN.46716	GN 146.3-B20-40-2-SW	20	6.5	M8	40	62	40	30	7	52	70	53	GN 911-M8-32	180
GN.46736	GN 146.3-B25-40-2-SW	25	6.5	M8	40	62	40	30	7	52	70	53	GN 911-M8-32	180
GN.46756	GN 146.3-B30-40-2-SW	30	6.5	M8	40	62	40	30	7	52	70	53	GN 911-M8-32	160
GN.46776	GN 146.3-B30-56-2-SW	30	8.5	M10	56	83	56	42	10	78	108	82	GN 911-M10-40	510
GN.46796	GN 146.3-B32-56-2-SW	32	8.5	M10	56	83	56	42	10	78	108	82	GN 911-M10-40	480
GN.46816	GN 146.3-B35-56-2-SW	35	8.5	M10	56	83	56	42	10	78	108	82	GN 911-M10-40	480
GN.46836	GN 146.3-B40-56-2-SW	40	8.5	M10	56	83	56	42	10	78	108	82	GN 911-M10-40	440

Connecting clamps