

GN 274 | Pivoting connecting clamps

Aluminium



- 1
- 2
- 3
- 4
- 5
- 6
- 7
- 8
- 9
- 10
- 11
- 12
- 13
- 14
- 15
- 16
- 17
- 18

MATERIAL

Aluminium, matte finish.
AISI 304 stainless steel screws and nuts.

STANDARD EXECUTIONS

- **GN 274-BL-OZ**: natural aluminium.
- **GN 274-BL-MZ**: natural aluminium, with embossed centering ring.
- **GN 274-BL-AV**: natural aluminium, with embossed toothing.
- **GN 274-BL-IV**: natural aluminium, with flush toothing.
- **GN 274-SW-OZ**: aluminium, epoxy resin coating, RAL 9005 black colour.
- **GN 274-SW-MZ**: aluminium, epoxy resin coating, RAL 9005 black colour, with embossed centering ring.
- **GN 274-SW-AV**: aluminium, epoxy resin coating, RAL 9005 black colour, with embossed toothing.
- **GN 274-SW-IV**: aluminium, epoxy resin coating, RAL 9005 black colour, with flush toothing.



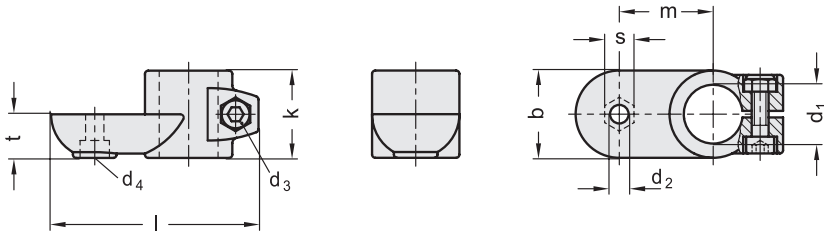
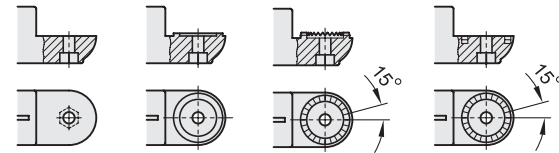
FEATURES AND APPLICATIONS

The assembly hole of GN 274 connecting clamps allows an excellent match with tubes GN 990 (see page 1778).

GN 274 connecting clamps can be assembled with connecting clamps GN 272 (see page 1752), GN 276 (see page 1758) or GN 278 (see page 1760).

The clamping screws d3 may be replaced by clamping kits GN 911 (see page 1782).

GN 274-OZ GN 274-MZ GN 274-AV GN 274-IV



GN 274-BL-OZ GN 274-SW-OZ

Code BL	Code SW	Description	b	d1	d2	d3	d4	k	l	m	t	s	d3 Clamping kit	⚖️
GN.57871	GN.57876	GN 274-B20-OZ-2-*	40	20	8.5	M8	M8	40	95	43	20	13	GN 911-M8-32	190
GN.57951	GN.57956	GN 274-B25-OZ-2-*	40	25	8.5	M8	M8	40	95	43	20	13	GN 911-M8-32	170
GN.58031	GN.58036	GN 274-B30-OZ-2-*	40	30	8.5	M8	M8	40	95	43	20	13	GN 911-M8-32	150
GN.58111	GN.58116	GN 274-B40-OZ-2-*	65	40	10.5	M10	M10	65	148	70	32.5	17	GN 911-M10-55	710
GN.58191	GN.58196	GN 274-B42-OZ-2-*	65	42	10.5	M10	M10	65	148	70	32.5	17	GN 911-M10-55	685
GN.58271	GN.58276	GN 274-B45-OZ-2-*	65	45	10.5	M10	M10	65	148	70	32.5	17	GN 911-M10-55	650
GN.58351	GN.58356	GN 274-B48-OZ-2-*	65	48	10.5	M10	M10	65	148	70	32.5	17	GN 911-M10-55	610
GN.58431	GN.58436	GN 274-B50-OZ-2-*	65	50	10.5	M10	M10	65	148	70	32.5	17	GN 911-M10-55	585

* Complete the description of the standard item needed by adding the finish of the connector clamps: BL (blank) or SW (black).

**GN 274-BL-MZ GN 274-SW-MZ**

Code BL	Code SW	Description	b	d1	d2	d3	d4	k	l	m	t	s	d3 Clamping kit	⚖️
GN.57851	GN.57856	GN 274-B20-MZ-2-*	40	20	8.5	M8	M8	40	95	43	20	13	GN 911-M8-32	190
GN.57931	GN.57936	GN 274-B25-MZ-2-*	40	25	8.5	M8	M8	40	95	43	20	13	GN 911-M8-32	170
GN.58011	GN.58016	GN 274-B30-MZ-2-*	40	30	8.5	M8	M8	40	95	43	20	13	GN 911-M8-32	150
GN.58091	GN.58096	GN 274-B40-MZ-2-*	65	40	10.5	M10	M10	65	148	70	32.5	17	GN 911-M10-55	700
GN.58171	GN.58176	GN 274-B42-MZ-2-*	65	42	10.5	M10	M10	65	148	70	32.5	17	GN 911-M10-55	690
GN.58251	GN.58256	GN 274-B45-MZ-2-*	65	45	10.5	M10	M10	65	148	70	32.5	17	GN 911-M10-55	655
GN.58331	GN.58336	GN 274-B48-MZ-2-*	65	48	10.5	M10	M10	65	148	70	32.5	17	GN 911-M10-55	615
GN.58411	GN.58416	GN 274-B50-MZ-2-*	65	50	10.5	M10	M10	65	148	70	32.5	17	GN 911-M10-55	585

GN 274-BL-AV GN 274-SW-AV

Code BL	Code SW	Description	b	d1	d2	d3	d4	k	l	m	t	s	d3 Clamping kit	⚖️
GN.57811	GN.57816	GN 274-B20-AV-2-*	40	20	8.5	M8	M8	40	95	43	20	13	GN 911-M8-32	185
GN.57891	GN.57896	GN 274-B25-AV-2-*	40	25	8.5	M8	M8	40	95	43	20	13	GN 911-M8-32	170
GN.57971	GN.57976	GN 274-B30-AV-2-*	40	30	8.5	M8	M8	40	95	43	20	13	GN 911-M8-32	150
GN.58051	GN.58056	GN 274-B40-AV-2-*	65	40	10.5	M10	M10	65	148	70	32.5	17	GN 911-M10-55	710
GN.58131	GN.58136	GN 274-B42-AV-2-*	65	42	10.5	M10	M10	65	148	70	32.5	17	GN 911-M10-55	690
GN.58211	GN.58216	GN 274-B45-AV-2-*	65	45	10.5	M10	M10	65	148	70	32.5	17	GN 911-M10-55	655
GN.58291	GN.58296	GN 274-B48-AV-2-*	65	48	10.5	M10	M10	65	148	70	32.5	17	GN 911-M10-55	620
GN.58371	GN.58376	GN 274-B50-AV-2-*	65	50	10.5	M10	M10	65	148	70	32.5	17	GN 911-M10-55	585

GN 274-BL-IV GN 274-SW-IV

Code BL	Code SW	Description	b	d1	d2	d3	d4	k	l	m	t	s	d3 Clamping kit	⚖️
GN.57831	GN.57836	GN 274-B20-IV-2-*	40	20	8.5	M8	M8	40	95	43	20	13	GN 911-M8-32	180
GN.57911	GN.57916	GN 274-B25-IV-2-*	40	25	8.5	M8	M8	40	95	43	20	13	GN 911-M8-32	160
GN.57991	GN.57996	GN 274-B30-IV-2-*	40	30	8.5	M8	M8	40	95	43	20	13	GN 911-M8-32	140
GN.58071	GN.58076	GN 274-B40-IV-2-*	65	40	10.5	M10	M10	65	148	70	32.5	17	GN 911-M10-55	690
GN.58151	GN.58156	GN 274-B42-IV-2-*	65	42	10.5	M10	M10	65	148	70	32.5	17	GN 911-M10-55	665
GN.58231	GN.58236	GN 274-B45-IV-2-*	65	45	10.5	M10	M10	65	148	70	32.5	17	GN 911-M10-55	635
GN.58311	GN.58316	GN 274-B48-IV-2-*	65	48	10.5	M10	M10	65	148	70	32.5	17	GN 911-M10-55	610
GN.58391	GN.58396	GN 274-B50-IV-2-*	65	50	10.5	M10	M10	65	148	70	32.5	17	GN 911-M10-55	570

* Complete the description of the standard item needed by adding the finish of the connector clamps: BL (blank) or SW (black).