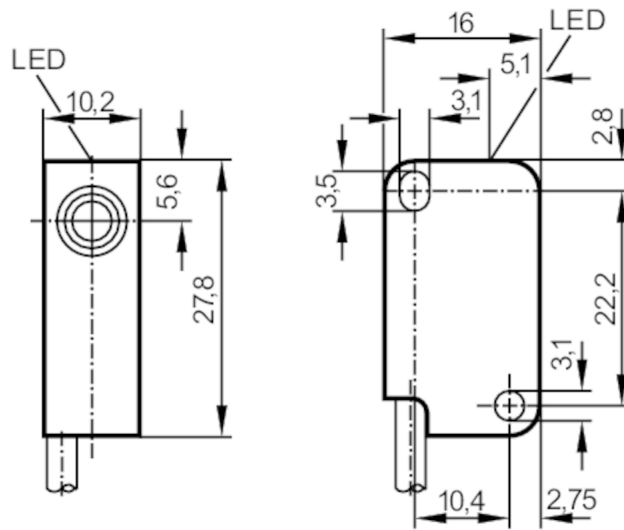


# IS5005



## Inductive sensor

IS-3002-BPKG/6M



### Product characteristics

Electrical design		PNP
Output function		normally open
Sensing range	[mm]	2
Housing		rectangular
Dimensions	[mm]	27.8 x 10.2 x 16

### Electrical data

Operating voltage	[V]	10...30 DC
Current consumption	[mA]	< 15
Protection class		III
Reverse polarity protection		yes

### Outputs

Electrical design		PNP
Output function		normally open
Max. voltage drop switching output DC	[V]	2.5
Permanent current rating of switching output DC	[mA]	200
Switching frequency DC	[Hz]	800
Short-circuit protection		yes
Overload protection		yes

### Detection zone

Sensing range	[mm]	2
Real sensing range Sr	[mm]	2 ± 10 %
Operating distance	[mm]	0...1.62
Increased sensing range		no

# IS5005



## Inductive sensor

IS-3002-BPKG/6M

Accuracy / deviations		
Correction factor		steel: 1 / stainless steel: 0.7 / brass: 0.4 / aluminium: 0.3 / copper: 0.2
Hysteresis	[% of Sr]	1...15
Switch point drift	[% of Sr]	-10...10
Operating conditions		
Ambient temperature	[°C]	0...50
Protection		IP 67
Tests / approvals		
EMC	EN 61000-4-2 ESD	4 kV CD / 15 kV AD
	EN 61000-4-3 HF radiated	10 V/m
	EN 61000-4-4 Burst	2 kV
	EN 61000-4-6 HF conducted	10 V
	EN 55011	class B
MTTF	[years]	3044
Mechanical data		
Weight	[g]	130
Housing		rectangular
Mounting		flush mountable
Dimensions	[mm]	27.8 x 10.2 x 16
Materials		housing: PBT; cover: PBT
Tightening torque	[Nm]	< 0.5; (with washer)
Displays / operating elements		
Display	switching status	1 x LED, yellow
Remarks		
Pack quantity		1 pcs.

# IS5005



## Inductive sensor

IS-3002-BPKG/6M

### Electrical connection

Cable: 6 m, PVC, Ø 3.5 mm; 3 x 0.14 mm<sup>2</sup>

### Connection



#### Core colours

BK	black
BN	brown
BU	blue