



AC1200 Wireless Dual Band Router

Four Antennas for Faster AC
Wi-Fi and Greater Coverage



Archer C50



300Mbps + 867Mbps
Dual Band Wi-Fi



4 × 5dBi
Antennas

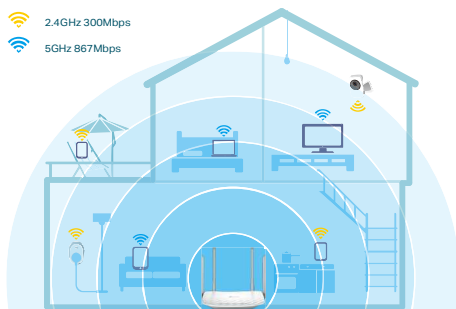


Access Point
Mode

Highlights

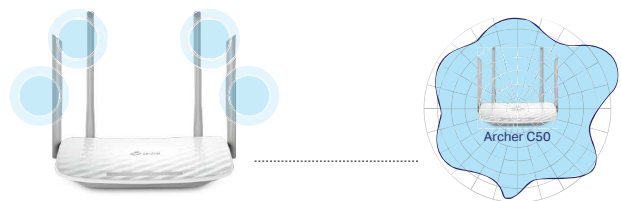
Household Wi-Fi at Streaming Speeds

Press play and forget about buffering with the Archer C50. The Wireless AC router creates high-speed AC1200 Wi-Fi so you can game online and watch movies in HD at the same time. Thanks to dual Wi-Fi bands, you can run more of your devices at the same time without interruption. The strong 2.4GHz (300Mbps) Wi-Fi band is perfect for sending emails, browsing the web, and listening to music. The crystal 5GHz Wi-Fi band reaches 867Mbps so you can game online and stream in HD simultaneously.



Innovative Antenna Design for Maximum Coverage

Four antennas make all of your connections more efficient and stable. Advanced antenna technology increases the receiving sensitivity to enlarge Wi-Fi coverage for your home.



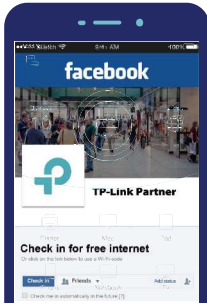
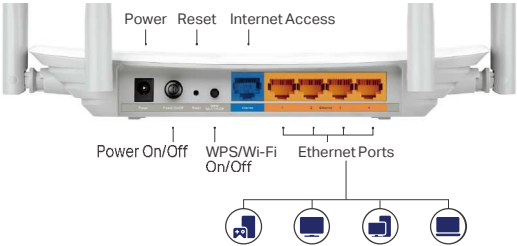
Highlights

Fast Ethernet

Enjoy fast, reliable wired connections for gaming and streaming in the best quality.

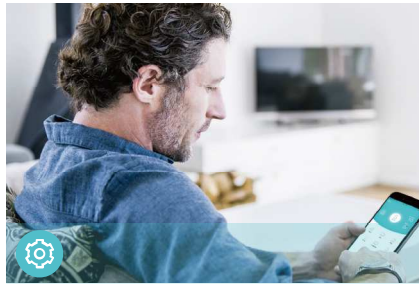
Facebook Wi-Fi: Efficient Guest Authentication

Captive portal presents devices with a convenient, user-friendly authentication method to grant Wi-Fi access. Easily share your facebook page to anyone who connects to your network.



TP-Link AC1200 Wireless Dual Band Router Archer C50

Features



Reliability

- **Ultimate Wireless Speed** – 300Mbps Wi-Fi speed on 2.4GHz and 867Mbps Wi-Fi speed on 5GHz meet your daily internet needs
- **Support 802.11 ac** – Provide a data transfer rate 3 times faster than 802.11n for each stream
- **Bandwidth Control** – Assign your preferred devices with more bandwidth
- **IPTV** – Support IGMP Proxy/Snooping, Bridge and Tag VLAN to optimize IPTV streaming

Ease of Use

- **Intuitive Web UI** – Ensure quick and simple installation without hassle
- **Fast Encryption** – Make secure wireless connection quickly and easily with the push of a WPS button
- **Hassle-free Management with Tether App** – Let you manage your network settings with your smartphone
- **Facebook Wi-Fi** – Provide efficient guest authentication and share your Facebook page to anyone who connects to your Wi-Fi.

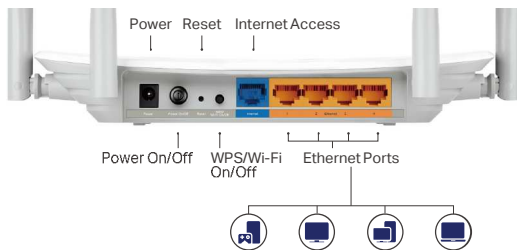
Security

- **Active Defense** – WPA-PSK/WPA2-PSK encryptions provide active protection against security threats
- **Guest Network** – Provide separate access for guests while securing the home network
- **Access Control** – Establish a whitelist or blacklist to allow or block certain devices from accessing the internet
- **Parental Controls** – Manage when and how connected devices can access the internet

Specifications

Hardware

- **Ethernet Ports:** 4*10/100Mbps LAN Ports, 1*10/100Mbps WAN Port
- **Buttons:** Reset Button, Power On/Off Button, WPS/Wi-Fi On/Off Button
- **Antennas:** 4 Fixed Omni Directional Antennas
- **External Power Supply:** 9VDC/0.85A
- **Dimensions (W x D x H):** 9.1 x 5.7 x 1.4 in. (230 x 144 x 35mm)



Wireless

- **Wireless Standards:** IEEE 802.11ac/n/a 5GHz, IEEE 802.11b/g/n 2.4GHz
- **Frequency:** 2.4GHz and 5GHz
- **Signal Rate:**
 - 5GHz: Up to 867Mbps
 - 2.4GHz: Up to 300Mbps
- **Reception Sensitivity:**
 - 5G:
 - 11a 54M:-77dBm;
 - 11ac VHT20 MCS8:-72dBm;
 - 11ac VHT40 MCS9:-68 dBm;
 - 11ac VHT80 MCS9:-63 dBm;
 - 2.4G:
 - 11g 54M:-76 dBm;
 - 11n HT20 MCS7:-74 dBm;
 - 11n HT40 MCS7:-71 dBm;
- **Wireless Function:** Enable/Disable Wireless Radio, WDS Bridge, WMM, Wireless Schedule, Wireless Statistics
- **Wireless Security:** 64/128-bit WEP, WPA / WPA2, WPA-PSK / WPA2-PSK encryption

Specifications

Software

- **WAN Type:** Dynamic IP, Static IP, PPPoE, IPTV, PPTP (Dual Access), L2TP (Dual Access), Bigpond
- **DHCP:** Server, DHCP Client List, Address Reservation
- **Quality of Service:** WMM, Bandwidth Control
- **Port Forwarding:** Virtual Server, Port Triggering, UPnP, DMZ
- **Dynamic DNS:** DynDns, NO-IP, Comexe
- **Access Control:** Parental Controls, Local Management Control, Host List, White List, Black List
- **Firewall Security:** DoS, SPI Firewall, IP Address Filter/MAC Address Filter, IP and MAC Address Binding
- **Protocols:** IPv4, IPv6
- **Management:** Access Control, Local Management, Remote Management
- **Guest Network:** 2.4GHz guest network, 5GHz guest network, Facebook Wi-Fi

Others

- **Certification**
CE, RoHS
- **System Requirements**
Microsoft Windows 10/8.1/8/7/Vista/XP/2000/NT/98SE, MAC OS, NetWare, UNIX or Linux
Internet Explorer 11, Firefox 12.0, Chrome 20.0, Safari 4.0, or other Java-enabled browser
Cable or DSL Modem
Subscription with an internet service provider (for internet access)
- **Environment**
Operating Temperature: 0°C~40°C (32°F ~104°F)
Storage Temperature: -40°C~70°C (-40°F ~158°F)
Operating Humidity: 10%~90% non-condensing
Storage Humidity: 5%~90% non-condensing
- **Package Contents**
Wireless Router Archer C50
Power Adapter
RJ45 Ethernet Cable
Quick Installation Guide



For more information, please visit

<http://www.tp-link.com/en/products/details/Archer-C50.html>

or scan the QR code left

Specifications are subject to change without notice. TP-Link is a registered trademark of TP-Link Technologies Co., Ltd. Other brands and product names are trademarks or registered trademarks of their respective holders. No part of the specifications may be reproduced in any form or by any means or used to make any derivative such as translation, transformation, or adaptation without permission from TP-Link Technologies Co., Ltd. Copyright ©2018 TP-Link Technologies Co., Ltd. All rights reserved.
*Maximum wireless signal rates are the physical rates derived from IEEE Standard 802.11 specifications. Actual wireless data throughput and wireless coverage are not guaranteed and will vary as a result of 1) environmental factors, including building materials, physical objects, and obstacles; 2) network conditions, including local interference, volume and density of traffic, product location, network complexity, and network overhead; and 3) client limitations, including rated performance, location, connection, quality, and client condition.

www.tp-link.com

TP-Link AC1200 Wireless Dual Band Router Archer C50