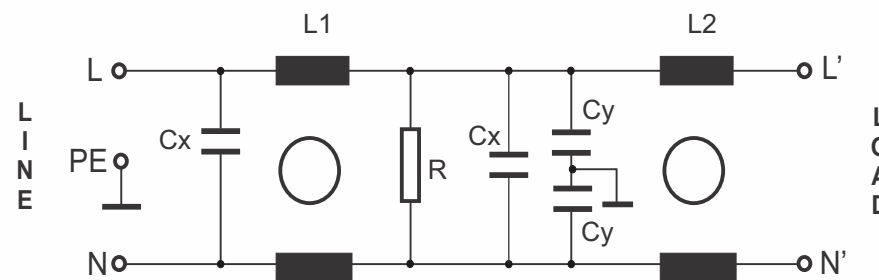
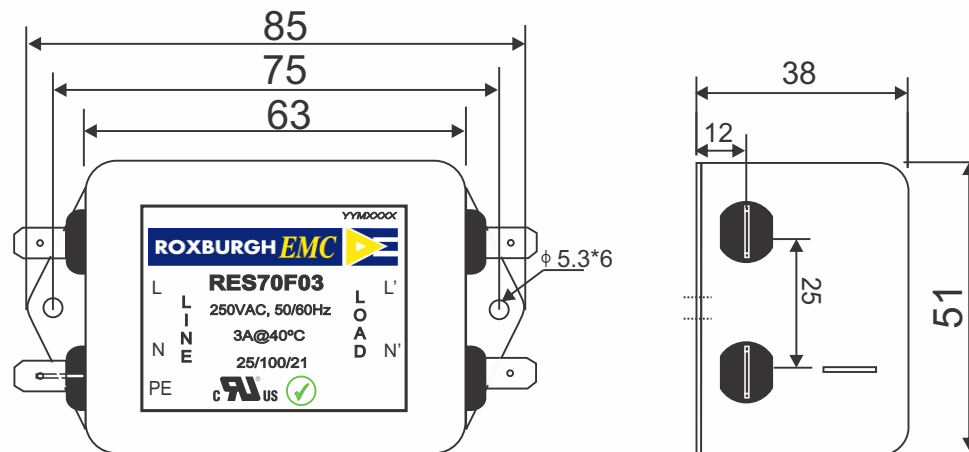


RES70F03	Rev. 0
CHARACTERISTICS:	
Rated Voltage:	250VAC max
Rated Current at Ambient:	3A @ 40°C
Operating Frequency:	DC-400HZ
Climatic Class (IEC60068-1):	25/100/21
Temperature Range:	-25°C to +100°C
Over load Current:	1.5 x Rated Ct. for 1 Min
Operational Leakage current : (at 230VAC/50Hz and Total C +/-20%)	0.734 mA max
Worst case Leakage current : (N interrupted and Total C +/-20%)	<1.101 mA max
DCR @ 25°C (+/-25%) :	325 mΩ
Test Voltage (100%) for 2 sec:-	L-N: 1100VDC L-GND: 3500VDC
Ingress Protection:	IP 20
Weight (Approximate):	250 gr
FILTER PARAMETERS:	
Total Inductance (L-L'+N-N') @10KHz:	19.6mH +50%,-30%
Total Capacitance (L-L/L-N) @1KHz:	0.94μF +/- -20%
Total Capacitance (L/N-GND) @1KHz:	9.4nF +/- 20%
Total Resistance (L-L/L-N):	0.47MΩ +/- -10%
Total Resistance (L/N-GND):	
APPROVALS: REACH RoHS UL	APPROVED BY AJAY Date: 28-03-2014

CIRCUIT DIAGRAM:



MECHANICAL DIMENSION (mm):



Note:

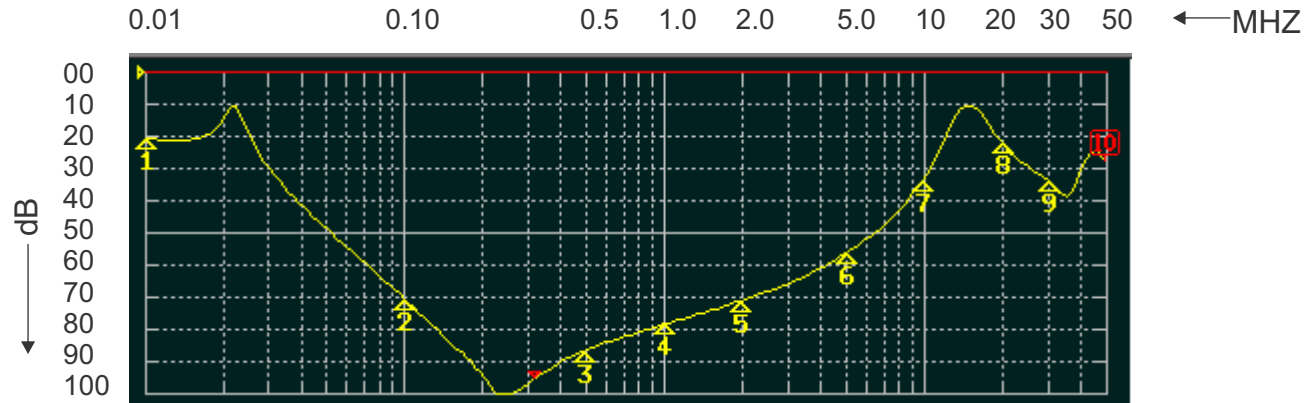
Housing matl. Fe with Ni Plated
Fast-On Terminal (6.3 x 0.8mm)
Connections

TOLERANCE: +/-1.0 mm

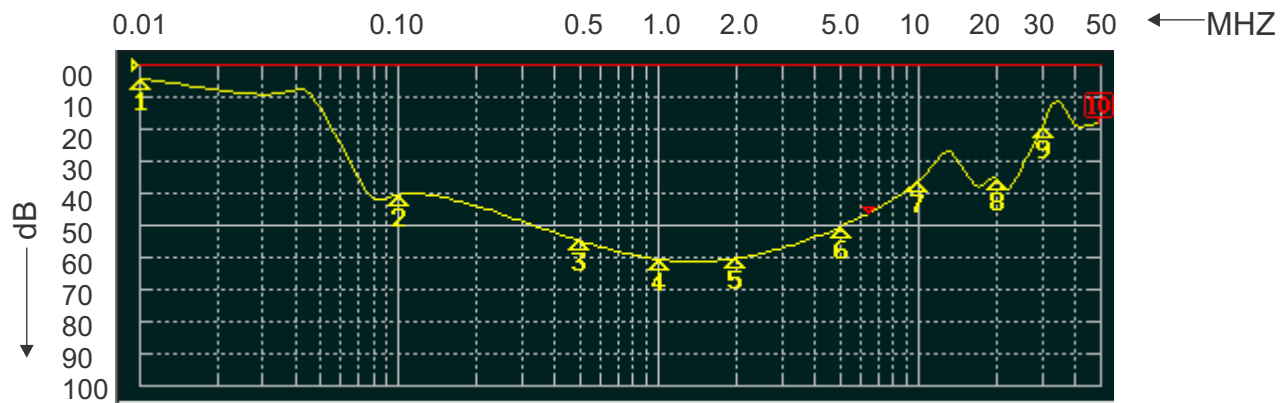


ROXBURGH EMC
FILTER INSERTION LOSS CHARACTERISTICS
CISPR 17 - 50 OHM METHOD

RES70F03



COMMON MODE



DIFFERENTIAL MODE

