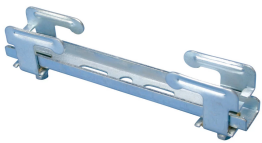




2000 BEAM CLAMP KIT, 7.87"

CATALOG NUMBER

2200EG



FEATURES

Light duty system

Includes clamp and U channel

PRODUCT ATTRIBUTES

Article Number: 570140

Material: Steel

Finish: Electrogalvanized

Length: 200 mm

A: 25 mm

B: 25 mm

C: 65 mm

D: 25 mm

E: 30.5 mm

Static Load 1: 1,700 N

Static Load 2: 490 N

Static Load 3: 340 N

Height: 12 mm

Width: 25 mm

Thickness: 2 mm

Flange Thickness: 11 mm Max

Hole Size: 11 mm

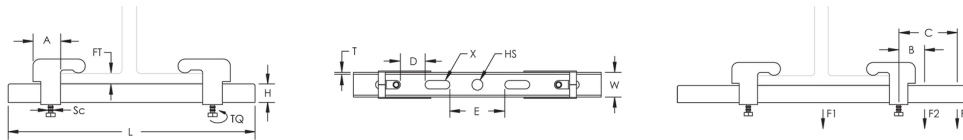
Screw Diameter: M6

Torque: 30 N-m

ADDITIONAL PRODUCT DETAILS

For a secure grip the channel must extend to the outer edge of each beam clamp.

DIAGRAMS



WARNING

nVent products shall be installed and used only as indicated in nVent's product instruction sheets and training materials. Instruction sheets are available at www.nvent.com and from your nVent customer service representative. Improper installation, misuse, misapplication or other failure to completely follow nVent's instructions and warnings may cause product malfunction, property damage, serious bodily injury and death and/or void your warranty.

Noord-Amerika

+1.800.753.9221

Optie 1 - de Zorg van de Klant

Optie 2 - Technische Steun

Europa

Nederland:

+31 800-0200135

Frankrijk:

+33 800 901 793

Europa

Duitsland:

800 1890272

Andere Landen:

+31 13 5835404

APAC

Shanghai:

+ 86 21 2412 1618/19

Sydney:

+61 2 9751 8500



Onze krachtige portefeuille van merken:

nVent.com CADDY ERICO HOFFMAN RAYCHEM SCHROFF TRACER

© nVent 2022. Alle nVent tekens en emblemen worden bezeten of door de nVent Diensten GmbH of zijn filialen vergunning gegeven. Alle andere handelsmerken zijn het bezit van hun respectieve eigenaars.

nVent reserves het recht specificaties zonder bericht te veranderen.