

3-jaw scroll chuck KRF

With base plate



Application:

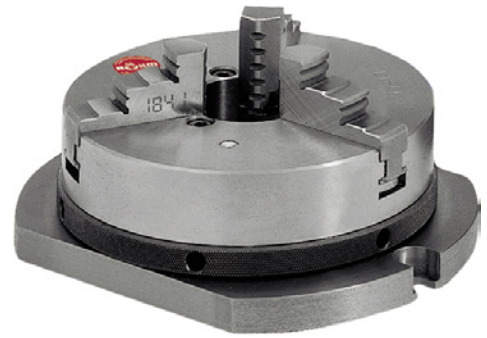
For clamping, positioning and conveying ring-shaped workpieces.

Execution:

- Cast body
- Clamped with knurled ring on the external diameter of the chuck
- In order to retain a constant clamping force over time, the lathe chuck must be lubricated regularly
- centric clamping

Delivery:

1 scroll chuck with 1 set of drilling jaws, 1 set of turning jaws, ref. no. 070 with reversible jaws and 1 clamping pin



Art. no.	22368 160
Brand	RÖHM
Manufacturer Part Number	150598
Number of jaws	3 PCS
Outer diameter	200 mm
Clearance hole	52 mm
Base plate diameter	200 mm
Base plate width	160 mm
Drilling clearance	184 mm
Groove width	11 mm
Height with jaws	85 mm
Gross Weight	9.200 kg
Product Group	203

EAN

4019208053424