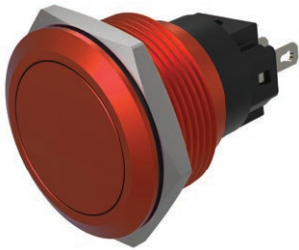


Data sheet .

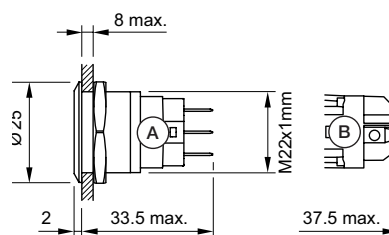
Part No.: 82-6751.2000

Technical data



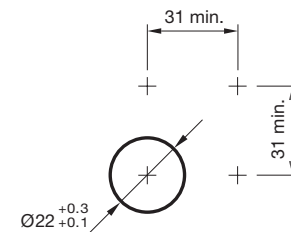
Mounting cut-out	Ø 22 mm
Terminal	Soldering terminal, 2.8 x 0.5 mm
Operating Travel	ca. 3 mm
Lens illumination	non illuminative
Lens colour	Red
Lens shape	flush
Lens material	Aluminium
Lens surface	anodised
Lens optics	opaque
Front bezel colour	Red
Front bezel shape	flush
Front bezel material	Aluminium
Weight	0.018 kg
Contact material	Silver
Switching action	Maintained
Switching system	Snap-action switching element
Contacts	1 C
Operating temperature	- 30 °C ... + 70 °C
Approbations	CB, CCC, C UL, UL
Operating force	4 ... 7 N
Climate resistance	Damp heat, 21 days according to IEC 60512-11
Mechanical lifetime	500 000 cycles of operation
Tightening torque	Fixing nut 0.5 Nm min. ... 1.2 Nm max.

Dimension drawings

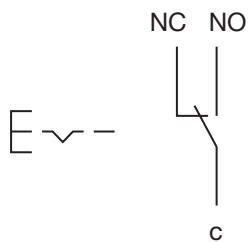


A = Solder terminal
B = Screw terminal

Mounting cut-outs



Wiring diagrams



Component layouts

