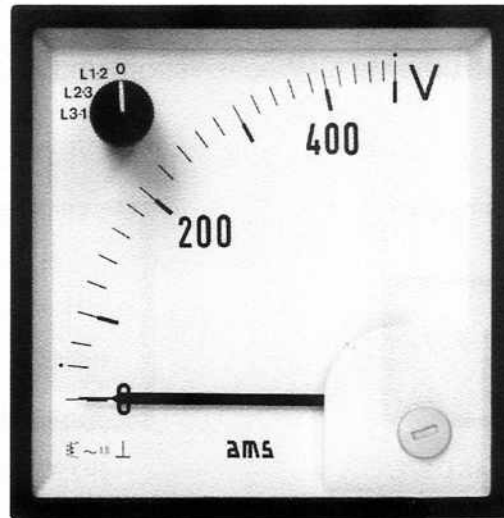
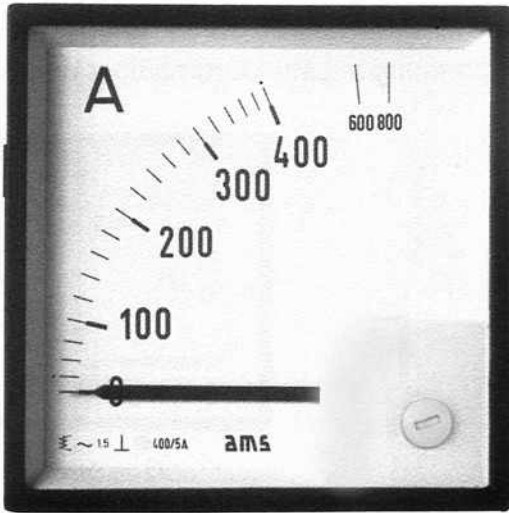


# Square Panel Meters



SQUARE MOVING IRON METERS

## Moving iron meters

- "Ratioserie"
- steel-sheet series

- Ratioserie in polycarbonate housing with interchangeable scale
- Steel-sheet series with steel housing body and aluminium front frame (scale not interchangeable)
- Magnetic shielding
- Ratioserie with snap-in fixing

# Square Panel Meters

## "Ratioserie"

### Moving Iron Meters

for alternating current and alternating voltage  
with interchangeable scale

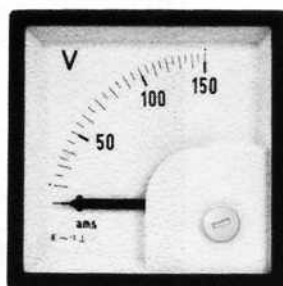
**accuracy class 1.5**

Available housing types:

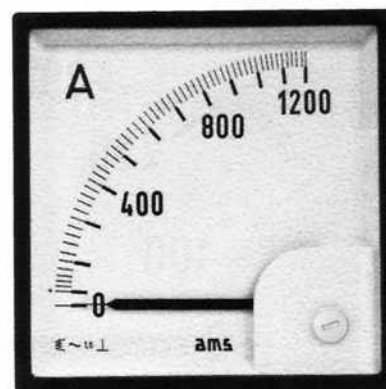
housing according to **DIN 43700**



**SQ 48 DE/L**



**SQ 72 DE**



**SQ 96 DE**

	<b>SQ 48 DE/L</b>	<b>SQ 72 DE</b>	<b>SQ 96 DE</b>
<b>Front frame</b>	48 x 48 mm	72 x 72 mm	96 x 96 mm
<b>Scale length approx.</b>	40 mm	62 mm	97 mm
<b>Weight approx.</b>	0.1 kg	0.15 kg	0.2 kg

**Movement**

moving iron with magnetic shielding

**Damping**

silicone oil

**Bearing**

pivot with spring mounted jewel

**Pointer**

beam-type knife-edge pointer

**Housing**

thermoplastic, i.e. self extinguishing and drip-proof polycarbonate

**Front frame colour**

black, grey on request

**Measuring ranges**

**Ammeters**

**Voltmeters**

100 / 200 mA

10 V

150 / 300 mA

15 V

250 / 500 mA

25 V

400 / 800 mA

40 V

600 / 1200 mA

60 V

1 / 2 A

100 V

1.5 / 3 A

150 V

2.5 / 5 A

250 V

4 / 8 A

300 V

6 / 12 A

400 V

10 / 20 A

500 V

15 / 30 A

600 V

25 / 50 A

100 V (for operation with transformer)

40 / 80 A

110 V (for operation with transformer)

60 / 120 A

100 / 200 A

n / 5 A (for operation with transformer)

n / 1 A (for operation with transformer)

Type SQ 48 DE/L for direct connection only up to 25/50 A  
ammeters also available without overload scale