

AZ2150W

30 AMP MINIATURE POWER RELAY

FEATURES

- 1.75 mm contact gap
- DC coils up to 48V
- High dielectric strength version available
- All plastics PTI 250
- Epoxy sealed versions available
- UL Class F (155°C) standard
- UL, CUR E44211
- VDE 40023154



CONTACTS

Arrangement	SPST (1 Form A)
Ratings	Resistive load: Max. switched power: 900 W or 8310 VA Max. switched current: 30 A Max. switched voltage: 240 VDC* or 440 VAC * Note: If switching voltage is greater than 30 VDC, special precautions must be taken. Please contact the factory.
UL, CUR	30 A at 277 VAC, General Use, Resistive
VDE	20 A at 250 VAC, AC7a
Material	Silver tin oxide
Resistance	< 50 milliohms initially

GENERAL DATA

Life Expectancy Mechanical Electrical	Minimum operations 2 x 10 ⁵ 3 x 10 ⁴ at 30 A 250 VAC Res.
Operate Time	15 msec max. at nominal coil voltage
Release Time	10 msec max. at nominal coil voltage (without suppression)
Dielectric Strength (at sea level for 1 min.)	1500 Vrms contact to contact 2500 Vrms contact to coil 3000 Vrms contact to coil "T" version
Insulation Resistance	1000 megohms min. at 20°C, 500 VDC 50% RH
Dropout	Greater than 10% of nominal coil voltage
Ambient Temperature Operating Storage	-40°C (-40°F) to 85°C (185°F) - DC coils -40°C (-40°F) to 105°C (221°F)
Vibration	0.062" (1.5 mm) DA at 10–55 Hz
Shock	10 g
Enclosure	P.B.T. polyester
Terminals	Tinned copper alloy, P.C.,
Max. Solder Temp.	270°C (518°F)
Max. Solder Time	5 seconds
Max. Solvent Temp.	80°C (176°F)
Max. Immersion Time	30 seconds
Weight	36 grams
Packing unit in pcs	40 per plastic tray / 280 per carton box

COIL

Power	
At Pickup Voltage (typical)	500 mW
Max. Continuous Dissipation	1.7 W at 20°C (68°F) ambient
Temperature Rise	43°C (77°F) at nominal coil voltage
Max. Temperature	155°C (311°F)

NOTES

1. All values at 20°C (68°F).
2. Relay may pull in with less than "Must Operate" value.
3. Specifications subject to change without notice.



AMERICAN ZETTLER, INC.

www.azettler.com

75 COLUMBIA • ALISO VIEJO, CA 92656 • PHONE: (949) 831-5000 • FAX: (949) 831-8642 • E-MAIL: SALES@AZETTLER.COM

2/18/11

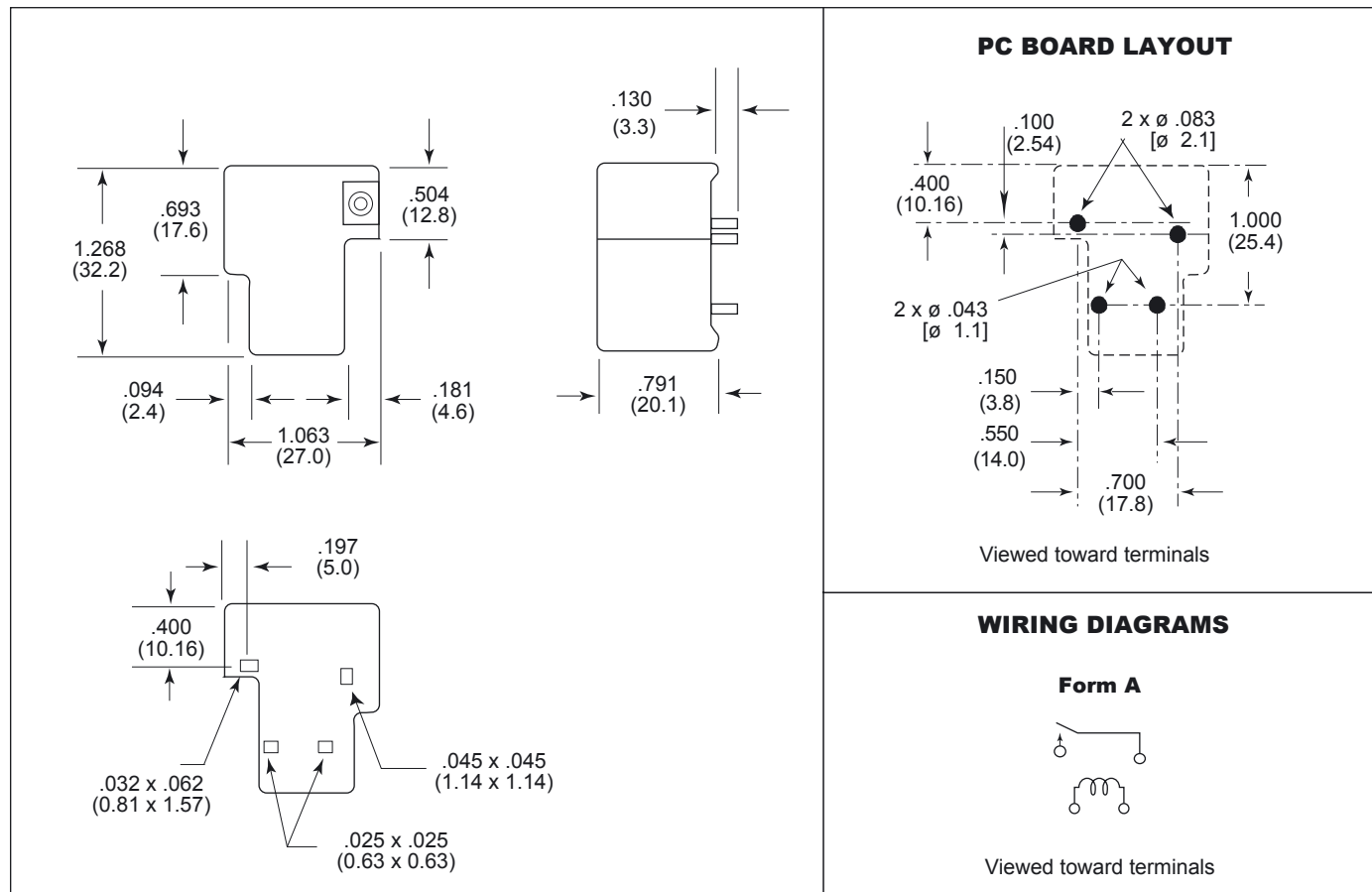
AZ2150W

RELAY ORDERING DATA

COIL SPECIFICATIONS – DC Coil					ORDER NUMBER*
Nominal Coil VDC	Must Operate VDC	Max. Continuous VDC	Nominal Current mA $\pm 10\%$	Coil Resistance Ohm $\pm 10\%$	
5	3.75	6.0	222	22.5	AZ2150W-1AE-5DF
6	4.50	7.2	185	32.5	AZ2150W-1AE-6DF
9	6.75	10.8	123	73	AZ2150W-1AE-9DF
12	9.0	14.4	92	130	AZ2150W-1AE-12DF
24	18.0	38.8	46	520	AZ2150W-1AE-24DF
48	36.0	57.6	23	2,080	AZ2150W-1AE-48DF

* Substitute "DEF" in place of "DF" for epoxy sealed version.
Add "T" at the end of part number for 3000 Vrms dielectric strength version.

MECHANICAL DATA



Dimensions in inches with metric equivalents in parentheses. Tolerance: $\pm .010$ "



AMERICAN ZETTLER, INC.

www.azettler.com

75 COLUMBIA • ALISO VIEJO, CA 92656 • PHONE: (949) 831-5000 • FAX: (949) 831-8642 • E-MAIL: SALES@AZETTLER.COM

2/18/11