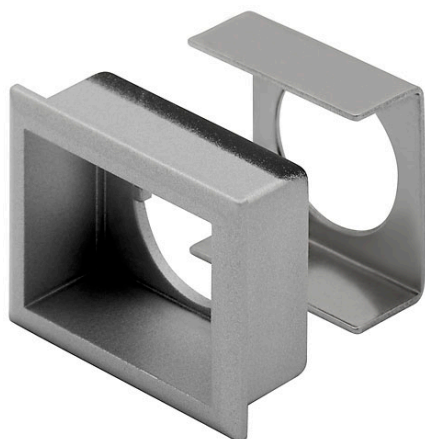


EAO – Your Expert Partner for Human Machine Interfaces

61-9931.4 - Front bezel set for indicator, pushbutton, illuminated pushbutton, flush design

61-9931.4 - Front bezel set for indicator, pushbutton, illuminated pushbutton, flush design



Attention: The preview is based on a sample product. This can differ from your current configuration.

Mounting

Mounting cut-out Design 21 mm x 27 mm
flush

Front

Front bezel material Plastic
Front bezel colour silver
Front dimension 24 mm x 30 mm
Front shape rectangular

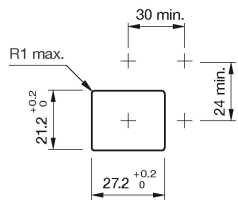
Other Attributes

Weight 0,008 kg

EAO – Your Expert Partner for Human Machine Interfaces

61-9931.4 - Front bezel set for indicator, pushbutton, illuminated pushbutton, flush design

Mounting cut-outs



Additional information

Pitch of the front plate mounting holes must agree with the printed circuit board holes $\varnothing 3.5$