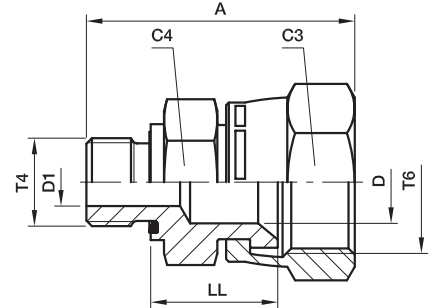


## F642EDMX Swivel male stud

Triple-Lok® 37° Flare female swivel end / Male BSPP thread – ED seal (ISO 1179)



| Tube O.D.  |       | Thread BSPP T4 | Thread UN/UNF-2B T6 | A mm | C3 mm | C4 mm | D mm | D1 mm | LL mm | Weight (steel) g/1 piece | Triple-Lok®           |                        | PN (bar) |     |
|------------|-------|----------------|---------------------|------|-------|-------|------|-------|-------|--------------------------|-----------------------|------------------------|----------|-----|
| mm         | in.   |                |                     |      |       |       |      |       |       |                          | Steel                 | Stainless Steel        | S        | SS  |
| 6          | 1/4   | 1/8-28         | 7/16-20             | 32   | 16    | 14    | 4    | 4     | 15    | 30                       | <b>4F642EDMXS</b>     | <b>4F642EDMXSS</b>     | 500      | 350 |
| 6          | 1/4   | 1/4-19         | 7/16-20             | 37   | 16    | 19    | 4    | 4     | 16    | 30                       | <b>4-4F642EDMXS</b>   | <b>4-4F642EDMXSS</b>   | 420      | 350 |
| 8          | 5/16  | 1/8-28         | 1/2-20              | 34   | 17    | 14    | 6    | 4     | 17    | 28                       | <b>5F642EDMXS</b>     | <b>5F642EDMXSS</b>     | 420      | 350 |
| 8          | 5/16  | 1/4-19         | 1/2-20              | 39   | 17    | 19    | 6    | 6     | 18    | 37                       | <b>5-4F642EDMXS</b>   | <b>5-4F642EDMXSS</b>   | 420      | 350 |
| 10         | 3/8   | 1/4-19         | 9/16-18             | 40   | 19    | 19    | 8    | 6     | 18    | 41                       | <b>6F642EDMXS</b>     | <b>6F642EDMXSS</b>     | 350      | 350 |
| 10         | 3/8   | 3/8-19         | 9/16-18             | 40   | 19    | 22    | 8    | 8     | 19    | 57                       | <b>6-6F642EDMXS</b>   | <b>6-6F642EDMXSS</b>   | 350      | 350 |
| 12         | 1/2   | 3/8-19         | 3/4-16              | 44   | 22    | 22    | 10   | 9     | 21    | 62                       | <b>8F642EDMXS</b>     | <b>8F642EDMXSS</b>     | 350      | 350 |
| 12         | 1/2   | 1/4-19         | 3/4-16              | 44   | 22    | 19    | 10   | 6     | 21    | 60                       | <b>8-4F642EDMXS</b>   | <b>8-4F642EDMXSS</b>   | 350      | 350 |
| 12         | 1/2   | 1/2-14         | 3/4-16              | 48   | 22    | 27    | 10   | 10    | 23    | 75                       | <b>8-8F642EDMXS</b>   | <b>8-8F642EDMXSS</b>   | 350      | 350 |
| 14, 15, 16 | 5/8   | 1/2-14         | 7/8-14              | 50   | 27    | 27    | 12   | 12    | 23    | 127                      | <b>10F642EDMXS</b>    | <b>10F642EDMXSS</b>    | 350      | 350 |
| 14, 15, 16 | 5/8   | 3/8-19         | 7/8-14              | 48   | 27    | 22    | 12   | 9     | 23    | 84                       | <b>10-6F642EDMXS</b>  | <b>10-6F642EDMXSS</b>  | 350      | 350 |
| 18, 20     | 3/4   | 3/4-14         | 1 1/16-12           | 55   | 32    | 32    | 16   | 16    | 24    | 183                      | <b>12F642EDMXS</b>    | <b>12F642EDMXSS</b>    | 350      | 350 |
| 18, 20     | 3/4   | 1/2-14         | 1 1/16-12           | 53   | 32    | 27    | 16   | 14    | 25    | 170                      | <b>12-8F642EDMXS</b>  | <b>12-8F642EDMXSS</b>  | 350      | 350 |
| 25         | 1     | 1-11           | 1 5/16-12           | 61   | 38    | 41    | 22   | 22    | 27    | 296                      | <b>16F642EDMXS</b>    | <b>16F642EDMXSS</b>    | 250      | 250 |
| 25         | 1     | 3/4-14         | 1 5/16-12           | 59   | 38    | 36    | 22   | 18    | 27    | 254                      | <b>16-12F642EDMXS</b> | <b>16-12F642EDMXSS</b> | 250      | 250 |
| 28, 30, 33 | 1 1/4 | 1 1/4-11       | 1 5/8-12            | 68   | 50    | 50    | 28   | 28    | 32    | 500                      | <b>20F642EDMXS</b>    | <b>20F642EDMXSS</b>    | 250      | 210 |
| 28, 30, 32 | 1 1/4 | 1-11           | 1 5/8-12            | 70   | 50    | 41    | 28   | 23    | 36    | 440                      | <b>20-16F642EDMXS</b> | <b>20-16F642EDMXSS</b> | 250      | 210 |
| 35, 38     | 1 1/2 | 1 1/2-11       | 1 7/8-12            | 77   | 60    | 55    | 33   | 33    | 36    | 739                      | <b>24F642EDMXS</b>    | <b>24F642EDMXSS</b>    | 170      | 140 |
| 35, 38     | 1 1/2 | 1 1/4-11       | 1 7/8-12            | 72   | 60    | 50    | 33   | 30    | 33    | 627                      | <b>24-20F642EDMXS</b> | <b>24-20F642EDMXSS</b> | 170      | 140 |

Steel, stainless steel and brass Triple-Lok® parts are delivered with NBR elastomeric seals as standard. For more details on other seal materials see page K91.

Order codes shown are part of our current manufacturing programme.

Imperial and metric parts may vary in hexagon dimensions.

$$\frac{\text{PN (bar)}}{10} = \text{PN (MPa)}$$

Pressure ratings – PN shown, apply to Steel and Stainless Steel versions of the product.