

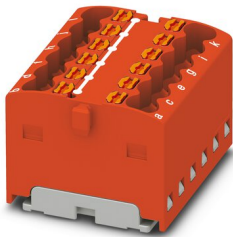
# Distribution block - PTFIX 12X1,5 RD



3002766

<https://www.phoenixcontact.com/gb/products/3002766>

Please be informed that the data shown in this PDF document is generated from our Online Catalog. Please find the complete data in the user documentation. Our General Terms of Use for Downloads are valid.



Distribution block, the blocks can be bridged with one another via the conductor shaft, for corresponding plug-in bridges, see accessories, bridged internally, nom. voltage: 450 V, nominal current: 17.5 A, connection method: Push-in connection, cross section: 0.14 mm<sup>2</sup> - 2.5 mm<sup>2</sup>, mounting type: for snapping onto a DIN rail adapter, Direct mounting with flange, Free-hanging, color: red

## Your advantages

- Space-saving, thanks to the compact design
- Flexible use, thanks to direct mounting with flange covers from accessories
- Space-saving potential distribution, thanks to compact micro potential distributors
- Convenient test options, thanks to test openings at every terminal point
- Clear arrangement thanks to marking of all terminal points

## Commercial Data

|                                      |                     |
|--------------------------------------|---------------------|
| Item number                          | 3002766             |
| Packing unit                         | 20 pc               |
| Minimum order quantity               | 20 pc               |
| Sales Key                            | BEA114              |
| Product Key                          | BEA114              |
| Catalog Page                         | Page 429 (C-1-2019) |
| GTIN                                 | 4055626432472       |
| Weight per Piece (including packing) | 10.615 g            |
| Weight per Piece (excluding packing) | 10.5 g              |
| Customs tariff number                | 85369010            |
| Country of origin                    | PL                  |

# Distribution block - PTFIX 12X1,5 RD



3002766

<https://www.phoenixcontact.com/gb/products/3002766>

## Technical Data

### Notes

|                    |  |
|--------------------|--|
| Notes on operation | the blocks can be bridged with one another via the conductor shaft, for corresponding plug-in bridges, see accessories |
|--------------------|--|

### Product properties

|                       |                            |
|-----------------------|----------------------------|
| Product type          | Distributor terminal block |
| Number of connections | 12                         |
| Number of rows        | 1                          |
| Potentials            | 1                          |

### Insulation characteristics

|                      |     |
|----------------------|-----|
| Overvoltage category | III |
| Degree of pollution  | 3   |

### Electrical properties

|   |        |
|---|--------|
| Rated surge voltage                             | 6 kV   |
| Maximum power dissipation for nominal condition | 0.56 W |

### Connection data

|   |  |
|---|--|
| Number of connections per level   | 12   |
| Nominal cross section   | 1.5 mm <sup>2</sup>                          |
| Rated cross section AWG   | 14   |
| Stripping length  | 8 mm ... 10 mm                               |
| Internal cylindrical gage   | A1 / B1                                      |
| Connection in acc. with standard  | IEC 60998-2-2                                |
| Conductor cross section solid   | 0.14 mm <sup>2</sup> ... 2.5 mm <sup>2</sup> |
| Cross section AWG   | 26 ... 14 (converted acc. to IEC)            |
| Conductor cross section flexible  | 0.14 mm <sup>2</sup> ... 1.5 mm <sup>2</sup> |
| Conductor cross section, flexible [AWG]                                 | 24 ... 14 (converted acc. to IEC)            |
| Flexible conductor cross section flexible (ferrule, w/o plastic sleeve) | 0.14 mm <sup>2</sup> ... 1.5 mm <sup>2</sup> |
| Flexible conductor cross section (ferrule with plastic sleeve)          | 0.14 mm <sup>2</sup> ... 1.5 mm <sup>2</sup> |
| Nominal current   | 17.5 A                                       |
| Maximum load current  | 22 A   |
| Maximum total current   | 26 A   |
| Nominal voltage   | 450 V  |

### Connection cross sections directly pluggable

|   |  |
|---|--|
| Conductor cross section solid   | 0.34 mm <sup>2</sup> ... 2.5 mm <sup>2</sup> |
| Conductor cross section, solid [AWG]                                    | 26 ... 14 (converted acc. to IEC)            |
| Flexible conductor cross section flexible (ferrule, w/o plastic sleeve) | 0.34 mm <sup>2</sup> ... 1.5 mm <sup>2</sup> |
| Flexible conductor cross section (ferrule with plastic sleeve)          | 0.34 mm <sup>2</sup> ... 1.5 mm <sup>2</sup> |

# Distribution block - PTFIX 12X1,5 RD



3002766

<https://www.phoenixcontact.com/gb/products/3002766>

## Dimensions

|        |         |
|--------|---------|
| Width  | 24.9 mm |
| Height | 17.7 mm |
| Length | 21.6 mm |

## Material specifications

|  |     |
|--|-----|
| Color                                  | red |
| Flammability rating according to UL 94 | V0  |
| Insulating material group              | I   |
| Insulating material                    | PA  |

## Mechanical properties

### Mechanical data

|                 |    |
|-----------------|----|
| Open side panel | No |
|-----------------|----|

## Mechanical tests

### Attachment on the carrier

|                         |   |
|-------------------------|---|
| DIN rail/fixing support | NS 35/NS 15   |
| Result                  | Test passed   |
| Note                    | <p>When aligning several blocks, it is recommended to either place a DIN rail adapter underneath the connection point or a flange element between the blocks.</p> <p>For versions with 6 or 7 connections, it is enough to place one DIN rail adapter centrally per block and place flange elements after every other block.</p> <p>When using the DIN rail adapter PTFIX-NS35, an aligned block must not protrude by more than a half.</p> |

## Environmental and real-life conditions

### Aging

|                    |     |
|--------------------|-----|
| Temperature cycles | 192 |
|--------------------|-----|

### Needle-flame test

|                  |             |
|------------------|-------------|
| Time of exposure | 30 s        |
| Result           | Test passed |

### Ambient conditions

|  |   |
|--|---|
| Ambient temperature (operation)          | -60 °C ... 105 °C (max. short-term operating temperature RTI Elec.)       |
| Ambient temperature (storage/transport)  | -25 °C ... 60 °C (for a short time, not exceeding 24 h, -60 °C to +70 °C) |
| Ambient temperature (assembly)           | -5 °C ... 70 °C   |
| Ambient temperature (actuation)          | -5 °C ... 70 °C   |
| Permissible humidity (storage/transport) | 30 % ... 70 %   |

# Distribution block - PTFIX 12X1,5 RD



3002766

<https://www.phoenixcontact.com/gb/products/3002766>

## Standards and regulations

|                                  |               |
|----------------------------------|---------------|
| Connection in acc. with standard | IEC 60998-2-2 |
|----------------------------------|---------------|

## Mounting

|               |                                      |
|---------------|--------------------------------------|
| Mounting type | for snapping onto a DIN rail adapter |
|               | Direct mounting with flange          |
|               | Free-hanging                         |

# Distribution block - PTFIX 12X1,5 RD

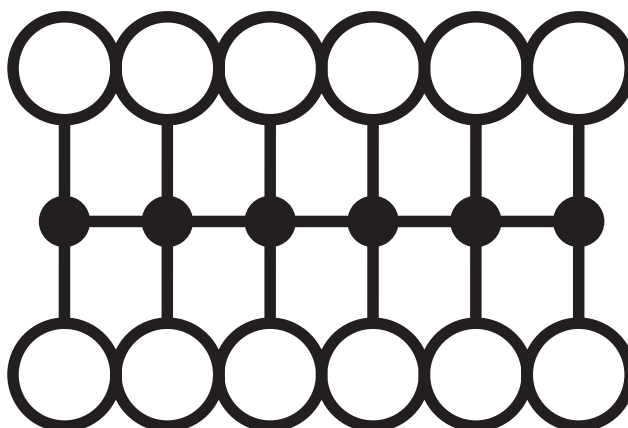
3002766

<https://www.phoenixcontact.com/gb/products/3002766>



## Drawings

Circuit diagram



# Distribution block - PTFIX 12X1,5 RD



3002766

<https://www.phoenixcontact.com/gb/products/3002766>

## Approvals

| <b>DNV</b><br>Approval ID: TAE00002TT |                       |                       |                   |                      |
|---------------------------------------|-----------------------|-----------------------|-------------------|----------------------|
|                                       | Nominal Voltage $U_N$ | Nominal Current $I_N$ | Cross Section AWG | Cross Section $mm^2$ |
|                                       | 500 V                 | 24 A                  | -                 | -                    |

| <b>CSA</b><br>Approval ID: 13631 |                       |                       |                   |                      |
|----------------------------------|-----------------------|-----------------------|-------------------|----------------------|
|                                  | Nominal Voltage $U_N$ | Nominal Current $I_N$ | Cross Section AWG | Cross Section $mm^2$ |
| Use group B                      | 300 V                 | 20 A                  | 26 - 12           | -                    |
| Use group C                      | 150 V                 | 20 A                  | 26 - 12           | -                    |
| Use group D                      | 300 V                 | 10 A                  | 26 - 12           | -                    |

| <b>IECEE CB Scheme</b><br>Approval ID: DE1-63083 |                       |                       |                   |                      |
|--|-----------------------|-----------------------|-------------------|----------------------|
|  | Nominal Voltage $U_N$ | Nominal Current $I_N$ | Cross Section AWG | Cross Section $mm^2$ |
|  | 450 V                 | 17.5 A                | -                 | - 1.5                |

| <b>EAC</b><br>Approval ID: RU C-DE.BL08.B.00644 |  |  |  |  |
|---|--|--|--|--|
|---|--|--|--|--|

| <b>LR</b><br>Approval ID: LR2002627TA |  |  |  |  |
|---------------------------------------|--|--|--|--|
|---------------------------------------|--|--|--|--|

| <b>BV</b><br>Approval ID: 59146/A0 BV |  |  |  |  |
|---------------------------------------|--|--|--|--|
|---------------------------------------|--|--|--|--|

| <b>VDE Zeichengenehmigung</b><br>Approval ID: 40047798 |  |  |  |  |
|--|--|--|--|--|
|--|--|--|--|--|

| <b>cULus Recognized</b><br>Approval ID: E60425 |                       |                       |                   |                      |
|--|-----------------------|-----------------------|-------------------|----------------------|
|  | Nominal Voltage $U_N$ | Nominal Current $I_N$ | Cross Section AWG | Cross Section $mm^2$ |
| Use group B                                    | 300 V                 | 20 A                  | 26 - 12           | -                    |

# Distribution block - PTFIX 12X1,5 RD



3002766

<https://www.phoenixcontact.com/gb/products/3002766>

|             |       |      |         |   |
|-------------|-------|------|---------|---|
| Use group C | 150 V | 20 A | 26 - 12 | - |
| Use group F | 500 V | 20 A | 26 - 12 | - |
| Use group D | 300 V | 10 A | 26 - 12 | - |

# Distribution block - PTFIX 12X1,5 RD



3002766

<https://www.phoenixcontact.com/gb/products/3002766>

## Classifications

### ECLASS

|               |          |
|---------------|----------|
| ECLASS-9.0    | 27141120 |
| ECLASS-10.0.1 | 27141120 |
| ECLASS-11.0   | 27141120 |

### ETIM

|          |          |
|----------|----------|
| ETIM 8.0 | EC000897 |
|----------|----------|

### UNSPSC

|             |          |
|-------------|----------|
| UNSPSC 21.0 | 39121400 |
|-------------|----------|



# Distribution block - PTFIX 12X1,5 RD



3002766

<https://www.phoenixcontact.com/gb/products/3002766>

## Environmental Product Compliance

|            |   |
|------------|---|
| China RoHS | Environmentally friendly use period: unlimited = EFUP-e |
|            | No hazardous substances above threshold values          |

# Distribution block - PTFIX 12X1,5 RD

3002766

<https://www.phoenixcontact.com/gb/products/3002766>

## Accessories

 Note: Applying some accessories below might limit this product.

### Plug-in bridge

Plug-in bridge - FBS 2-4 - 3030116

<https://www.phoenixcontact.com/gb/products/3030116>



Plug-in bridge, pitch: 4.2 mm, color: red

 Max. current carrying capacity: 17.5 A

---

### Plug-in bridge

Plug-in bridge - FBS 2-4 GY - 3030118

<https://www.phoenixcontact.com/gb/products/3030118>



Plug-in bridge, pitch: 4.2 mm, color: gray

 Max. current carrying capacity: 17.5 A

# Distribution block - PTFIX 12X1,5 RD

3002766

<https://www.phoenixcontact.com/gb/products/3002766>




## Plug-in bridge

Plug-in bridge - FBS 2-4 BU - 3030117

<https://www.phoenixcontact.com/gb/products/3030117>



Plug-in bridge, pitch: 4.2 mm, color: blue

 Max. current carrying capacity: 17.5 A

---

## Flange

Flange - PTFIX 1,5-F - 1049503

<https://www.phoenixcontact.com/gb/products/1049503>



Flange, with screw-on fixing, mounting type: Screw mounting, color: gray

# Distribution block - PTFIX 12X1,5 RD

3002766

<https://www.phoenixcontact.com/gb/products/3002766>

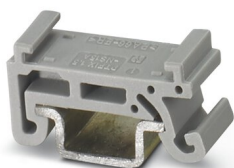


## DIN rail adapter

DIN rail adapter - PTFIX 1,5-NS15A - 1049500

<https://www.phoenixcontact.com/gb/products/1049500>

DIN rail adapter, length: 21.6 mm, width: 8 mm, height: 10.85 mm



---

## DIN rail adapter

DIN rail adapter - PTFIX 1,5-NS35 - 1049497

<https://www.phoenixcontact.com/gb/products/1049497>

DIN rail adapter, length: 58.1 mm, width: 21.6 mm, height: 11 mm



# Distribution block - PTFIX 12X1,5 RD

3002766

<https://www.phoenixcontact.com/gb/products/3002766>



## DIN rail adapter

DIN rail adapter - PTFIX 1,5-NS35AD - 1049498

<https://www.phoenixcontact.com/gb/products/1049498>

DIN rail adapter, for NS 35 for accommodating two rows of PTFIX 1,5 distribution blocks, length: 44.4 mm, width: 8 mm, height: 10.9 mm



---

## Mounting adapter

Mounting adapter - PTFIX 1,5-RZF - 1050613

<https://www.phoenixcontact.com/gb/products/1050613>

Adapter for direct mounting



# Distribution block - PTFIX 12X1,5 RD

3002766

<https://www.phoenixcontact.com/gb/products/3002766>



## Accessories

Accessories - MPS-MT 1-S4-B RD - 1982800

<https://www.phoenixcontact.com/gb/products/1982800>

Test plug terminal block, Accessories



---

## Insulating sleeve

Insulating sleeve - ISH 1,5/0,2 - 3206131

<https://www.phoenixcontact.com/gb/products/3206131>

Insulating sleeve, color: white



# Distribution block - PTFIX 12X1,5 RD

3002766

<https://www.phoenixcontact.com/gb/products/3002766>



## Insulating sleeve

Insulating sleeve - ISH 1,5/0,5 - 3031034

<https://www.phoenixcontact.com/gb/products/3031034>

Insulating sleeve, color: gray



---

## Marker card

Marker card - SK 3,8 REEL P4,15 WH CUS - 0825990

<https://www.phoenixcontact.com/gb/products/0825990>

Marker card, can be ordered: by card, white, labeled according to customer specifications, mounting type: adhesive, for terminal block width: 4.15 mm, lettering field size: continuous x 3.8 mm



# Distribution block - PTFIX 12X1,5 RD

3002766

<https://www.phoenixcontact.com/gb/products/3002766>

## Marker strip

Marker strip - TML (EX3,8)R - 0801837

<https://www.phoenixcontact.com/gb/products/0801837>



Marker strip, Roll, white, unlabeled, can be labeled with: THERMOMARK E.300 (D)/600 (D), THERMOMARK ROLL 2.0, THERMOMARK ROLL, THERMOMARK ROLL X1, THERMOMARK ROLLMASTER 300/600, THERMOMARK X1.2, mounting type: adhesive, for terminal block width: 30000 mm, lettering field size: 30000 x 3.8 mm, Number of individual labels: 12

---

## Marker strip

Marker strip - TML (104X3,8)R - 0801833

<https://www.phoenixcontact.com/gb/products/0801833>



Marker strip, Roll, white, unlabeled, can be labeled with: THERMOMARK E.300 (D)/600 (D), THERMOMARK ROLL 2.0, THERMOMARK ROLL, THERMOMARK ROLL X1, THERMOMARK ROLLMASTER 300/600, THERMOMARK X1.2, mounting type: adhesive, for terminal block width: 104 mm, lettering field size: 104 x 3.8 mm, Number of individual labels: 2500



# Distribution block - PTFIX 12X1,5 RD

3002766

<https://www.phoenixcontact.com/gb/products/3002766>

## Marker strip

Marker strip - TML (104X2,8)R - 0801832

<https://www.phoenixcontact.com/gb/products/0801832>



Marker strip, Roll, white, unlabeled, can be labeled with: THERMOMARK E.300 (D)/600 (D), THERMOMARK ROLL 2.0, THERMOMARK ROLL, THERMOMARK ROLL X1, THERMOMARK ROLLMASTER 300/600, THERMOMARK X1.2, mounting type: adhesive, for terminal block width: 104 mm, lettering field size: 104 x 2.8 mm, Number of individual labels: 2500

---

## Marker strip

Marker strip - TML (EX2,8)R - 0801836

<https://www.phoenixcontact.com/gb/products/0801836>



Marker strip, Roll, white, unlabeled, can be labeled with: THERMOMARK E.300 (D)/600 (D), THERMOMARK ROLL 2.0, THERMOMARK ROLL, THERMOMARK ROLL X1, THERMOMARK ROLLMASTER 300/600, THERMOMARK X1.2, mounting type: adhesive, for terminal block width: 30000 mm, lettering field size: 30000 x 2.8 mm, Number of individual labels: 14

# Distribution block - PTFIX 12X1,5 RD

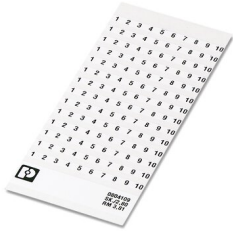
3002766

<https://www.phoenixcontact.com/gb/products/3002766>

## Marker card

Marker card - SK 2,8 REEL P4,15 WH CUS - 8199987

<https://www.phoenixcontact.com/gb/products/8199987>



Marker card, can be ordered: by card, white, labeled according to customer specifications, mounting type: adhesive, for terminal block width: 4.15 mm, lettering field size: continuous x 2.8 mm

---

## Marker for terminal blocks

Marker for terminal blocks - US-TML (104X3,8) - 0830768

<https://www.phoenixcontact.com/gb/products/0830768>



Marker for terminal blocks, Card, white, unlabeled, can be labeled with: BLUEMARK ID COLOR, BLUEMARK ID, THERMOMARK PRIME, THERMOMARK CARD 2.0, THERMOMARK CARD, mounting type: adhesive, lettering field size: 104 x 3.8 mm, Number of individual labels: 22

# Distribution block - PTFIX 12X1,5 RD



3002766

<https://www.phoenixcontact.com/gb/products/3002766>

## Marker for terminal blocks

Marker for terminal blocks - US-TML (104X2,8) - 0830767

<https://www.phoenixcontact.com/gb/products/0830767>



Marker for terminal blocks, Card, white, unlabeled, can be labeled with: BLUEMARK ID COLOR, BLUEMARK ID, THERMOMARK PRIME, THERMOMARK CARD 2.0, THERMOMARK CARD, mounting type: adhesive, lettering field size: 104 x 2.8 mm, Number of individual labels: 26

---

## Marker card

Marker card - SK U/3,8 WH:UNBEDRUCKT - 0803906

<https://www.phoenixcontact.com/gb/products/0803906>



Marker card, Sheet, white, unlabeled, can be labeled with: PLOTMARK, CMS-P1-PLOTTER, Office printing systems, mounting type: adhesive, for terminal block width: 210 mm, lettering field size: 186 x 3.8 mm, Number of individual labels: 1440

# Distribution block - PTFIX 12X1,5 RD



3002766

<https://www.phoenixcontact.com/gb/products/3002766>

## Marker card

Marker card - SK U/2,8 WH:UNBEDRUCKT - 0803883

<https://www.phoenixcontact.com/gb/products/0803883>



Marker card, Sheet, white, unlabeled, can be labeled with: PLOTMARK, CMS-P1-PLOTTER, Office printing systems, mounting type: adhesive, for terminal block width: 210 mm, lettering field size: 186 x 2.8 mm, Number of individual labels: 3600

---

## Label

Label - MM-TML (EX3,8)R C1 WH/BK - 1092026

<https://www.phoenixcontact.com/gb/products/1092026>



Label, Roll, white/black, unlabeled, can be labeled with: THERMOFOX, THERMOMARK GO, THERMOMARK GO.K, mounting type: adhesive, lettering field size: continuous x 2.8 mm

---

Phoenix Contact 2022 © - all rights reserved

<https://www.phoenixcontact.com>

PHOENIX CONTACT Ltd

Halesfield 13, Telford

Shropshire, TF7 4PG

01952 681700

[info@phoenixcontact.co.uk](mailto:info@phoenixcontact.co.uk)