

The 5000 Series Expanded Beam Connector range provides a high performance and a simple termination process. This allows for a rapid in-field termination and repair where inserts and termination kits are available. Moreover, the newly designed cable management system prevents fibers and cable to be twisted and their corresponding performance loss.



Key Features:

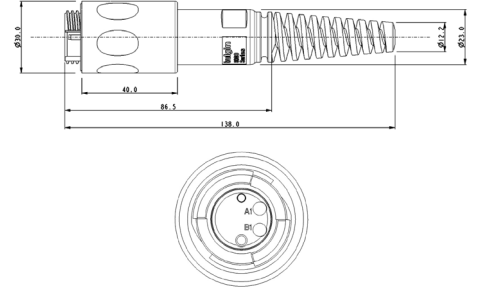
- Designed to MIL-DTL-83526D
- Compatible with any Connector that follows MIL-DTL-83526D
- Max Insertion Loss <2dB  
Average Insertion Loss <1.5dB
- Rated to IP68
- Operating Temperature -50oC to +80oC (With Outdoor Tactical Cable)
- Available with 2 and 4 Channels
- Available with OM1 and OM3 Fibre Types
- Cable range from 1 to 450m
- Plug, Jam Nut, and Flange Mount Connector Body Options
- Plug to Plug, Plug to LC, and Plug to SC Cable Assembly Options Available
- Secure, proven locking system
- All plastic body version; UL94-V0 rated, UV stable, halogen free  
Light-weight, self-extinguishing material suitable for long-term outdoor and defence use.

2 Channel Plug Connector



PXEB5200MM4045

- Non-terminated Connector for a 2-Channel Cable
- Compatible with OM1 & OM3
- Dust Cap, Lanyard, & Ferrules (termini) for the Cable Included
- Mates with Plug, Jam Nut, & Flange Mount Connectors (hermaphroditic)
- 4.0mm – 6.0mm Cable Acceptance
- Available in 4 Channels
- Cable Assembly Available



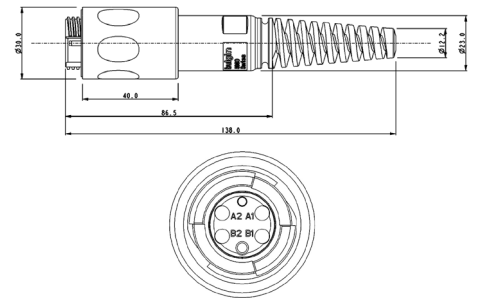
| Part Number    | Channels | Multimode / Singlemode | Fibre Type | Cable Acceptance |
|----------------|----------|------------------------|------------|------------------|
| PXEB5200MM4045 | 2        | Multimode              | OM1 & OM3  | 4.0mm – 4.5mm    |
| PXEB5200MM4550 | 2        | Multimode              | OM1 & OM3  | 4.5mm – 5.0mm    |
| PXEB5200MM5055 | 2        | Multimode              | OM1 & OM3  | 5.0mm – 5.5mm    |
| PXEB5200MM5560 | 2        | Multimode              | OM1 & OM3  | 5.5mm – 6.0mm    |

4 Channel Plug Connector



PXEB5400MM4045

- Non-terminated Connector for a 4-Channel Cable
- Compatible with OM1 & OM3
- Dust Cap, Lanyard, & Ferrules (termini) for the Cable Included
- Mates with Plug, Jam Nut, & Flange Mount Connectors (hermaphroditic)
- 4.0mm – 6.0mm Cable Acceptance
- Available in 2 Channels
- Cable Assembly Available



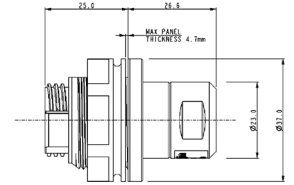
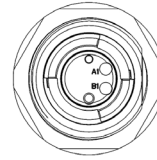
| Part Number    | Channels | Multimode / Singlemode | Fibre Type | Cable Acceptance |
|----------------|----------|------------------------|------------|------------------|
| PXEB5400MM4045 | 4        | Multimode              | OM1 & OM3  | 4.0mm – 4.5mm    |
| PXEB5400MM4550 | 4        | Multimode              | OM1 & OM3  | 4.5mm – 5.0mm    |
| PXEB5400MM5055 | 4        | Multimode              | OM1 & OM3  | 5.0mm – 5.5mm    |
| PXEB5400MM5560 | 4        | Multimode              | OM1 & OM3  | 5.5mm – 6.0mm    |

2 Channel Jam Nut Bulkhead Connector



PXEB5210MM

- Non-terminated Connector for 2 patch leads
- Compatible with OM1 & OM3
- Dust Cap, Lanyard, & Ferrules (termini) for the patch leads included
- Mates with Plug Connectors (hermaphroditic)
- Available in 4 Channels
- Cable Assembly Available
- Maximum Panel Thickness – 4.7mm



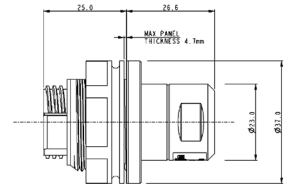
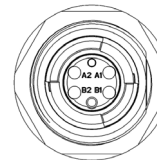
| Part Number | Channels | Multimode / Singlemode | Fibre Type | Cable Acceptance |
|-------------|----------|------------------------|------------|------------------|
| PXEB5210MM  | 2        | Multimode              | OM1 & OM3  | N/A              |

4 Channel Jam Nut Bulkhead Connector



PXEB5410MM

- Non-terminated Connector for 4 patch leads
- Compatible with OM1 & OM3
- Dust Cap, Lanyard, & Ferrules (termini) for the patch leads included
- Mates with Plug Connectors (hermaphroditic)
- Available in 2 Channels
- Cable Assembly Available
- Maximum Panel Thickness – 4.7mm



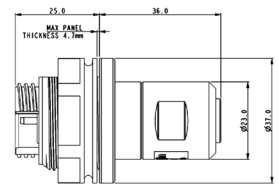
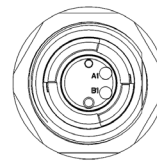
| Part Number | Channels | Multimode / Singlemode | Fibre Type | Cable Acceptance |
|-------------|----------|------------------------|------------|------------------|
| PXEB5410MM  | 4        | Multimode              | OM1 & OM3  | N/A              |

2 Channel Jam Nut Bulkhead Connector with Cable Acceptance



PXEB5210MM4045

- Non-terminated Connector for a 2-Channel Cable
- Compatible with OM1 & OM3
- Dust Cap, Lanyard, & Ferrules (termini) for the Cable Included
- Mates with Plug Connectors (hermaphroditic)
- Available in 4 Channels
- Maximum Panel Thickness – 4.7mm



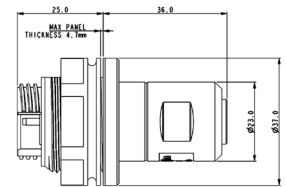
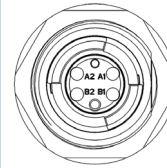
| Part Number    | Channels | Multimode / Singlemode | Fibre Type | Cable Acceptance |
|----------------|----------|------------------------|------------|------------------|
| PXEB5210MM4045 | 2        | Multimode              | OM1 & OM3  | 4.0mm – 4.5mm    |
| PXEB5210MM4550 | 2        | Multimode              | OM1 & OM3  | 4.5mm – 5.0mm    |
| PXEB5210MM5055 | 2        | Multimode              | OM1 & OM3  | 5.0mm – 5.5mm    |
| PXEB5210MM5560 | 2        | Multimode              | OM1 & OM3  | 5.5mm – 6.0mm    |

4 Channel Jam Nut Bulkhead Connector with Cable Acceptance



PXEB5410MM4550

- Non-terminated Connector for a 4-Channel Cable
- Compatible with OM1 & OM3
- Dust Cap, Lanyard, & Ferrules (termini) for the Cable Included
- Mates with Plug Connectors (hermaphroditic)
- Available in 2 Channels
- Maximum Panel Thickness – 4.7mm



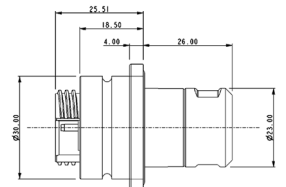
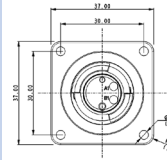
| Part Number    | Channels | Multimode / Singlemode | Fibre Type | Cable Acceptance |
|----------------|----------|------------------------|------------|------------------|
| PXEB5410MM4045 | 4        | Multimode              | OM1 & OM3  | 4.0mm – 4.5mm    |
| PXEB5410MM4550 | 4        | Multimode              | OM1 & OM3  | 4.5mm – 5.0mm    |
| PXEB5410MM5055 | 4        | Multimode              | OM1 & OM3  | 5.0mm – 5.5mm    |
| PXEB5410MM5560 | 4        | Multimode              | OM1 & OM3  | 5.5mm – 6.0mm    |

2 Channel Flange Mount Bulkhead Connector



PXEB5220MM

- Non-terminated Connector for 2 patch leads
- Compatible with OM1 & OM3
- Dust Cap, Lanyard, & Ferrules (termini) for the patch leads included
- Mates with Plug Connectors (hermaphroditic)
- Available in 4 Channels



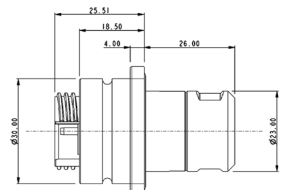
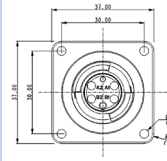
| Part Number | Channels | Multimode / Singlemode | Fibre Type | Cable Acceptance |
|-------------|----------|------------------------|------------|------------------|
| PXEB5220MM  | 2        | Multimode              | OM1 & OM3  | N/A              |

4 Channel Flange Mount Bulkhead Connector



PXEB5420MM

- Non-terminated Connector for 4 patch leads
- Compatible with OM1 & OM3
- Dust Cap, Lanyard, & Ferrules (termini) for the patch leads included
- Mates with Plug Connectors (hermaphroditic)
- Available in 2 Channels



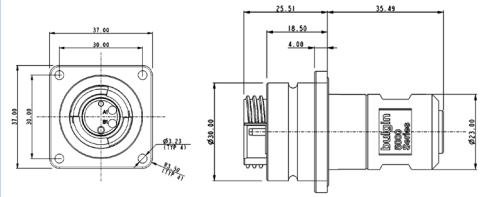
| Part Number | Channels | Multimode / Singlemode | Fibre Type | Cable Acceptance |
|-------------|----------|------------------------|------------|------------------|
| PXEB5420MM  | 4        | Multimode              | OM1 & OM3  | N/A              |

2 Channel Flange Mount Bulkhead Connector with Cable Acceptance



PXEB5220MM4045

- Non-terminated Connector for a 2-Channel Cable
- Compatible with OM1 & OM3
- Dust Cap, Lanyard, & Ferrules (termini) for the Cable Included
- Mates with Plug Connectors (hermaphroditic)
- Available in 4 Channels
- Maximum Panel Thickness – 4.7mm



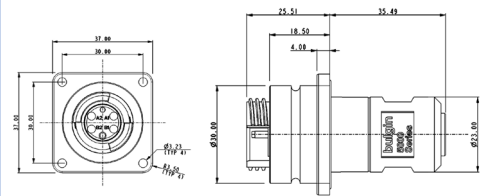
| Part Number    | Channels | Multimode / Singlemode | Fibre Type | Cable Acceptance |
|----------------|----------|------------------------|------------|------------------|
| PXEB5220MM4045 | 2        | Multimode              | OM1 & OM3  | 4.0mm – 4.5mm    |
| PXEB5220MM4550 | 2        | Multimode              | OM1 & OM3  | 4.5mm – 5.0mm    |
| PXEB5220MM5055 | 2        | Multimode              | OM1 & OM3  | 5.0mm – 5.5mm    |
| PXEB5220MM5560 | 2        | Multimode              | OM1 & OM3  | 5.5mm – 6.0mm    |

4 Channel Flange Mount Bulkhead Connector with Cable Acceptance



PXEB5420MM4550

- Non-terminated Connector for a 4-Channel Cable
- Compatible with OM1 & OM3
- Dust Cap, Lanyard, & Ferrules (termini) for the Cable Included
- Mates with Plug Connectors (hermaphroditic)
- Available in 2 Channels



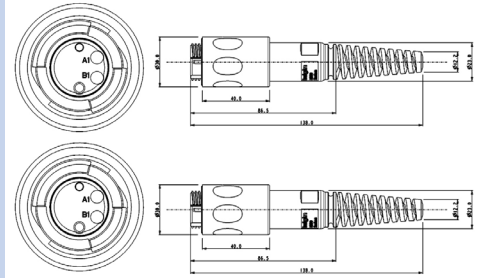
| Part Number    | Channels | Multimode / Singlemode | Fibre Type | Cable Acceptance |
|----------------|----------|------------------------|------------|------------------|
| PXEB5420MM4045 | 4        | Multimode              | OM1 & OM3  | 4.0mm – 4.5mm    |
| PXEB5420MM4550 | 4        | Multimode              | OM1 & OM3  | 4.5mm – 5.0mm    |
| PXEB5420MM5055 | 4        | Multimode              | OM1 & OM3  | 5.0mm – 5.5mm    |
| PXEB5420MM5560 | 4        | Multimode              | OM1 & OM3  | 5.5mm – 6.0mm    |

2 Channel Plug to Plug Connector  
Cable Assembly



PXEB5201B005

- Two-terminated Plug Connectors with a 2-Channel Outdoor Tactical Cable
- OM1 or OM3 Fibre Type Options
- 5 – 450m Cable Length Options
- Dust Cap & Lanyard included for each Connector
- Mates with Plug, Jam Nut, & Flange Mount Connectors (hermaphroditic)
- Available in 4 Channels
- Available in Plug to LC & Plug to SC Cable Assembly



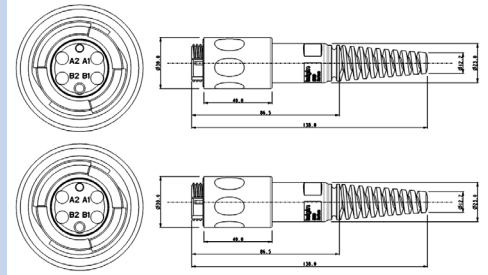
| Part Number  | Channels | Multimode / Singlemode | Fibre Type | Cable Length | Termination  |
|--------------|----------|------------------------|------------|--------------|--------------|
| PXEB5201B005 | 2        | Multimode              | OM1        | 5m           | Plug to Plug |
| PXEB5201C005 | 2        | Multimode              | OM3        | 5m           | Plug to Plug |
| PXEB5201B010 | 2        | Multimode              | OM1        | 10m          | Plug to Plug |
| PXEB5201C010 | 2        | Multimode              | OM3        | 10m          | Plug to Plug |
| PXEB5201B015 | 2        | Multimode              | OM1        | 15m          | Plug to Plug |
| PXEB5201C015 | 2        | Multimode              | OM3        | 15m          | Plug to Plug |
| PXEB5201B025 | 2        | Multimode              | OM1        | 25m          | Plug to Plug |
| PXEB5201C025 | 2        | Multimode              | OM3        | 25m          | Plug to Plug |
| PXEB5201B050 | 2        | Multimode              | OM1        | 50m          | Plug to Plug |
| PXEB5201C050 | 2        | Multimode              | OM3        | 50m          | Plug to Plug |
| PXEB5201B100 | 2        | Multimode              | OM1        | 100m         | Plug to Plug |
| PXEB5201C100 | 2        | Multimode              | OM3        | 100m         | Plug to Plug |
| PXEB5201B200 | 2        | Multimode              | OM1        | 200m         | Plug to Plug |
| PXEB5201C200 | 2        | Multimode              | OM3        | 200m         | Plug to Plug |
| PXEB5201B300 | 2        | Multimode              | OM1        | 300m         | Plug to Plug |
| PXEB5201C300 | 2        | Multimode              | OM3        | 300m         | Plug to Plug |
| PXEB5201B450 | 2        | Multimode              | OM1        | 450m         | Plug to Plug |
| PXEB5201C450 | 2        | Multimode              | OM3        | 450m         | Plug to Plug |

4 Channel Plug to Plug Connector  
Cable Assembly



PXEB5401B005

- Two-terminated Plug Connectors with a 4-Channel Outdoor Tactical Cable
- OM1 or OM3 Fibre Type Options
- 5 – 450m Cable Length Options
- Dust Cap & Lanyard included for each Connector
- Mates with Plug, Jam Nut, & Flange Mount Connectors (hermaphroditic)
- Available in 2 Channels
- Available in Plug to LC & Plug to SC Cable Assembly



| Part Number  | Channels | Multimode / Singlemode | Fibre Type | Cable Length | Termination  |
|--------------|----------|------------------------|------------|--------------|--------------|
| PXEB5401B005 | 4        | Multimode              | OM1        | 5m           | Plug to Plug |
| PXEB5401C005 | 4        | Multimode              | OM3        | 5m           | Plug to Plug |
| PXEB5401B010 | 4        | Multimode              | OM1        | 10m          | Plug to Plug |
| PXEB5401C010 | 4        | Multimode              | OM3        | 10m          | Plug to Plug |
| PXEB5401B015 | 4        | Multimode              | OM1        | 15m          | Plug to Plug |
| PXEB5401C015 | 4        | Multimode              | OM3        | 15m          | Plug to Plug |
| PXEB5401B025 | 4        | Multimode              | OM1        | 25m          | Plug to Plug |
| PXEB5401C025 | 4        | Multimode              | OM3        | 25m          | Plug to Plug |
| PXEB5401B050 | 4        | Multimode              | OM1        | 50m          | Plug to Plug |
| PXEB5401C050 | 4        | Multimode              | OM3        | 50m          | Plug to Plug |
| PXEB5401B100 | 4        | Multimode              | OM1        | 100m         | Plug to Plug |
| PXEB5401C100 | 4        | Multimode              | OM3        | 100m         | Plug to Plug |
| PXEB5401B200 | 4        | Multimode              | OM1        | 200m         | Plug to Plug |
| PXEB5401C200 | 4        | Multimode              | OM3        | 200m         | Plug to Plug |
| PXEB5401B300 | 4        | Multimode              | OM1        | 300m         | Plug to Plug |
| PXEB5401C300 | 4        | Multimode              | OM3        | 300m         | Plug to Plug |
| PXEB5401B450 | 4        | Multimode              | OM1        | 450m         | Plug to Plug |
| PXEB5401C450 | 4        | Multimode              | OM3        | 450m         | Plug to Plug |

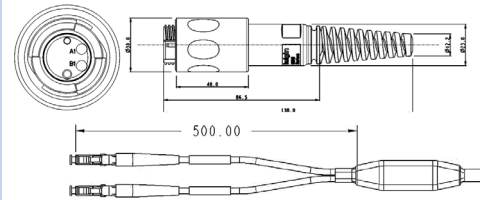


2 Channel Plug to LC Connector  
Cable Assembly



PXEB5202B005

- A Terminated Plug Connector with a 2-Channel Outdoor Tactical Cable that breaks out in 2 independent cables (0.5m long) with LC Terminations
- OM1 or OM3 Fibre Type Options
- 5 – 450m Cable Length Options
- Dust Caps for all Connectors & Plug Lanyard included
- Mates with Plug, Jam Nut, & Flange Mount Connectors (hermaphroditic)
- Available in 4 Channels
- Available in Plug to Plug & Plug to SC Cable Assembly



| Part Number  | Channels | Multimode / Singlemode | Fibre Type | Cable Length | Termination |
|--------------|----------|------------------------|------------|--------------|-------------|
| PXEB5202B005 | 2        | Multimode              | OM1        | 5m           | Plug to LC  |
| PXEB5202C005 | 2        | Multimode              | OM3        | 5m           | Plug to LC  |
| PXEB5202B010 | 2        | Multimode              | OM1        | 10m          | Plug to LC  |
| PXEB5202C010 | 2        | Multimode              | OM3        | 10m          | Plug to LC  |
| PXEB5202B015 | 2        | Multimode              | OM1        | 15m          | Plug to LC  |
| PXEB5202C015 | 2        | Multimode              | OM3        | 15m          | Plug to LC  |
| PXEB5202B025 | 2        | Multimode              | OM1        | 25m          | Plug to LC  |
| PXEB5202C025 | 2        | Multimode              | OM3        | 25m          | Plug to LC  |
| PXEB5202B050 | 2        | Multimode              | OM1        | 50m          | Plug to LC  |
| PXEB5202C050 | 2        | Multimode              | OM3        | 50m          | Plug to LC  |
| PXEB5202B100 | 2        | Multimode              | OM1        | 100m         | Plug to LC  |
| PXEB5202C100 | 2        | Multimode              | OM3        | 100m         | Plug to LC  |
| PXEB5202B200 | 2        | Multimode              | OM1        | 200m         | Plug to LC  |
| PXEB5202C200 | 2        | Multimode              | OM3        | 200m         | Plug to LC  |
| PXEB5202B300 | 2        | Multimode              | OM1        | 300m         | Plug to LC  |
| PXEB5202C300 | 2        | Multimode              | OM3        | 300m         | Plug to LC  |
| PXEB5202B450 | 2        | Multimode              | OM1        | 450m         | Plug to LC  |
| PXEB5202C450 | 2        | Multimode              | OM3        | 450m         | Plug to LC  |

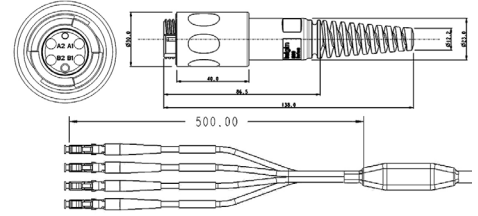


4 Channel Plug to LC Connector  
Cable Assembly



PXEB5402B005

- A Terminated Plug Connector with a 4-Channel Outdoor Tactical Cable that breaks out in 4 independent cables (0.5m long) with LC Terminations
- OM1 or OM3 Fibre Type Options
- 5 – 450m Cable Length Options
- Dust Caps for all Connectors & Plug Lanyard included
- Mates with Plug, Jam Nut, & Flange Mount Connectors (hermaphroditic)
- Available in 2 Channels
- Available in Plug to Plug & Plug to SC Cable Assembly



| Part Number  | Channels | Multimode / Singlemode | Fibre Type | Cable Length | Termination |
|--------------|----------|------------------------|------------|--------------|-------------|
| PXEB5402B005 | 4        | Multimode              | OM1        | 5m           | Plug to LC  |
| PXEB5402C005 | 4        | Multimode              | OM3        | 5m           | Plug to LC  |
| PXEB5402B010 | 4        | Multimode              | OM1        | 10m          | Plug to LC  |
| PXEB5402C010 | 4        | Multimode              | OM3        | 10m          | Plug to LC  |
| PXEB5402B015 | 4        | Multimode              | OM1        | 15m          | Plug to LC  |
| PXEB5402C015 | 4        | Multimode              | OM3        | 15m          | Plug to LC  |
| PXEB5402B025 | 4        | Multimode              | OM1        | 25m          | Plug to LC  |
| PXEB5402C025 | 4        | Multimode              | OM3        | 25m          | Plug to LC  |
| PXEB5402B050 | 4        | Multimode              | OM1        | 50m          | Plug to LC  |
| PXEB5402C050 | 4        | Multimode              | OM3        | 50m          | Plug to LC  |
| PXEB5402B100 | 4        | Multimode              | OM1        | 100m         | Plug to LC  |
| PXEB5402C100 | 4        | Multimode              | OM3        | 100m         | Plug to LC  |
| PXEB5402B200 | 4        | Multimode              | OM1        | 200m         | Plug to LC  |
| PXEB5402C200 | 4        | Multimode              | OM3        | 200m         | Plug to LC  |
| PXEB5402B300 | 4        | Multimode              | OM1        | 300m         | Plug to LC  |
| PXEB5402C300 | 4        | Multimode              | OM3        | 300m         | Plug to LC  |
| PXEB5402B450 | 4        | Multimode              | OM1        | 450m         | Plug to LC  |
| PXEB5402C450 | 4        | Multimode              | OM3        | 450m         | Plug to LC  |

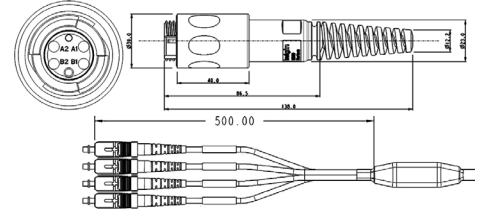


4 Channel Plug to SC Connector  
Cable Assembly



PXEB5403B005

- A Terminated Plug Connector with a 4-Channel Outdoor Tactical Cable that breaks out in 4 independent cables (0.5m long) with SC Terminations
- OM1 or OM3 Fibre Type Options
- 5 – 450m Cable Length Options
- Dust Caps for all Connectors & Plug Lanyard included
- Mates with Plug, Jam Nut, & Flange Mount Connectors (hermaphroditic)
- Available in 2 Channels
- Available in Plug to Plug & Plug to LC Cable Assembly



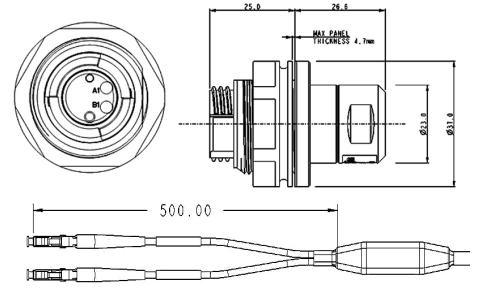
| Part Number  | Channels | Multimode / Singlemode | Fibre Type | Cable Length | Termination |
|--------------|----------|------------------------|------------|--------------|-------------|
| PXEB5403B005 | 4        | Multimode              | OM1        | 5m           | Plug to SC  |
| PXEB5403C005 | 4        | Multimode              | OM3        | 5m           | Plug to SC  |
| PXEB5403B010 | 4        | Multimode              | OM1        | 10m          | Plug to SC  |
| PXEB5403C010 | 4        | Multimode              | OM3        | 10m          | Plug to SC  |
| PXEB5403B015 | 4        | Multimode              | OM1        | 15m          | Plug to SC  |
| PXEB5403C015 | 4        | Multimode              | OM3        | 15m          | Plug to SC  |
| PXEB5403B025 | 4        | Multimode              | OM1        | 25m          | Plug to SC  |
| PXEB5403C025 | 4        | Multimode              | OM3        | 25m          | Plug to SC  |
| PXEB5403B050 | 4        | Multimode              | OM1        | 50m          | Plug to SC  |
| PXEB5403C050 | 4        | Multimode              | OM3        | 50m          | Plug to SC  |
| PXEB5403B100 | 4        | Multimode              | OM1        | 100m         | Plug to SC  |
| PXEB5403C100 | 4        | Multimode              | OM3        | 100m         | Plug to SC  |
| PXEB5403B200 | 4        | Multimode              | OM1        | 200m         | Plug to SC  |
| PXEB5403C200 | 4        | Multimode              | OM3        | 200m         | Plug to SC  |
| PXEB5403B300 | 4        | Multimode              | OM1        | 300m         | Plug to SC  |
| PXEB5403C300 | 4        | Multimode              | OM3        | 300m         | Plug to SC  |
| PXEB5403B450 | 4        | Multimode              | OM1        | 450m         | Plug to SC  |
| PXEB5403C450 | 4        | Multimode              | OM3        | 450m         | Plug to SC  |

2 Channel Jam Nut to LC Connector  
Cable Assembly



PXEB5212B001

- A Terminated Jam Nut Bulkhead (JNBH) Connector with 2 LC terminated independent cables
- OM1 or OM3 Fibre Type Options
- 1, 2 & 5m Cable Length Options
- Dust Caps for all Connectors & Jam Nut Lanyard included
- Mates with Plug Connectors (hermaphroditic)
- Maximum Panel Thickness – 4.7mm
- Available in 4 Channels
- Available in Jam Nut to SC Cable Assembly



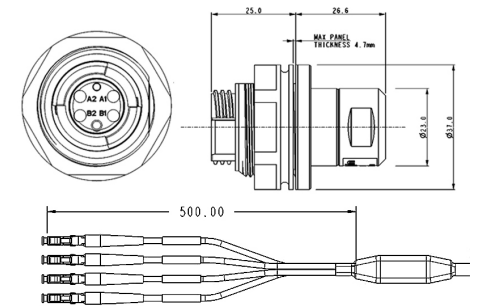
| Part Number  | Channels | Multimode / Singlemode | Fibre Type | Cable Length | Termination |
|--------------|----------|------------------------|------------|--------------|-------------|
| PXEB5212B001 | 2        | Multimode              | OM1        | 1m           | JNBH to LC  |
| PXEB5212C001 | 2        | Multimode              | OM3        | 1m           | JNBH to LC  |
| PXEB5212B002 | 2        | Multimode              | OM1        | 2m           | JNBH to LC  |
| PXEB5212C002 | 2        | Multimode              | OM3        | 2m           | JNBH to LC  |
| PXEB5212B005 | 2        | Multimode              | OM1        | 5m           | JNBH to LC  |
| PXEB5212C005 | 2        | Multimode              | OM3        | 5m           | JNBH to LC  |

4 Channel Jam Nut to LC Connector  
Cable Assembly



PXEB5412B001

- A Terminated Jam Nut Bulkhead (JNBH) Connector with 4 LC terminated independent cables
- OM1 or OM3 Fibre Type Options
- 1, 2 & 5m Cable Length Options
- Dust Caps for all Connectors & Jam Nut Lanyard included
- Mates with Plug Connectors (hermaphroditic)
- Maximum Panel Thickness – 4.7mm
- Available in 2 Channels
- Available in Jam Nut to SC Cable Assembly



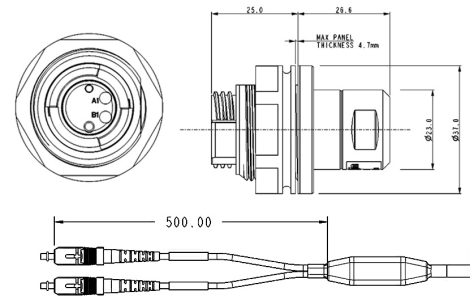
| Part Number  | Channels | Multimode / Singlemode | Fibre Type | Cable Length | Termination |
|--------------|----------|------------------------|------------|--------------|-------------|
| PXEB5412B001 | 4        | Multimode              | OM1        | 1m           | JNBH to LC  |
| PXEB5412C001 | 4        | Multimode              | OM3        | 1m           | JNBH to LC  |
| PXEB5412B002 | 4        | Multimode              | OM1        | 2m           | JNBH to LC  |
| PXEB5412C002 | 4        | Multimode              | OM3        | 2m           | JNBH to LC  |
| PXEB5412B005 | 4        | Multimode              | OM1        | 5m           | JNBH to LC  |
| PXEB5412C005 | 4        | Multimode              | OM3        | 5m           | JNBH to LC  |

2 Channel Jam Nut to SC Connector  
Cable Assembly



PXEB5213B001

- A Terminated Jam Nut Bulkhead (JNBH) Connector with 2 SC terminated independent cables
- OM1 or OM3 Fibre Type Options
- 1, 2 & 5m Cable Length Options
- Dust Caps for all Connectors & Jam Nut Lanyard included
- Mates with Plug Connectors (hermaphroditic)
- Maximum Panel Thickness – 4.7mm
- Available in 4 Channels
- Available in Jam Nut to LC Cable Assembly



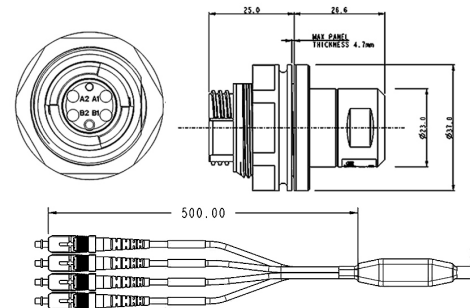
| Part Number  | Channels | Multimode / Singlemode | Fibre Type | Cable Length | Termination |
|--------------|----------|------------------------|------------|--------------|-------------|
| PXEB5213B001 | 2        | Multimode              | OM1        | 1m           | JNBH to SC  |
| PXEB5213C001 | 2        | Multimode              | OM3        | 1m           | JNBH to SC  |
| PXEB5213B002 | 2        | Multimode              | OM1        | 2m           | JNBH to SC  |
| PXEB5213C002 | 2        | Multimode              | OM3        | 2m           | JNBH to SC  |
| PXEB5213B005 | 2        | Multimode              | OM1        | 5m           | JNBH to SC  |
| PXEB5213C005 | 2        | Multimode              | OM3        | 5m           | JNBH to SC  |

4 Channel Jam Nut to SC Connector  
Cable Assembly



PXEB5413B001

- A Terminated Jam Nut Bulkhead (JNBH) Connector with 4 SC terminated independent cables
- OM1 or OM3 Fibre Type Options
- 1, 2 & 5m Cable Length Options
- Dust Caps for all Connectors & Jam Nut Lanyard included
- Mates with Plug Connectors (hermaphroditic)
- Maximum Panel Thickness – 4.7mm
- Available in 2 Channels
- Available in Jam Nut to LC Cable Assembly



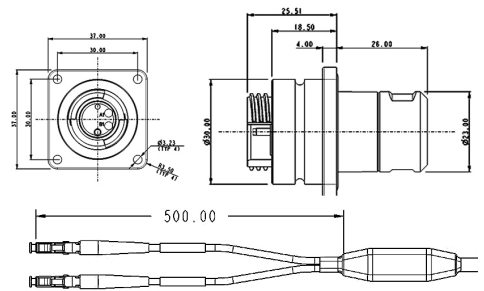
| Part Number  | Channels | Multimode / Singlemode | Fibre Type | Cable Length | Termination |
|--------------|----------|------------------------|------------|--------------|-------------|
| PXEB5413B001 | 4        | Multimode              | OM1        | 1m           | JNBH to SC  |
| PXEB5413C001 | 4        | Multimode              | OM3        | 1m           | JNBH to SC  |
| PXEB5413B002 | 4        | Multimode              | OM1        | 2m           | JNBH to SC  |
| PXEB5413C002 | 4        | Multimode              | OM3        | 2m           | JNBH to SC  |
| PXEB5413B005 | 4        | Multimode              | OM1        | 5m           | JNBH to SC  |
| PXEB5413C005 | 4        | Multimode              | OM3        | 5m           | JNBH to SC  |

2 Channel Flange Mount to LC Connector  
Cable Assembly



PXEB5222B001

- A Terminated Flange Mount Bulkhead (FMBH) Connector with 2 LC terminated independent cables
- OM1 or OM3 Fibre Type Options
- 1, 2 & 5m Cable Length Options
- Dust Caps for all Connectors & Flange Mount Lanyard included
- Mates with Plug Connectors (hermaphroditic)
- Available in 4 Channels
- Available in Jam Nut to SC Cable Assembly



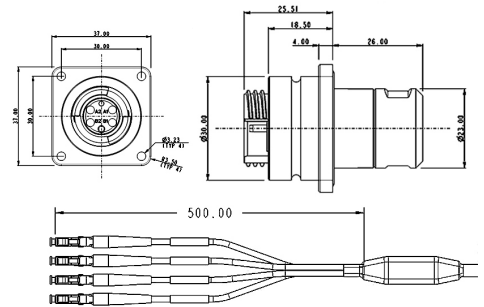
| Part Number  | Channels | Multimode / Singlemode | Fibre Type | Cable Length | Termination |
|--------------|----------|------------------------|------------|--------------|-------------|
| PXEB5222B001 | 2        | Multimode              | OM1        | 1m           | FMBH to LC  |
| PXEB5222C001 | 2        | Multimode              | OM3        | 1m           | FMBH to LC  |
| PXEB5222B002 | 2        | Multimode              | OM1        | 2m           | FMBH to LC  |
| PXEB5222C002 | 2        | Multimode              | OM3        | 2m           | FMBH to LC  |
| PXEB5222B005 | 2        | Multimode              | OM1        | 5m           | FMBH to LC  |
| PXEB5222C005 | 2        | Multimode              | OM3        | 5m           | FMBH to LC  |

4 Channel Flange Mount to LC Connector  
Cable Assembly



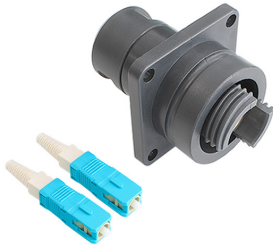
PXEB5422B001

- A Terminated Flange Mount Bulkhead (FMBH) Connector with 4 LC terminated independent cables
- OM1 or OM3 Fibre Type Options
- 1, 2 & 5m Cable Length Options
- Dust Caps for all Connectors & Flange Mount Lanyard included
- Mates with Plug Connectors (hermaphroditic)
- Available in 2 Channels
- Available in Jam Nut to SC Cable Assembly



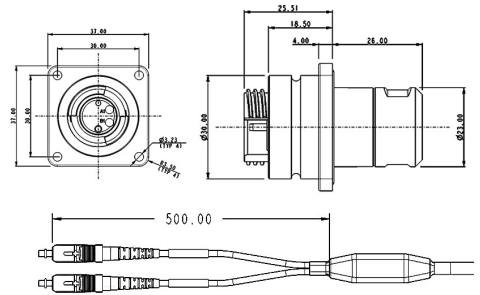
| Part Number  | Channels | Multimode / Singlemode | Fibre Type | Cable Length | Termination |
|--------------|----------|------------------------|------------|--------------|-------------|
| PXEB5422B001 | 4        | Multimode              | OM1        | 1m           | FMBH to LC  |
| PXEB5422C001 | 4        | Multimode              | OM3        | 1m           | FMBH to LC  |
| PXEB5422B002 | 4        | Multimode              | OM1        | 2m           | FMBH to LC  |
| PXEB5422C002 | 4        | Multimode              | OM3        | 2m           | FMBH to LC  |
| PXEB5422B005 | 4        | Multimode              | OM1        | 5m           | FMBH to LC  |
| PXEB5422C005 | 4        | Multimode              | OM3        | 5m           | FMBH to LC  |

2 Channel Flange Mount to SC Connector  
Cable Assembly



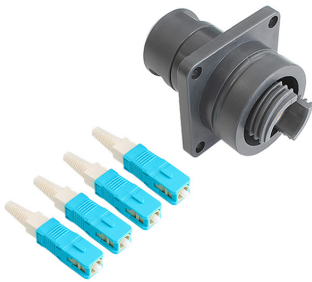
PXEB5223B001

- A Terminated Flange Mount Bulkhead (FMBH) Connector with 2 SC terminated independent cables
- OM1 or OM3 Fibre Type Options
- 1, 2 & 5m Cable Length Options
- Dust Caps for all Connectors & Flange Mount Lanyard included
- Mates with Plug Connectors (hermaphroditic)
- Available in 4 Channels
- Available in Jam Nut to LC Cable Assembly



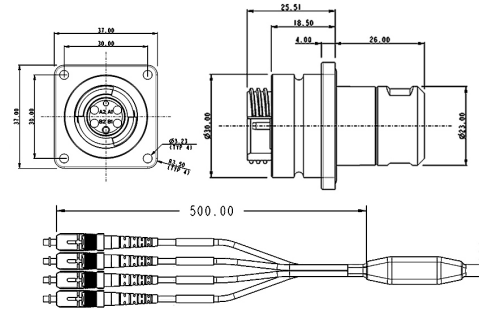
| Part Number  | Channels | Multimode / Singlemode | Fibre Type | Cable Length | Termination |
|--------------|----------|------------------------|------------|--------------|-------------|
| PXEB5223B001 | 2        | Multimode              | OM1        | 1m           | FMBH to SC  |
| PXEB5223C001 | 2        | Multimode              | OM3        | 1m           | FMBH to SC  |
| PXEB5223B002 | 2        | Multimode              | OM1        | 2m           | FMBH to SC  |
| PXEB5223C002 | 2        | Multimode              | OM3        | 2m           | FMBH to SC  |
| PXEB5223B005 | 2        | Multimode              | OM1        | 5m           | FMBH to SC  |
| PXEB5223C005 | 2        | Multimode              | OM3        | 5m           | FMBH to SC  |

4 Channel Flange Mount to SC Connector  
Cable Assembly



PXEB5423B001

- A Terminated Flange Mount Bulkhead (FMBH) Connector with 4 SC terminated independent cables
- OM1 or OM3 Fibre Type Options
- 1, 2 & 5m Cable Length Options
- Dust Caps for all Connectors & Flange Mount Lanyard included
- Mates with Plug Connectors (hermaphroditic)
- Available in 2 Channels
- Available in Jam Nut to LC Cable Assembly



| Part Number  | Channels | Multimode / Singlemode | Fibre Type | Cable Length | Termination |
|--------------|----------|------------------------|------------|--------------|-------------|
| PXEB5423B001 | 4        | Multimode              | OM1        | 1m           | FMBH to SC  |
| PXEB5423C001 | 4        | Multimode              | OM3        | 1m           | FMBH to SC  |
| PXEB5423B002 | 4        | Multimode              | OM1        | 2m           | FMBH to SC  |
| PXEB5423C002 | 4        | Multimode              | OM3        | 2m           | FMBH to SC  |
| PXEB5423B005 | 4        | Multimode              | OM1        | 5m           | FMBH to SC  |
| PXEB5423C005 | 4        | Multimode              | OM3        | 5m           | FMBH to SC  |

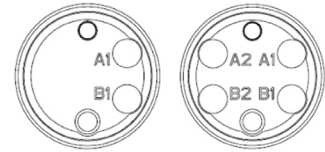


Channel Inserts



PXEB5280

- Allows Plug, Jam Nut & Flange Mount to be re-terminated with 2 or 4 Channel Insert
- Ferrules (termini) included to terminate the Fibre



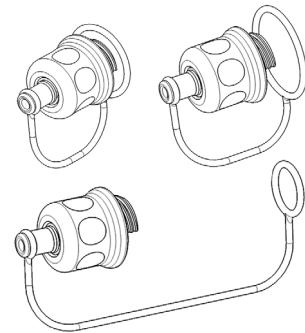
| Part No  | Description                             |
|----------|---|
| PXEB5280 | 2 Channel Expanded Beam Insert Assembly |
| PXEB5480 | 4 Channel Expanded Beam Insert Assembly |

Dust Caps



PXEB5080

- Dust Caps do not have an effect on IP68 rating as Plug, Jam Nut & Flange Mount Bulkhead are sealed without the Dust Cap
- Lanyard Included
- Different Lanyard for different Connectors but same Dust Cap



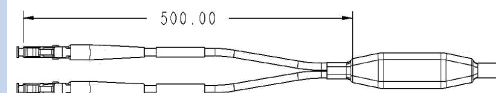
| Part No  | Description                        |
|----------|------------------------------------|
| PXEB5080 | Dust Cap for Plug                  |
| PXEB5081 | Dust Cap for Jam Nut Bulkhead      |
| PXEB5082 | Dust Cap for Flange Mount Bulkhead |

LC & SC Termination Kit



PXEB5086

- Kit to terminate Plug & Jam Nut with Cable Acceptance Connector
- The kit includes: breakout tube parts, heat shrink cover, 500mm furcation tubes, & LC or SC Connectors
- Potting Compound is sold separately (PXEB5079)
- Beige - OM1
- Aqua - OM3



| Part No  | Cable Diameter | Description                                     |
|----------|----------------|---|
| PXEB5084 | 4-5mm          | 2 Channel Termination Kit (4-5mm) with LC (OM1) |
| PXEB5085 | 4-5mm          | 4 Channel Termination Kit (4-5mm) with LC (OM1) |
| PXEB5086 | 4-5mm          | 2 Channel Termination Kit (4-5mm) with SC (OM1) |
| PXEB5087 | 4-5mm          | 4 Channel Termination Kit (4-5mm) with SC (OM1) |
| PXEB5088 | 4-5mm          | 2 Channel Termination Kit (4-5mm) with LC (OM3) |
| PXEB5089 | 4-5mm          | 4 Channel Termination Kit (4-5mm) with LC (OM3) |
| PXEB5090 | 4-5mm          | 2 Channel Termination Kit (4-5mm) with SC (OM3) |
| PXEB5091 | 4-5mm          | 4 Channel Termination Kit (4-5mm) with SC (OM3) |
| PXEB5092 | 5-6mm          | 2 Channel Termination Kit (5-6mm) with LC (OM1) |
| PXEB5093 | 5-6mm          | 4 Channel Termination Kit (5-6mm) with LC (OM1) |
| PXEB5094 | 5-6mm          | 2 Channel Termination Kit (5-6mm) with SC (OM1) |
| PXEB5095 | 5-6mm          | 4 Channel Termination Kit (5-6mm) with SC (OM1) |
| PXEB5096 | 5-6mm          | 2 Channel Termination Kit (5-6mm) with LC (OM3) |
| PXEB5097 | 5-6mm          | 4 Channel Termination Kit (5-6mm) with LC (OM3) |
| PXEB5098 | 5-6mm          | 2 Channel Termination Kit (5-6mm) with SC (OM3) |
| PXEB5099 | 5-6mm          | 4 Channel Termination Kit (5-6mm) with SC (OM3) |

Fibre Cable Crimp Tool



PXEB5083

- For terminating the Inner & Outer Crimp to the Fibre Cable
- Necessary for fixing the Cable to the Plug, Jam Nut & Flange Mount Bulkhead Connectors
- Die Set included

**Part No**

**Description**

PXEB5083

Cable Crimp Tool for Plug, Jam Nut & Flange Mount Bulkhead Connectors

Potting Compound



PXEB5079

- Potting Compound for use with Termination Kits
- Standard Cartridge that fits standard guns - 50ml
- Place 4ml inside the Breakout body through the two holes in the lid

**Part No**

**Description**

PXEB5079

Potting Compound for Breakout Termination

1ml Matching Index Gel Syringe



PXEB5078

- Matching Index Gel to improve the performance of Plug, Jam Nut & Flange Mount Connector
- A drop to be applied at the end of each ferrule (termini) that goes into the Expanded Beam Connector
- Refractive Index 1.71

**Part No**

**Description**

PXEB5078

1ml Matching Index Gel Syringe

**Mechanical:**

|                        |   |
|------------------------|---|
| Sealing:               | IP68, EN60529: 1992+ A2:2013                                    |
| Panel Mount Nut:       | 1,0-1, 1Nm (91lb.in)  |
| Operating temperature: | -50°C to +80°C  |
| Salt Mist:             | EN60068-2-52 Test Kb Salt Mist (Cyclic) Marine Severity Level 1 |

**Material:**

|                       |                   |
|-----------------------|-------------------|
| Body Mouldings:       | Polyamide         |
| Flammability Rating:  | UL94v-0           |
| UV Resistance:        | To EN 500021:1999 |
| O Rings:              | Silicone          |
| Panel Sealing O Ring: | Silicone          |
| RoHS                  | Compliant         |

Plug Connector Designed to MIL-DTL-83525/20C specifications  
 Jam Nut Connector Designed to MIL-DTL-83525/21C specifications

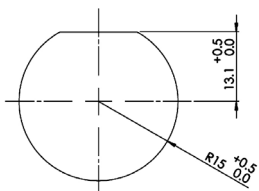
**Optical:**

|                     |        |
|---------------------|--------|
| IEC 61753-1:        |        |
| Max Insertion Loss: | <2dB   |
| AVG Insertion Loss: | <1.5dB |

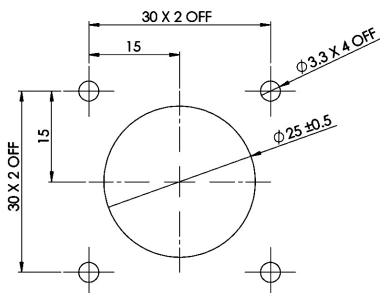
| <b>2 Channel Termination Table:</b> | <b>P1 Connector Channel:</b> | <b>Fibre Colour:</b> | <b>P2 Connector Channel:</b> |
|-------------------------------------|------------------------------|----------------------|------------------------------|
|                                     | A1                           | BLUE                 | B1                           |
|                                     | B1                           | ORANGE               | A1                           |

| <b>4 Channel Termination Table:</b> | <b>P1 Connector Channel:</b> | <b>Fibre Colour:</b> | <b>P2 Connector Channel:</b> |
|-------------------------------------|------------------------------|----------------------|------------------------------|
|                                     | A1                           | BLUE                 | B1                           |
|                                     | B1                           | ORANGE               | A1                           |
|                                     | A2                           | GREEN                | B2                           |
|                                     | B2                           | BROWN                | A2                           |

**Jam Nut Bulkhead Panel Mount Cut out:**



**Flange Mount Bulkhead Panel Mount Cut out:**



**OM1**

| <b>Item:</b>   | <b>Detail:</b>  | <b>Specification:</b>  |
|--|---|--|
| Fiber:   | Type<br>Channels  | 62.5um/125um (OM1)<br>2 or 4                                   |
| Channel Diameter:  | Dimension   | 62.5um   |
| Cladding Diameter:                                       | Dimension   | 125um  |
| Buffer:  | Construction<br>Material<br>Diameter  | Tight<br>Nylon<br>0.9mm  |
| Outer Jacket:  | Material<br>Colour<br>Outer Diameter<br>Ripcord   | PUR<br>Black<br>5.4mm (2 Channel) 5.8mm (4 Channel)<br>1       |
| Max Attenuation:   | at 850nm<br>at 1300nm   | 3.4dB/km<br>1.2dB/km   |
| Temperature Range:                                       | Operating Temp<br>Installation Temp<br>Storage Temp   | -70 °C to +85 °C<br>-5 °C to +50 °C<br>-70 °C to +85 °C        |
| Cable Min. Bend Radius<br>Installation (Short Term)      | IEC 60794-1-21-E6   | 43.2 mm  |
| Cable Min. Bend Radius<br>Operation (Long Term)          | IEC 60794-1-21-E11  | 21.6 mm  |
| Cable Max. Tensile Strength<br>Installation (Short Term) | IEC 60794-1-21-E1   | 400 N (90 lbf)   |
| Cable Max. Crush Resistance<br>Installation (Short Term) | IEC 60794-1-21-E3   | 5 kN/m   |
| Cable Max. Crush Resistance<br>Operation (Long Term)     | IEC 60794-1-21-E3   | 3 kN/m   |
| Standards:   | UL Rating/Flame Test<br>REACH<br>IEC Compliance<br>EU Directive 2011/65/EU<br>(RoHS 2)<br>UV/ Sunlight Protection | Non-UL Rated<br>Compliant<br>IEC 60794<br>Compliant<br><br>Yes |

**OM3**

| <b>Item:</b>   | <b>Detail:</b>  | <b>Specification:</b>   |
|--|---|---|
| Fiber:   | Type<br>Count   | 50um/125um (OM3)<br>2 or 4  |
| Channel Diameter:<br>Cladding Diameter:                  | Dimension<br>Dimension  | 50um<br>125um   |
| Buffer:  | Construction<br>Material<br><br>Diameter  | Tight<br>Nylon (2 Channel)<br>Polyamide (4 Channel)<br>0.9mm  |
| Outer Jacket:  | Material<br>Colour<br>Outer Diameter<br><br>Ripcord   | PUR<br>Black<br>5.4mm (2 Channel)<br>5.8mm (4 Channel)<br>1   |
| Max Attenuation:   | at 850nm<br>at 1300nm   | 2.9dB/<br>km<br>1.0dB/km  |
| Temperature Range:                                       | Operating Temp<br><br>Installation Temp<br><br>Storage Temp   | -70 °C to +85 °C (2 Channel)<br>-55 °C to +85 °C (4 Channel)<br>-5 °C to +50 °C (2 Channel)<br>-15 °C to +50 °C (4 Channel)<br>-70 °C to +85 °C (2 Channel)<br>-30 °C to +70 °C (4 Channel) |
| Cable Min. Bend Radius<br>Installation (Short Term)      | IEC 60794-1-21-E6   | 43.2 mm (2 Channel)<br>46.4 mm (4 Channel)  |
| Cable Min. Bend Radius<br>Operation (Long Term)          | IEC 60794-1-21-E11  | 21.6 mm (2 Channel)<br>23.2 mm (4 Channel)  |
| Cable Max. Tensile Strength<br>Installation (Short Term) | IEC 60794-1-21-E1   | 400 N (90 lbf)  |
| Cable Max. Crush Resistance<br>Installation (Short Term) | IEC 60794-1-21-E3   | 5 kN/m  |
| Cable Max. Crush Resistance<br>Operation (Long Term)     | IEC 60794-1-21-E3   | 3 kN/m  |
| Standards:   | UL Rating/Flame Test<br>REACH<br>IEC Compliance<br>EU Directive 2011/65/EU<br>(RoHS 2)<br>UV/ Sunlight Protection | Non-UL Rated<br>Compliant<br>IEC 60794<br>Compliant<br><br>Yes  |