

THREADED BODY

Zinc-plated steel.

PLUNGER

AISI 303 stainless steel.

KNOB

Polyamide based (PA) technopolymer, black colour, matte finish.

STANDARD EXECUTIONS

- **GN 822.6-B:** without rest position.
- **GN 822.6-C:** with rest position: pull the knob and turn it by 30°.

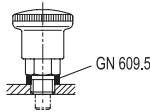
FEATURES AND APPLICATIONS

GN 822.6 mini indexing plungers are particularly suitable for assembly on thin sheets.

When retracting the plunger, the hexagonal flat faces are visible. Hence the mini indexing plunger can be easily assembled and tightened by means of a hexagonal spanner.

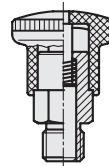
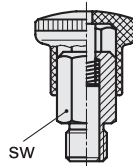
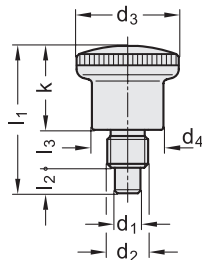
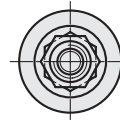
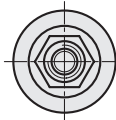
ACCESSORIES ON REQUEST

AISI 303 stainless steel distance bushings GN 609.5 (see page 906) for the assembly of the indexing plunger on thin sheets.



GN 822.6-B

GN 822.6-C



Code	Description	d1 Plunger h9 Hole +0.08 +0.03	d2	d3	d4	k	l1	l2	l3	sw	Spring preload [N]	Spring max load [N]	
GN.36451	GN 822.6-4-M8x1-B	4	M8x1	21	15	16.5	27.5	5	6	10	4	12	14
GN.36456	GN 822.6-5-M10x1-B	5	M10x1	25	18	20	34	6	8	12	6	16	25
GN.36461	GN 822.6-6-M10x1-B	6	M10x1	25	18	20	34	6	8	12	6	16	25
GN.36465	GN 822.6-6-M12x1.5-B	6	M12x1.5	28	20	23.5	40.5	7	10	14	10	23	30
GN.36471	GN 822.6-7-M12x1.5-B	7	M12x1.5	28	20	23.5	40.5	7	10	14	10	23	30
GN.36476	GN 822.6-8-M16x1.5-B	8	M16x1.5	33	23	25.5	47.5	10	12	17	11	35	67
GN.36481	GN 822.6-10-M16x1.5-B	10	M16x1.5	33	23	25.5	47.5	10	12	17	11	35	70
GN.36453	GN 822.6-4-M8x1-C	4	M8x1	21	15	16.5	27.5	5	6	10	4	12	14
GN.36457	GN 822.6-5-M10x1-C	5	M10x1	25	18	20	34	6	8	12	6	16	24
GN.36463	GN 822.6-6-M10x1-C	6	M10x1	25	18	20	34	6	8	12	6	16	24
GN.36467	GN 822.6-6-M12x1.5-C	6	M12x1.5	28	20	23.5	40.5	7	10	14	10	23	29
GN.36472	GN 822.6-7-M12x1.5-C	7	M12x1.5	28	20	23.5	40.5	7	10	14	10	23	29
GN.36477	GN 822.6-8-M16x1.5-C	8	M16x1.5	33	23	25.5	47.5	10	12	17	11	35	65
GN.36483	GN 822.6-10-M16x1.5-C	10	M16x1.5	33	23	25.5	47.5	10	12	17	11	35	67



Indexing and positioning elements