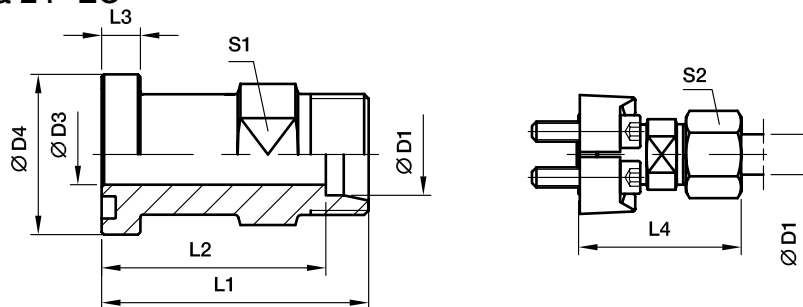


GFS Adapter kołnierzowy prosty SAE

Kołnierz SAE / Końcówka stożkowa 24° EO
(ISO 6162-1/-2)



Seria 3000 PSI

| Nom. wiel. kołnierza | SAE (cale) | ISO (DN) | D1 ²⁾ | D3 | D4 | L1 | L2 | L3 | L4 | S1 | S2 | Śruby | | Ciężar (stal) kg/szt. | Kod zamawiania* | PN (bar) ¹⁾ | |
|----------------------|------------|----------|------------------|------|------|------|-----|------|----|----|--------|-----------------|---------------|----------------------------|-----------------|------------------------|----|
| | | | | | | | | | | | | z gwintem metr. | z gwintem UNC | | | CF | 71 |
| 1/2 | 13 | 15L | 12.0 | 30.2 | 48.0 | 41.0 | 6.7 | 56.0 | 24 | 27 | M 8x25 | 5/16x1 1/4 | 0.36 | GFS32/15L | 315 | 315 | |
| 1/2 | 13 | 16S | 12.0 | 30.2 | 50.0 | 41.5 | 6.7 | 60.0 | 24 | 30 | M 8x25 | 5/16x1 1/4 | 0.40 | GFS32/16S | 350 | 350 | |
| 1/2 | 13 | 18L | 14.0 | 30.2 | 50.0 | 42.5 | 6.7 | 61.0 | 19 | 32 | M 8x25 | 5/16x1 1/4 | 0.42 | GFS32/18L | 315 | 315 | |
| 3/4 | 19 | 16S | 12.0 | 38.1 | 55.0 | 46.5 | 6.7 | 64.5 | 27 | 30 | M10x30 | 3/8x1 1/4 | 0.52 | GFS33/16S | 350 | 350 | |
| 3/4 | 19 | 18L | 17.0 | 38.1 | 53.0 | 45.5 | 6.7 | 62.0 | 30 | 32 | M10x30 | 3/8x1 1/4 | 0.59 | GFS33/18L | 315 | 315 | |
| 3/4 | 19 | 22L | 19.0 | 38.1 | 53.0 | 45.5 | 6.7 | 62.0 | 30 | 36 | M10x30 | 3/8x1 1/4 | 0.59 | GFS33/22L | 160 | 160 | |
| 3/4 | 19 | 28L | 19.0 | 38.1 | 55.0 | 41.0 | 6.7 | 64.0 | 32 | 41 | M10x30 | 3/8x1 1/4 | 0.60 | GFS33/28L | 160 | 160 | |
| 3/4 | 19 | 20S | 17.0 | 38.1 | 57.0 | 46.5 | 6.7 | 68.0 | 30 | 36 | M10x30 | 3/8x1 1/4 | 0.65 | GFS33/20S | 350 | 350 | |
| 3/4 | 19 | 25S | 17.0 | 38.1 | 57.0 | 45.0 | 6.7 | 69.0 | 30 | 46 | M10x30 | 3/8x1 1/4 | 0.78 | GFS33/25S | 350 | 350 | |
| 1 | 25 | 20S | 25.0 | 44.5 | 60.0 | 48.5 | 8.0 | 71.0 | 32 | 36 | M10x30 | 3/8x1 1/4 | 0.70 | GFS34/20S | 350 | 350 | |
| 1 | 25 | 28L | 24.0 | 44.5 | 54.0 | 46.5 | 8.0 | 63.0 | 36 | 41 | M10x30 | 3/8x1 1/4 | 0.73 | GFS34/28L | 160 | 160 | |
| 1 | 25 | 25S | 20.0 | 44.5 | 58.0 | 46.5 | 8.0 | 60.0 | 36 | 46 | M10x30 | 3/8x1 1/4 | 0.84 | GFS34/25S | 350 | 350 | |
| 1 | 25 | 30S | 24.0 | 44.5 | 63.0 | 49.5 | 8.0 | 76.0 | 36 | 50 | M10x30 | 3/8x1 1/4 | 0.94 | GFS34/30S | 250 | 250 | |
| 1 | 25 | 42L | 24.0 | 44.5 | 76.0 | 65.0 | 8.0 | 87.5 | 41 | 60 | M10x30 | 3/8x1 1/4 | 0.95 | GFS34/42L | 160 | 160 | |
| 1 1/4 | 32 | 35L | 32.0 | 50.8 | 58.0 | 47.5 | 8.0 | 69.0 | 41 | 50 | M10x35 | - | 0.96 | GFS35/35L/10 ³⁾ | 160 | 160 | |
| 1 1/4 | 32 | 25S | 27.0 | 50.8 | 60.0 | 48.0 | 8.0 | 72.0 | 41 | 46 | M10x35 | - | 1.11 | GFS35/25S/10 | 200 | 200 | |
| 1 1/4 | 32 | 30S | 28.5 | 50.8 | 62.0 | 48.5 | 8.0 | 75.0 | 41 | 50 | M10x35 | - | 1.13 | GFS35/30S/10 | 200 | 200 | |
| 1 1/4 | 32 | 38S | 28.0 | 50.8 | 66.0 | 50.0 | 8.0 | 81.0 | 46 | 60 | M10x35 | - | 1.36 | GFS35/38S/10 | 200 | 200 | |
| 1 1/4 | 32 | 28L | 23.0 | 50.8 | 60.0 | 52.5 | 8.0 | 67.0 | 36 | 41 | M12x40 | 7/16x1 1/2 | 1.12 | GFS35/28L | 160 | 160 | |
| 1 1/4 | 32 | 35L | 32.0 | 50.8 | 58.0 | 47.5 | 8.0 | 69.0 | 41 | 50 | M12x40 | 7/16x1 1/2 | 1.02 | GFS35/35L | 160 | 160 | |
| 1 1/4 | 32 | 25S | 27.0 | 50.8 | 60.0 | 48.0 | 8.0 | 72.0 | 41 | 46 | M12x40 | 7/16x1 1/2 | 1.17 | GFS35/25S | 200 | 200 | |
| 1 1/4 | 32 | 30S | 28.5 | 50.8 | 62.0 | 48.5 | 8.0 | 75.0 | 41 | 50 | M12x40 | 7/16x1 1/2 | 1.20 | GFS35/30S | 200 | 200 | |
| 1 1/4 | 32 | 38S | 28.0 | 50.8 | 66.0 | 50.0 | 8.0 | 81.0 | 46 | 60 | M12x40 | 7/16x1 1/2 | 1.41 | GFS35/38S | 200 | 200 | |
| 1 1/2 | 38 | 35L | 30.0 | 60.3 | 65.0 | 54.5 | 8.0 | 76.0 | 46 | 50 | M12x35 | 1/2x1 1/2 | 1.20 | GFS36/35L | 160 | 160 | |
| 1 1/2 | 38 | 42L | 36.0 | 60.3 | 64.0 | 53.0 | 8.0 | 76.0 | 46 | 60 | M12x35 | 1/2x1 1/2 | 1.36 | GFS36/42L | 160 | 160 | |
| 1 1/2 | 38 | 38S | 32.0 | 60.3 | 70.0 | 54.0 | 8.0 | 85.0 | 46 | 60 | M12x35 | 1/2x1 1/2 | 1.63 | GFS36/38S | 200 | 200 | |

¹⁾ Jeśli w tabeli podano wartość ciśnienia, element jest w aktualnym programie produkcji.

²⁾ L = szereg lekki; S = szereg ciężki

$$\frac{PN \text{ (bar)}}{10} = PN \text{ (MPa)}$$

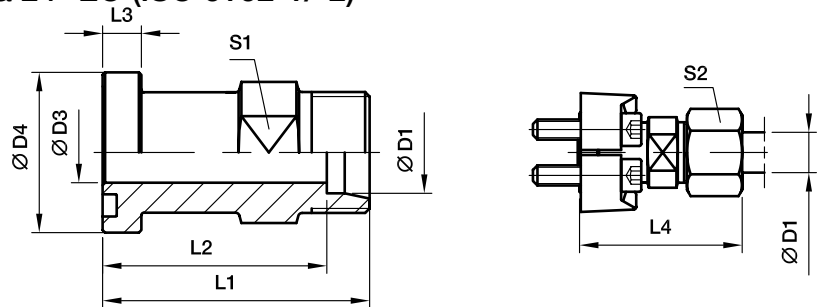
Dostawa bez nakrętki i pierścienia.

Informacje na temat zamawiania kompletnych łączników lub alternatywnych materiałów uszczelniających - patrz str. M11.

³⁾ Kod zamawiania dla adaptera kołnierzowego montowanego śrubami FHS35/10CFX i M10X35.

*Proszę dodać przyrostki zgodnie z wymaganym materiałem.

| Przyrostki kodu zamawiania | | | | | |
|---|--------------------------------------|------------------------------------|---|---|---|
| Materiał | Przyrostek - powierzchnia i materiał | Przykład tylko adapter kołnierzowy | Przykład łączenie z kołnierzami półkulkowymi, śrubami z gwintem metr. i pierścieniem O-ring | Przykład łączenie z kołnierzami półkulkowymi, śrubami z gwintem UNC i pierścieniem O-ring | Standardowy materiał uszczelniający (nie wymaga dodatkowego przyrostka) |
| Stal cynkowana galwanicznie bez chromu Cr(VI) | CF | GFS32/16SCFX | GFS32/16SOMDCF | GFS32/16SOMDCFU | NBR |
| Stal nierdzewna | 71 | GFS32/16S71X | GFS32/16SOMD71 | GFS32/16SOMD71U | VIT |

GFS Adapter kołnierzowy prosty SAE
**Kołnierz SAE / Końcówka stożkowa 24° EO (ISO 6162-1/-2)
(ISO 6162-1/-2)**

Seria 6000 PSI

| Nom. wiel. kołnierza | | D1 ²⁾ | | | | | | | | | Śruby | | Ciężar (stal) kg/szt. | Kod zamawiania* | PN (bar) ¹⁾ | |
|----------------------|----------|------------------|----|------|------|------|------|-------|----|----|-----------------|---------------|-----------------------|----------------------------|------------------------|-----|
| SAE (cale) | ISO (DN) | | D3 | D4 | L1 | L2 | L3 | L4 | S1 | S2 | z gwintem metr. | z gwintem UNC | | | CF | 71 |
| 1/2 | 13 | 12S | 8 | 31.8 | 50.0 | 42.5 | 7.7 | 57.5 | 19 | 24 | M 8x30 | 5/16x1 1/4 | 0.35 | GFS62/12S | 420 | 420 |
| 1/2 | 13 | 14S | 10 | 31.8 | 50.0 | 42.0 | 7.7 | 59.5 | 19 | 27 | M 8x30 | 5/16x1 1/4 | 0.39 | GFS62/14S | 420 | 420 |
| 1/2 | 13 | 16S | 12 | 31.8 | 53.0 | 44.5 | 7.7 | 62.5 | 24 | 30 | M 8x30 | 5/16x1 1/4 | 0.47 | GFS62/16S | 420 | 420 |
| 3/4 | 19 | 16S | 17 | 41.3 | 59.0 | 50.5 | 8.7 | 68.5 | 30 | 30 | M10x35 | 3/8x1 1/2 | 0.79 | GFS63/16S | 420 | 420 |
| 3/4 | 19 | 20S | 17 | 41.3 | 61.0 | 50.5 | 8.7 | 72.0 | 30 | 36 | M10x35 | 3/8x1 1/2 | 0.86 | GFS63/20S | 420 | 400 |
| 3/4 | 19 | 25S | 17 | 41.3 | 63.0 | 51.0 | 8.7 | 75.0 | 30 | 46 | M10x35 | 3/8x1 1/2 | 0.97 | GFS63/25S | 420 | 400 |
| 3/4 | 19 | 30S | 18 | 41.3 | 76.0 | 62.0 | 8.7 | 89.0 | 30 | 50 | M10x35 | 3/8x1 1/2 | 1.15 | GFS63/30S | 420 | 400 |
| 3/4 | 19 | 38S | 18 | 41.3 | 85.0 | 69.0 | 8.7 | 99.5 | 41 | 60 | M10x35 | 3/8x1 1/2 | 1.15 | GFS63/38S | 315 | 315 |
| 1 | 25 | 20S | 16 | 47.6 | 75.0 | 64.5 | 9.5 | 88.0 | 36 | 36 | M12x45 | 7/16x1 3/4 | 0.97 | GFS64/20S | 420 | 400 |
| 1 | 25 | 25S | 20 | 47.6 | 72.0 | 60.0 | 9.5 | 84.0 | 36 | 46 | M12x45 | 7/16x1 3/4 | 1.42 | GFS64/25S | 420 | 400 |
| 1 | 25 | 30S | 24 | 47.6 | 74.0 | 62.0 | 9.5 | 87.0 | 36 | 50 | M12x45 | 7/16x1 3/4 | 1.40 | GFS64/30S | 420 | 400 |
| 1 | 25 | 38S | 24 | 47.6 | 84.5 | 68.0 | 9.5 | 99.0 | 46 | 60 | M12x45 | 7/16x1 3/4 | 1.40 | GFS64/38S | 315 | 315 |
| 1 1/4 | 32 | 25S | 20 | 54.0 | 80.0 | 68.0 | 10.2 | 92.0 | 41 | 46 | M14x50 | 1/2x1 3/4 | 1.85 | GFS65/25S | 420 | 400 |
| 1 1/4 | 32 | 30S | 30 | 54.0 | 79.0 | 65.5 | 10.2 | 92.0 | 41 | 50 | M12x45 | - | 1.95 | GFS65/30S/12 ³⁾ | 420 | 400 |
| 1 1/4 | 32 | 38S | 30 | 54.0 | 83.0 | 67.0 | 10.2 | 97.5 | 46 | 60 | M12x45 | - | 2.16 | GFS65/38S/12 | 315 | 315 |
| 1 1/4 | 32 | 30S | 30 | 54.0 | 79.0 | 65.5 | 10.2 | 92.0 | 41 | 50 | M14x50 | 1/2x1 3/4 | 1.90 | GFS65/30S | 420 | 400 |
| 1 1/4 | 32 | 38S | 30 | 54.0 | 83.0 | 67.0 | 10.2 | 97.5 | 46 | 60 | M14x50 | 1/2x1 3/4 | 2.10 | GFS65/38S | 315 | 315 |
| 1 1/2 | 38 | 30S | 30 | 63.5 | 90.0 | 74.0 | 12.5 | 103.0 | 46 | 50 | M16x55 | 5/8x2 1/4 | 2.10 | GFS66/30S | 420 | 400 |
| 1 1/2 | 38 | 38S | 30 | 63.5 | 89.0 | 73.0 | 12.5 | 103.5 | 46 | 60 | M16x55 | 5/8x2 1/4 | 3.06 | GFS66/38S | 315 | 315 |

¹⁾Jeśli w tabeli podano wartość ciśnienia, element jest w aktualnym programie produkcji.

²⁾S = Szereg ciężki

$$\frac{\text{PN (bar)}}{10} = \text{PN (MPa)}$$

Dostawa bez nakrętki i pierścienia.
Informacje na temat zamawiania kompletnych łączników lub alternatywnych materiałów uszczelniających - patrz str. M11.
³⁾ Kod zamawiania dla adaptera kołnierzowego montowanego śrubami FHS65/12CFX i M12X45.

*Proszę dodać przyrostki zgodnie z wymaganym materiałem.

| Przyrostki kodu zamawiania | | | | | |
|---|--------------------------------------|------------------------------------|---|---|---|
| Materiał | Przyrostek - powierzchnia i materiał | Przykład tylko adapter kołnierzowy | Przykład łącznie z kołnierzami połówkowymi, śrubami z gwintem metr. i pierścieniem O-ring | Przykład łącznie z kołnierzami połówkowymi, śrubami z gwintem UNC i pierścieniem O-ring | Standardowy materiał uszczelniający (nie wymaga dodatkowego przyrostka) |
| Stal cynkowana galwanicznie bez chromu Cr(VI) | CF | GFS62/16SCFX | GFS62/16SOMDCF | GFS62/16SOMDCFU | NBR |
| Stal nierdzewna | 71 | GFS62/16S71X | GFS62/16SOMD71 | GFS62/16SOMD71U | VIT |