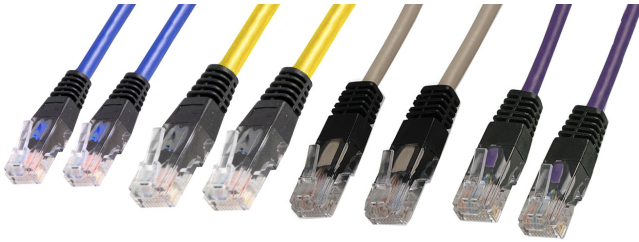


# Cat5E Ethernet Cable

pro-SIGNAL

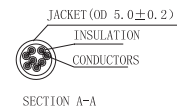
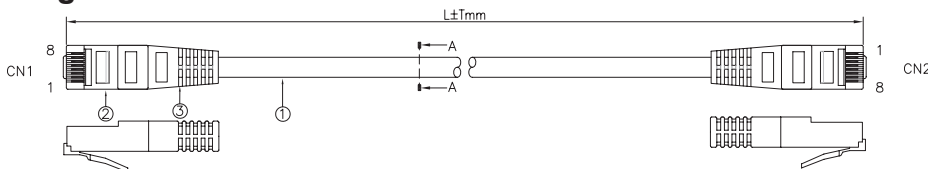
RoHS  
Compliant



## Specifications

Connector to Connector : RJ45 Plug to RJ45 Plug  
LAN Category : Cat5E

## Diagram



PIN OUT		COLOR
CN1 1	CN2 3	WHITE/ORANGE
2	6	ORANGE
3	1	WHITE/GREEN
6	2	GREEN
4	4	BLUE
5	5	WHITE/BLUE
7	7	WHITE/BROWN
8	8	BROWN
		>PAIR

### Note:

#### Material

Cable: 7/0.18CU ±0.008×4pair+PVC Jacket  
Cable Marking RW System Cable UTP Cat5E 4 pairs 24AWG  
Connector: RJ45 (8P8C) Male Cat5E Type  
Insulation: Clear Polyester  
Contacts: Brass, Gold Plated 3U  
Molding: Black PVC

## Part Number Table

Description	Colour	Length	Part Number
Cat5E, RJ45 Plug to RJ45 Plug	Blue	0.5m	PSG90743
	Violet	0.5m	PSG90750
	Yellow	0.5m	PSG90757
	Blue	10m	PSG90748
	Grey	10m	PS11225
	Violet	10m	PSG90755
	Grey	15m	PS11226
	Blue	1m	PSG90744

Newark.com/exclusive-brands  
Farnell.com/exclusive-brands  
Element14.com/exclusive-brands

pro-SIGNAL

# Cat5E Ethernet Cable



Description	Colour	Length	Part Number
Cat5E, RJ45 Plug to RJ45 Plug	Violet	1m	PSG90751
	Yellow	1m	PSG90758
	Blue	20m	PSG90749
	Grey	20m	PS11227
	Yellow	20m	PSG90763
	Grey	25m	PS11228
	Blue	2m	PSG90745
	Violet	2m	PSG90752
	Yellow	2m	PSG90759
	Grey	30m	PS11229
	Blue	3m	PSG90746
	Violet	3m	PSG90753
	Yellow	3m	PSG90760
	Blue	5m	PSG90747
	Violet	5m	PSG90754
	Yellow	5m	PSG90761

**Important Notice :** This data sheet and its contents (the "Information") belong to the members of the AVNET group of companies (the "Group") or are licensed to it. No licence is granted for the use of it other than for information purposes in connection with the products to which it relates. No licence of any intellectual property rights is granted. The Information is subject to change without notice and replaces all data sheets previously supplied. The Information supplied is believed to be accurate but the Group assumes no responsibility for its accuracy or completeness, any error in or omission from it or for any use made of it. Users of this data sheet should check for themselves the Information and the suitability of the products for their purpose and not make any assumptions based on information included or omitted. Liability for loss or damage resulting from any reliance on the Information or use of it (including liability resulting from negligence or where the Group was aware of the possibility of such loss or damage arising) is excluded. This will not operate to limit or restrict the Group's liability for death or personal injury resulting from its negligence. pro-SIGNAL is the registered trademark of Premier Farnell Limited 2019.

Newark.com/exclusive-brands  
Farnell.com/exclusive-brands  
Element14.com/exclusive-brands

