

Collet chucks type ER metal-sealed, according to DIN 6499 A/ISO 15488

Can be used up to 120 bar, concentricity < 5 µm

ATORN[®]

Application

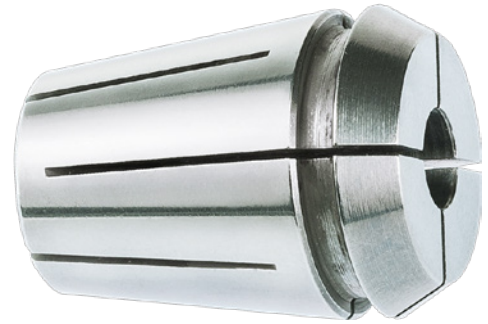
For use on precision collet chucks

Version

- Metal sealed up to 120 bar for internal coolant supply

Advantage

- Higher degree of concentricity extends service life of tool



Art. no.	23388 654
Collet type	ER 16
Clamping diameter	6.5 mm
Outer diameter	17 mm
Length	27.5 mm

EAN-Code

4050293677669