

Ø 2 mm / Ø 4 mm-Adapter

KK-2/4

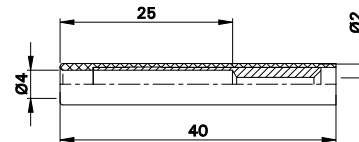
Isolierte Verbindungskupplung aus Messing, bestehend aus starrer Ø 2 mm- und Ø 4 mm-Buchse, passend für gefederte Ø 2 mm- und Ø 4 mm-Stecker.




Ø 2 mm / Ø 4 mm Adapters


KK-2/4

Insulated lead coupler, made of brass, consisting of rigid Ø 2 mm and Ø 4 mm socket, to accept spring-loaded Ø 2 mm and Ø 4 mm plugs.



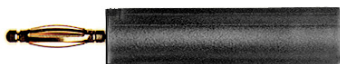
Typ Type	Bestell-Nr. Order No.	Bemessungsspannung/-strom Rated voltage/current	*Farben *Colours
KK-2/4	24.0141-*	30 VAC ~ 60 VDC / 19 A	Au 21 22 23 24

 Beilegezettel **RZ002**
www.multi-contact.com

 RZ Sheet **RZ002**
www.multi-contact.com

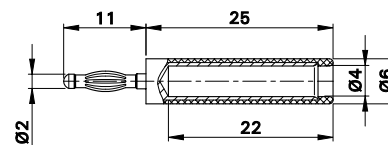
A2/4

Ø 2 mm-Stecker aus Messing mit federnder Kontaktlamelle. Starre Ø 4 mm-Buchse im Isolierkörper, geeignet zur Aufnahme federnder Ø 4 mm-Stecker mit starrer Isolierhülse.





A2/4

Ø 2 mm plug, made of brass, with spring-loaded Multilam. Ø 4 mm rigid socket in insulator accepting spring-loaded Ø 4 mm plugs with rigid insulating sleeve.



Typ Type	Bestell-Nr. Order No.	Bemessungsspannung/-strom Rated voltage/current	*Farben *Colours
A2/4	24.0115-*	30 VAC ~ 60 VDC / 10 A	Au 21 22 23 24

 Beilegezettel **RZ002**
www.multi-contact.com

 RZ Sheet **RZ002**
www.multi-contact.com