

**MATERIAL**

Aluminium, matte finish.  
AISI 304 stainless steel screws and nuts.

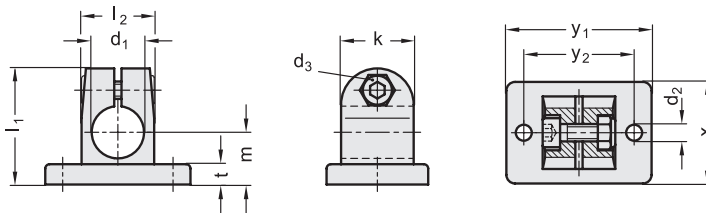
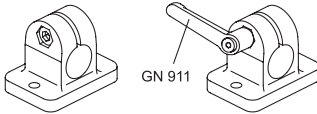
**STANDARD EXECUTIONS**

- **GN 145-BL**: natural aluminium.
- **GN 145-SW**: aluminium, epoxy resin coating, RAL 9005 black colour.

**FEATURES AND APPLICATIONS**

The assembly hole of GN 145 connecting clamps allows an excellent match with tubes GN 990 (see page 1778).

The clamping screws d3 may be replaced by clamping kits GN 911 (see page 1782).

**GN 145-BL**

Code	Description	d1	d2	d3	k	l1	l2	m	t	x	y1	y2	d3 Clamping kit	⚖
GN.45411	GN 145-B10-2-BL	10	5.5	M6	25	40	25	18	7	35	50	38	GN 911-M6-22	71
GN.45431	GN 145-B12-2-BL	12	5.5	M6	25	40	25	18	7	35	50	38	GN 911-M6-22	69
GN.45451	GN 145-B14-2-BL	14	5.5	M6	25	40	25	18	7	35	50	38	GN 911-M6-22	67
GN.45471	GN 145-B15-2-BL	15	5.5	M6	25	40	25	18	7	35	50	38	GN 911-M6-22	67
GN.45491	GN 145-B16-2-BL	16	5.5	M6	25	40	25	18	7	35	50	38	GN 911-M6-22	64
GN.45511	GN 145-B18-2-BL	18	5.5	M6	25	40	25	18	7	35	50	38	GN 911-M6-22	60

**GN 145-SW**

Code	Description	d1	d2	d3	k	l1	l2	m	t	x	y1	y2	d3 Clamping kit	⚖
GN.45416	GN 145-B10-2-SW	10	5.5	M6	25	40	25	18	7	35	50	38	GN 911-M6-22	71
GN.45436	GN 145-B12-2-SW	12	5.5	M6	25	40	25	18	7	35	50	38	GN 911-M6-22	69
GN.45456	GN 145-B14-2-SW	14	5.5	M6	25	40	25	18	7	35	50	38	GN 911-M6-22	67
GN.45476	GN 145-B15-2-SW	15	5.5	M6	25	40	25	18	7	35	50	38	GN 911-M6-22	67
GN.45496	GN 145-B16-2-SW	16	5.5	M6	25	40	25	18	7	35	50	38	GN 911-M6-22	64
GN.45516	GN 145-B18-2-SW	18	5.5	M6	25	40	25	18	7	35	50	38	GN 911-M6-22	60

