

GN 431 | Wing knobs

Stainless steel



MATERIAL

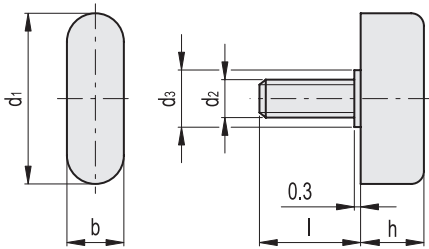
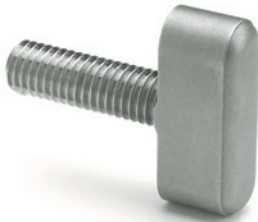
AISI 316 LHC sintered stainless steel, sandblasted matte finish.

STANDARD EXECUTION

AISI 304 stainless steel threaded pin, screwed and set in the body with a lock pin.

FEATURES AND APPLICATIONS

These wing knobs allow high tightening torque values.



Code	Description	d1	d2	d3	b	h	l	⚖
GN.29371	GN 431-25-M6-16	25	M6	8	8	10	16	15
GN.29375	GN 431-25-M6-20	25	M6	8	8	10	20	16
GN.29381	GN 431-25-M6-25	25	M6	8	8	10	25	17
GN.29401	GN 431-30-M8-16	30	M8	10	10	12	16	26
GN.29405	GN 431-30-M8-20	30	M8	10	10	12	20	28
GN.29411	GN 431-30-M8-25	30	M8	10	10	12	25	30
GN.29415	GN 431-30-M8-32	30	M8	10	10	12	32	32
GN.29422	GN 431-36-M10-20	36	M10	12	12	14.5	20	48
GN.29424	GN 431-36-M10-30	36	M10	12	12	14.5	30	53
GN.29426	GN 431-36-M10-40	36	M10	12	12	14.5	40	55

GN 432 | Wing knobs

Stainless steel



MATERIAL

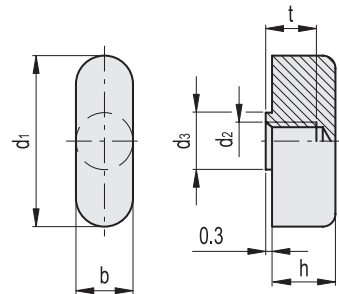
AISI 316 LHC sintered stainless steel, sandblasted matte finish.

STANDARD EXECUTION

Threaded blind hole.

FEATURES AND APPLICATIONS

These wing knobs allow high tightening torque values.



Code	Description	d1	d2	d3	b	h	tmin	⚖
GN.29431	GN 432-25-M6	25	M6	8	8	10	7	11
GN.29441	GN 432-30-M8	30	M8	10	10	12	9	19
GN.29451	GN 432-36-M8	36	M8	12	12	14.5	10	35