



LEVER

Black-oxide steel.

HANDLE

Type PLX. (see page 552) Phenolic based (PF) Duroplast, black colour, glossy finish.

SCREW

Nitrided and black-oxide steel, hexagon socket head.

WASHER

Hardened and black-oxide steel.

CAM

Case-hardened and black-oxide steel.

STANDARD EXECUTIONS

- **GN 918-L:** with eccentric cam with anticlockwise locking action along all the profile.
- **GN 918-R:** with eccentric cam with clockwise locking action along all the profile.
- **GN 918.1-L:** with helical cam with anticlockwise "pull" locking action.
- **GN 918.1-R:** with helical cam with clockwise "pull" locking action.
- **GN 918.2-L:** helical cam with anticlockwise "push" locking action.
- **GN 918.2-R:** helical cam with clockwise "push" locking action.

FEATURES AND APPLICATIONS

GN 918 cam locking levers allow the achievement of strong locking values with safe and fast lock-unlock movements.

The system is self-locking at any angular positioning.

The lever is connected to the cam by means of a toothed element providing precise positioning while releasing the screw.

The washer eliminates the need for expensive items with female threadings and therefore the screw can be used directly on T-nuts for connection plates.



GN 918 L/R

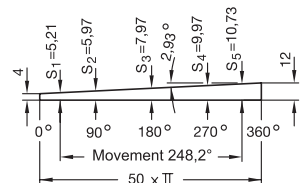
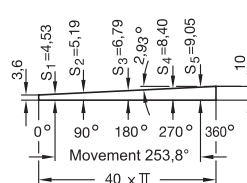
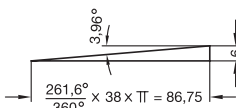
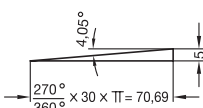
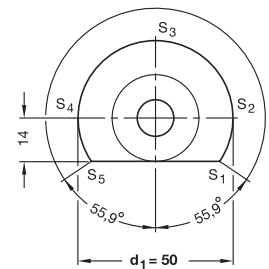
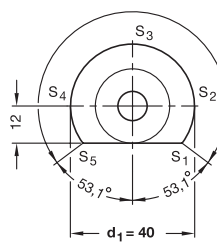
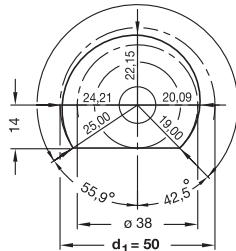
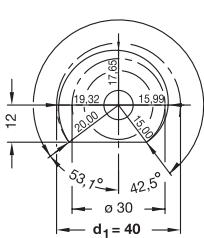
**GN 918.1 L/R
GN 918.2 L/R**

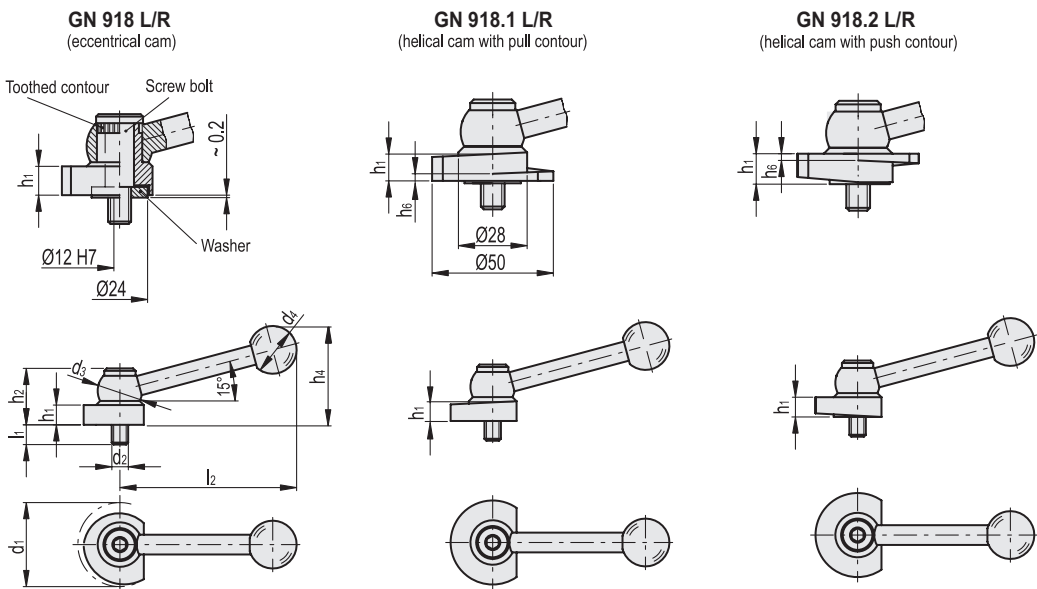
Movement 270°

Movement 261,6°

Movement 253,8°

Movement 248,2°





GN 918

Code	Description	d1-0.5	d2	d3	d4	l1	l2	h1	h2	h4	h6	⚖️
GN.31795	GN 918-40-KV-L	40	M8	24	25	8	100	10	31	55	3.6	180
GN.31800	GN 918-50-KV-L	50	M10	28	30	11	109	12	34.5	62	4	315
GN.31796	GN 918-40-KV-R	40	M8	24	25	8	100	10	31	55	3.6	180
GN.31801	GN 918-50-KV-R	50	M10	28	30	11	109	12	34.5	62	4	315

GN 918.1

Code	Description	d1-0.5	d2	d3	d4	l1	l2	h1	h2	h4	h6	⚖️
GN.31805	GN 918.1-40-KV-L	40	M8	24	25	8	100	10	31	55	3.6	180
GN.31810	GN 918.1-50-KV-L	50	M10	28	30	11	109	12	34.5	62	4	310
GN.31806	GN 918.1-40-KV-R	40	M8	24	25	8	100	10	31	55	3.6	180
GN.31811	GN 918.1-50-KV-R	50	M10	28	30	11	109	12	34.5	62	4	310

GN 918.2

Code	Description	d1-0.5	d2	d3	d4	l1	l2	h1	h2	h4	h6	⚖️
GN.31815	GN 918.2-40-KV-L	40	M8	24	25	8	100	10	31	55	3.6	180
GN.31820	GN 918.2-50-KV-L	50	M10	28	30	11	109	12	34.5	62	4	310
GN.31816	GN 918.2-40-KV-R	40	M8	24	25	8	100	10	31	55	3.6	180
GN.31821	GN 918.2-50-KV-R	50	M10	28	30	11	109	12	34.5	62	4	310

