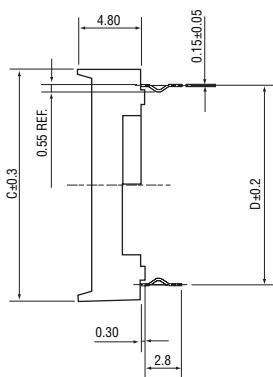
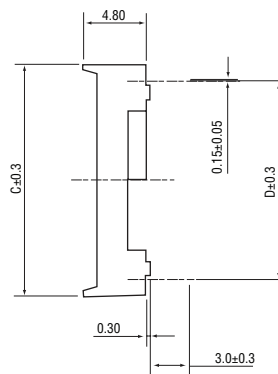
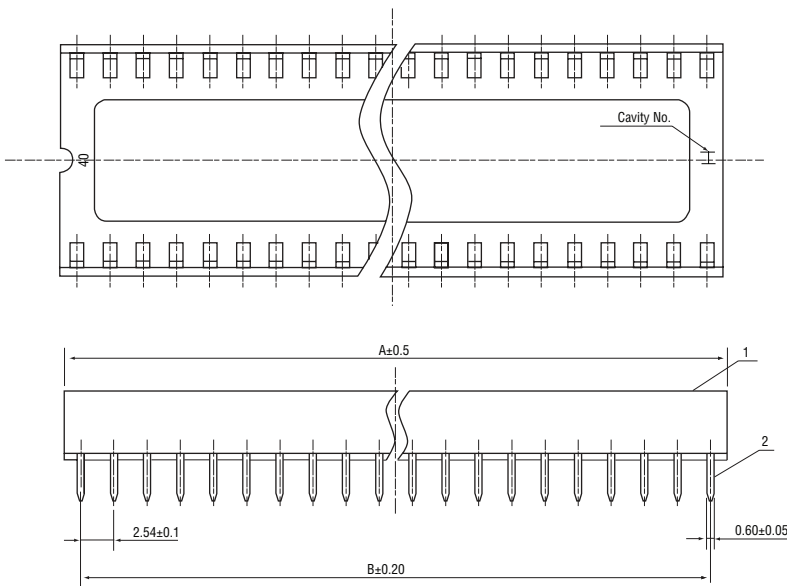


### Notes:

1. Electrical Characteristics:
  - 1.1 Contact resistance: 20mΩ Max.
  - 1.2 Dielectric withstanding voltage: 500V AC(rms) for 1 minute
  - 1.3 Insulation resistance: 1000MΩ Min.
2. Environment characteristics:
  - 2.1 Operating temperature: 0°C to +85°C
  - 2.2 Storage temperature: -20°C to +70°C



Item	Part Name	Materials	Finished
1	Housing	Thermoplastic	UL 94 V - 0
2	Contact	Copper alloy	Tin plated

Order code	Position	Dimensions			
		A	B	C	D
22-0106	06	7.62	5.08	10.16	7.62
22-0107	08	10.16	7.62	10.16	7.62
22-0108	14	17.78	15.24	10.16	7.63
22-0109	16	20.32	17.78	10.16	7.62
22-0110	18	22.86	20.32	10.16	7.62
22-0111	20	25.40	22.86	10.16	7.62
22-0112	24	30.48	27.94	10.16	7.62
22-0113	24	30.48	27.94	17.78	15.24
22-0114	28	35.36	33.02	10.16	7.62
22-0115	28	35.36	33.02	17.78	15.24
22-0116	32	40.64	38.10	17.78	15.24
22-0117	40	50.80	48.26	17.78	15.24