

## CDGW indexable insert ULTRAPOWER PKD positive

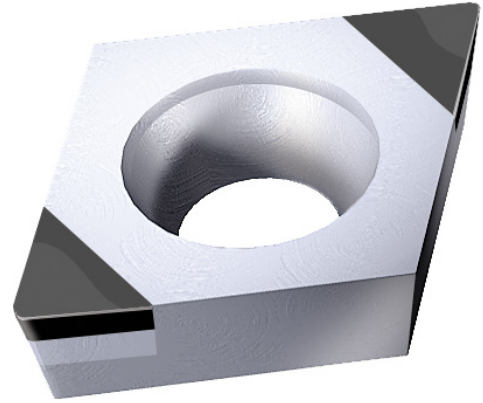
**ATORN**<sup>®</sup>

### Application

For longitudinal turning and facing in the material groups of non-ferrous metals, special alloys, ceramics and hard metals.

### Version

- Lasered ULTRAPOWER PFD indexable insert



<b>Art. no.</b>	<b>17871 482</b>
<b>Shape of indexable insert ISO</b>	C
<b>Clearance angle of indexable insert ISO</b>	D
<b>Tolerance class of indexable insert ISO</b>	G
<b>Indexable insert type ISO</b>	W
<b>Size of indexable insert ISO</b>	04
<b>Thickness of indexable insert ISO</b>	01
<b>Corner radius of indexable insert ISO</b>	02
<b>ISO name</b>	CDGW 040 102
<b>Cutting material</b>	Ultra PCD
<b>Type of cutting material</b>	APC,neutral
<b>ISO-Code Rotating</b>	CDGW 040 102
<b>Design of the chamfer</b>	A (sharp)

### EAN-Code

4050293568165