

GN 162 | Connecting clamp bases

Aluminium



- 1
- 2
- 3
- 4
- 5
- 6
- 7
- 8
- 9
- 10
- 11
- 12
- 13
- 14
- 15
- 16
- 17
- 18

MATERIAL

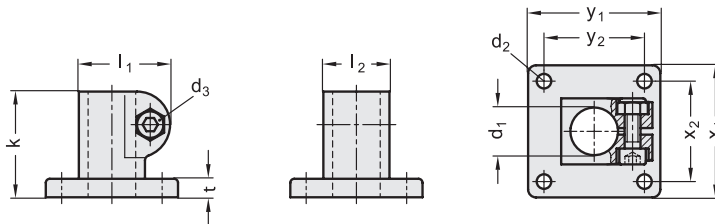
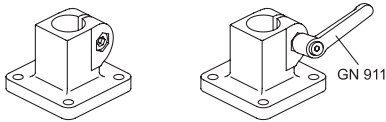
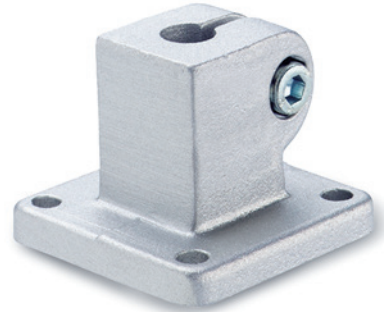
Aluminium, matte finish.
AISI 304 stainless steel screws and nuts.

STANDARD EXECUTIONS

- **GN 162-BL**: natural aluminium.
- **GN 162-SW**: aluminium, epoxy resin coating, RAL 9005 black colour.

FEATURES AND APPLICATIONS

The assembly hole of GN 162 connecting clamps allows an excellent match with tubes GN 990 (see page 1778).
The clamping screws d3 may be replaced by clamping kits GN 911 (see page 1782).



GN 162-BL

| Code | Description | d1 | d2 | d3 | k | l1 | l2 | t | x1 | x2 | y1 | y2 | d3 Clamping kit | △ |
|----------|-----------------|----|-----|----|----|------|----|---|----|----|----|----|--------------------|----|
| GN.48011 | GN 162-B10-2-BL | 10 | 5.5 | M6 | 40 | 34.5 | 25 | 7 | 50 | 38 | 50 | 38 | GN 911-M6-22 | 97 |
| GN.48031 | GN 162-B12-2-BL | 12 | 5.5 | M6 | 40 | 34.5 | 25 | 7 | 50 | 38 | 50 | 38 | GN 911-M6-22 | 93 |
| GN.48051 | GN 162-B14-2-BL | 14 | 5.5 | M6 | 40 | 34.5 | 25 | 7 | 50 | 38 | 50 | 38 | GN 911-M6-22 | 89 |
| GN.48071 | GN 162-B15-2-BL | 15 | 5.5 | M6 | 40 | 34.5 | 25 | 7 | 50 | 38 | 50 | 38 | GN 911-M6-22 | 87 |
| GN.48091 | GN 162-B16-2-BL | 16 | 5.5 | M6 | 40 | 34.5 | 25 | 7 | 50 | 38 | 50 | 38 | GN 911-M6-22 | 85 |
| GN.48111 | GN 162-B18-2-BL | 18 | 5.5 | M6 | 40 | 34.5 | 25 | 7 | 50 | 38 | 50 | 38 | GN 911-M6-22 | 80 |

GN 162-SW

| Code | Description | d1 | d2 | d3 | k | l1 | l2 | t | x1 | x2 | y1 | y2 | d3 Clamping kit | △ |
|----------|-----------------|----|-----|----|----|------|----|---|----|----|----|----|--------------------|----|
| GN.48016 | GN 162-B10-2-SW | 10 | 5.5 | M6 | 40 | 34.5 | 25 | 7 | 50 | 38 | 50 | 38 | GN 911-M6-22 | 97 |
| GN.48036 | GN 162-B12-2-SW | 12 | 5.5 | M6 | 40 | 34.5 | 25 | 7 | 50 | 38 | 50 | 38 | GN 911-M6-22 | 93 |
| GN.48056 | GN 162-B14-2-SW | 14 | 5.5 | M6 | 40 | 34.5 | 25 | 7 | 50 | 38 | 50 | 38 | GN 911-M6-22 | 89 |
| GN.48076 | GN 162-B15-2-SW | 15 | 5.5 | M6 | 40 | 34.5 | 25 | 7 | 50 | 38 | 50 | 38 | GN 911-M6-22 | 87 |
| GN.48096 | GN 162-B16-2-SW | 16 | 5.5 | M6 | 40 | 34.5 | 25 | 7 | 50 | 38 | 50 | 38 | GN 911-M6-22 | 85 |
| GN.48116 | GN 162-B18-2-SW | 18 | 5.5 | M6 | 40 | 34.5 | 25 | 7 | 50 | 38 | 50 | 38 | GN 911-M6-22 | 80 |

Connecting clamps